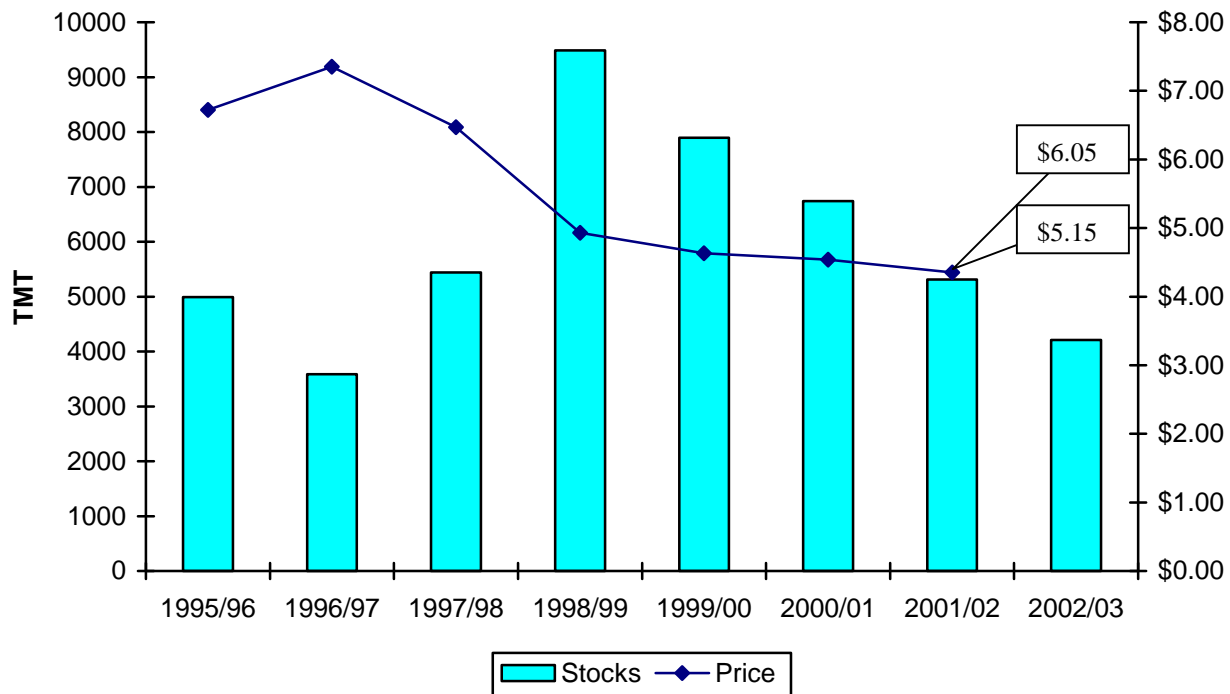




Oilseeds: World Markets and Trade

Lower Soybean Stocks and Higher Prices Projected

U.S. Soybean Ending Stocks and Season Average Price



U.S. soybean production and ending stocks are projected to reach their lowest levels since 1996/97 in 2002/03. The U.S. soybean production estimate for 2002/03 was reduced by 6.3 MMT to 71.5 MMT. The lower production estimate led to a cut in U.S. 2002/03 ending stocks and exports by 2.1 and 3.7 MMT respectively. The lower expected stock levels caused the projected soybean price range to rise by \$1.00 this month to \$5.15 - \$6.05 for 2002/03. World soybean ending stocks, which account for most of oilseed ending stocks, are also expected to reach their lowest level in six years, falling from 30.2 to 22.9 MMT. Record South American soybean beginning stocks, coupled with lower U.S. soybean exports and an increase in Brazilian soybean production for 2002/03 of 1.0 MMT, led to increases this month in expected Brazilian and Argentine soybean exports of 2 and 2.1 MMT respectively. Brazil's projected soybean exports of 22.2 MMT in 2002/03 are now almost equal to projected U.S. exports of 22.3 MMT. Reduced 2002/03 rapeseed and palm oil production projections for August led to higher soybean oil export forecast from the United States and South America, lower oil stocks, and higher expected oil prices.

Situation and Outlook

World oilseed production in 2002/03 is expected to reach only 319.9 million tons, 3.5 million tons lower than in 2001/02, and 8.6 million tons lower than last month's estimate. If realized, this will be the first year-to-year decline in 7 years. Much of the decrease is a result of lower U.S. oilseed production. U.S. soybean production is forecast to decline to 71.5 million tons in 2002/03, down 9 percent from last year, due to weather related yield losses. Dry weather is also expected to reduce yields of rapeseed in Canada and Australia. India's output of soybeans, peanuts, and cottonseed is expected to decline, as the monsoon has not provided sufficient rain in the oilseed growing areas. Brazil's output of soybeans is expected to rise 1 million tons in response to higher soybean prices and a weaker domestic currency. The decline in high oil bearing oilseeds and the weak growth of palm oil production is expected to lead to an even tighter oil market next year, with India and China increasing oil imports by 660 and 625 thousand tons respectively. Oil stocks are expected to drop to 6.6 million tons, 0.5 million tons lower than last month's estimate, and 0.6 million from last year. This will be the lowest level since 1997/1998.

World oilseed trade is forecast to reach 73.1 million tons in 2002/03, a 4-percent increase over 2001/02. The growth in soybean exports, up nearly 7 percent, and sunflowerseed exports, 5 percent higher than last year, more than offset declines in virtually every other oilseed. While U.S. soybean exports are expected to fall 6.5 million tons, South America will increase exports, led by Brazil, Argentina and Paraguay, up 6 million, 3.6 million, and 0.6 million tons respectively. As expected, China will continue to be the largest import market for soybeans at 14 million tons. Other markets showing increases for 2002/03 include the EU, Mexico, and the Middle East/North Africa region. World ending stocks of soybeans are expected to drop 24 percent to 22.9 million tons in 2002/2003 as consumption exceeds production. With the exception of a slight increase for palm kernel, the ending stocks of all oilseeds are forecast to drop a combined 7.8 million tons, which represents a significant 23 percent decline worldwide.

Trade in meal is expected to grow a modest 2.2 percent, led by a 1.4-million-ton increase in soybean meal along with sunflowerseed meal, and fish meal. Because of the greater available supplies, Brazil and Argentina are expected to increase exports of soybean meal by 16 and 9 percent, respectively. Soybean meal exports from the U.S. are forecast to decline by 12 percent to 6.1 million tons in response to tighter soybean supplies and increased competition. World trade in sunflowerseed meal is expected to increase 6 percent to 2.7 million tons; with most of the increased trade coming from Argentina, Eastern Europe and Russia. Fish meal is expected to partially recover next year with exports up 177 thousand tons to 3.4 million tons. Peru's exports of 1.75 million tons dominate the trade, and more than offset minor reductions elsewhere.

World vegetable oil consumption for 2002/03 is forecast to reach 92.7 million tons, which is a modest 1.5 percent rise over the current year. This slowdown in demand growth reflects significantly higher oil prices, due to moderate growth in supply. The net decrease in production of high oil content oilseeds

TABLE 1.
MAJOR OILSEEDS: WORLD SUPPLY AND DISTRIBUTION
(MILLION METRIC TONS)

	1998/99	1999/00	2000/01	PRELIM 2001/02	JULY 2002/03	AUGUST 2002/03
PRODUCTION						
SOYBEAN	159.82	159.90	175.10	183.72	189.42	183.28
COTTONSEED	32.62	32.93	33.53	36.58	33.98	33.77
PEANUT	29.77	28.99	31.12	33.11	33.60	33.30
SUNFLOWERSEED	26.63	27.22	23.29	21.27	22.92	22.95
RAPESEED	35.89	42.47	37.52	36.17	35.70	33.90
COPRA	4.38	5.46	5.90	5.26	5.30	5.30
PALM KERNEL	5.62	6.41	6.91	7.26	7.55	7.41
TOTAL	294.72	303.37	313.37	323.36	328.47	319.91
EXPORTS						
SOYBEAN	38.72	46.68	55.07	57.13	60.44	60.95
COTTONSEED	1.02	1.33	1.39	1.41	1.27	1.30
PEANUT	1.31	1.65	1.39	1.65	1.57	1.59
SUNFLOWERSEED	4.45	3.39	3.48	2.24	2.32	2.35
RAPESEED	9.31	11.17	9.83	7.58	7.61	6.69
COPRA	0.25	0.26	0.19	0.19	0.18	0.18
PALM KERNEL	0.06	0.07	0.08	0.06	0.06	0.06
TOTAL	55.10	64.55	71.43	70.24	73.45	73.11
IMPORTS						
SOYBEAN	40.72	47.97	55.04	57.05	60.96	60.96
COTTONSEED	0.97	1.31	1.30	1.41	1.34	1.29
PEANUT	1.35	1.46	1.38	1.58	1.46	1.48
SUNFLOWERSEED	4.34	3.48	3.20	2.07	2.30	2.30
RAPESEED	9.09	10.97	9.32	7.66	7.58	6.73
COPRA	0.29	0.27	0.19	0.18	0.14	0.14
PALM KERNEL	0.05	0.05	0.05	0.05	0.02	0.02
TOTAL	56.80	65.49	70.47	69.99	73.80	72.92
CRUSH						
SOYBEAN	135.85	136.29	147.09	158.11	163.77	163.67
COTTONSEED	24.98	25.05	24.43	26.53	25.46	24.93
PEANUT	14.79	13.63	14.17	15.72	15.90	15.64
SUNFLOWERSEED	23.01	23.94	20.87	18.87	20.32	20.36
RAPESEED	31.86	37.17	35.20	33.88	33.19	31.94
COPRA	4.44	5.45	5.84	5.19	5.20	5.20
PALM KERNEL	5.58	6.34	6.82	7.18	7.45	7.30
TOTAL	240.50	247.86	254.42	265.47	271.28	269.04
ENDING STOCKS						
SOYBEAN	27.26	27.91	30.80	30.22	29.37	22.90
COTTONSEED	0.50	0.39	0.53	0.52	0.50	0.46
PEANUT	0.79	0.73	0.76	0.87	0.78	0.82
SUNFLOWERSEED	1.42	1.75	0.89	0.53	0.47	0.45
RAPESEED	2.23	4.06	2.40	1.76	1.64	1.46
COPRA	0.04	0.04	0.03	0.03	0.02	0.02
PALM KERNEL	0.13	0.12	0.14	0.15	0.15	0.15
TOTAL	32.38	35.00	35.55	34.06	32.93	26.25

NOTE: TOTALS MAY NOT ADD DUE TO ROUNDING. FOR NOTES AND DESCRIPTION OF AREAS DESIGNATED SEE PAGE FOLLOWING TABLE 8.

SOURCE: COUNSELOR AND ATTACHE REPORTS
OFFICIAL STATISTICS, USDA ESTIMATES
DATE: August 2002

FOREIGN AGRICULTURAL SERVICE
COTTON, OILSEEDS, TOBACCO
and SEEDS DIVISION

TABLE 2.
MAJOR PROTEIN MEALS: WORLD SUPPLY AND DISTRIBUTION
(MILLION METRIC TONS)

	1998/99	1999/00	2000/01	PRELIM 2001/02	JULY 2002/03	AUGUST 2002/03
PRODUCTION						
SOYBEAN	107.65	107.93	116.88	125.16	129.77	129.59
COTTONSEED	11.36	11.45	11.26	12.08	11.59	11.36
RAPESEED	19.09	22.29	21.10	20.29	19.94	19.17
SUNFLOWERSEED	10.51	10.72	9.43	8.49	9.15	9.17
FISH	5.80	6.29	5.66	5.37	5.61	5.61
PEANUT	5.76	5.27	5.52	6.13	6.21	6.10
COPRA	1.44	1.77	1.90	1.68	1.70	1.70
PALM KERNEL	2.93	3.32	3.56	3.75	3.91	3.82
TOTAL	164.55	169.03	175.30	182.95	187.88	186.53
EXPORTS						
SOYBEAN	39.10	39.55	41.07	44.73	46.38	46.13
COTTONSEED	0.60	0.63	0.61	0.74	0.59	0.57
RAPESEED	3.95	4.61	3.97	3.53	3.45	3.35
SUNFLOWERSEED	3.73	3.29	2.79	2.53	2.67	2.69
FISH	3.35	3.96	3.59	3.19	3.36	3.36
PEANUT	0.31	0.32	0.34	0.46	0.42	0.42
COPRA	0.67	0.84	1.21	0.97	0.91	0.95
PALM KERNEL	2.70	2.92	3.24	3.39	3.45	3.36
TOTAL	54.40	56.11	56.82	59.54	61.24	60.83
IMPORTS						
SOYBEAN	38.97	39.48	41.30	44.32	45.74	46.02
COTTONSEED	0.56	0.53	0.59	0.67	0.68	0.68
RAPESEED	3.88	4.33	3.66	3.39	3.46	3.43
SUNFLOWERSEED	3.33	3.17	2.87	2.81	2.93	2.76
FISH	3.21	3.92	3.66	3.39	3.54	3.48
PEANUT	0.29	0.28	0.28	0.27	0.27	0.27
COPRA	0.69	0.89	1.19	1.07	0.95	0.98
PALM KERNEL	2.77	2.69	2.99	3.17	3.13	3.21
TOTAL	53.69	55.28	56.54	59.09	60.71	60.83
CONSUMPTION						
SOYBEAN	106.28	108.72	117.31	124.53	129.18	129.08
COTTONSEED	11.39	11.37	11.25	12.01	11.70	11.48
RAPESEED	19.11	22.05	20.88	20.14	19.92	19.22
SUNFLOWERSEED	10.07	10.59	9.57	8.81	9.42	9.27
FISH	5.66	6.29	6.03	5.60	5.80	5.74
PEANUT	5.75	5.23	5.46	5.95	6.07	5.96
COPRA	1.47	1.79	1.90	1.84	1.73	1.77
PALM KERNEL	2.97	3.04	3.37	3.61	3.58	3.67
TOTAL	162.70	169.07	175.77	182.48	187.38	186.19
ENDING STOCKS						
SOYBEAN	5.08	4.22	4.02	4.23	4.14	4.63
COTTONSEED	0.13	0.11	0.09	0.08	0.07	0.07
RAPESEED	0.36	0.32	0.23	0.24	0.27	0.26
SUNFLOWERSEED	0.31	0.31	0.26	0.23	0.23	0.19
FISH	0.66	0.63	0.32	0.30	0.30	0.29
PEANUT	0.03	0.03	0.02	0.02	0.01	0.01
COPRA	0.16	0.19	0.16	0.11	0.14	0.08
PALM KERNEL	0.24	0.29	0.24	0.16	0.26	0.16
TOTAL	6.96	6.10	5.34	5.36	5.41	5.70

NOTE: TOTALS MAY NOT ADD DUE TO ROUNDING. FOR NOTES AND DESCRIPTION OF AREAS
DESIGNATED SEE PAGE FOLLOWING TABLE 8.

SOURCE: COUNSELOR AND ATTACHE REPORTS
OFFICIAL STATISTICS, USDA ESTIMATES
DATE: August 2002

FOREIGN AGRICULTURAL SERVICE
COTTON, OILSEEDS, TOBACCO
and SEEDS DIVISION

TABLE 3.
MAJOR VEGETABLE OILS: WORLD SUPPLY AND DISTRIBUTION
(MILLION METRIC TONS)

	1998/99	1999/00	2000/01	PRELIM 2001/02	JULY 2002/03	AUGUST 2002/03
PRODUCTION						
SOYBEAN	24.68	24.78	26.86	28.64	29.87	29.86
PALM	19.25	21.80	23.93	24.94	25.96	25.39
SUNFLOWERSEED	9.18	9.63	8.41	7.59	8.13	8.15
RAPESEED	11.81	13.68	12.97	12.47	12.32	11.80
COTTONSEED	3.57	3.57	3.51	3.82	3.65	3.58
PEANUT	4.44	4.15	4.30	4.76	4.81	4.73
COCONUT	2.71	3.34	3.63	3.26	3.23	3.23
OLIVE	2.50	2.37	2.48	2.53	2.34	2.35
PALM KERNEL	2.43	2.75	2.95	3.11	3.21	3.18
TOTAL	80.56	86.06	89.03	91.12	93.51	92.26
EXPORTS						
SOYBEAN	8.17	7.31	7.95	8.99	9.58	9.98
PALM 1/	12.77	14.34	16.80	17.66	17.98	17.79
SUNFLOWERSEED	3.80	3.76	2.97	2.61	2.88	2.86
RAPESEED	2.98	2.97	2.65	2.54	2.50	2.45
COTTONSEED	0.16	0.18	0.17	0.16	0.15	0.15
PEANUT	0.26	0.31	0.31	0.30	0.31	0.31
COCONUT	1.21	2.12	1.85	1.75	1.77	1.75
OLIVE	1.06	1.05	1.15	1.11	1.05	1.05
PALM KERNEL	0.93	0.99	1.16	1.33	1.27	1.35
TOTAL	31.34	33.02	35.02	36.46	37.48	37.68
IMPORTS						
SOYBEAN	7.85	7.10	7.81	8.94	9.45	9.96
PALM 1/	12.23	13.79	16.84	17.27	17.98	17.84
SUNFLOWERSEED	3.56	3.42	3.00	2.60	2.77	2.80
RAPESEED	2.61	2.67	2.59	2.43	2.54	2.46
COTTONSEED	0.19	0.18	0.17	0.15	0.20	0.20
PEANUT	0.27	0.25	0.25	0.24	0.26	0.28
COCONUT	1.35	1.71	2.01	1.73	1.72	1.72
OLIVE	1.04	0.98	1.14	1.11	1.14	1.10
PALM KERNEL	1.01	1.02	1.07	1.16	1.26	1.26
TOTAL	30.10	31.11	34.87	35.63	37.31	37.61
CONSUMPTION						
SOYBEAN	24.54	24.27	26.50	28.76	29.83	30.15
PALM	17.78	20.73	23.90	24.92	25.60	25.23
SUNFLOWERSEED	8.76	9.22	8.62	7.77	8.03	8.11
RAPESEED	11.39	13.26	12.78	12.50	12.40	11.92
COTTONSEED	3.61	3.58	3.49	3.82	3.71	3.64
PEANUT	4.45	4.10	4.24	4.69	4.77	4.71
COCONUT	3.00	2.94	3.63	3.29	3.22	3.24
OLIVE	2.46	2.45	2.57	2.55	2.56	2.53
PALM KERNEL	2.48	2.72	2.68	2.99	3.20	3.14
TOTAL	78.46	83.27	88.39	91.30	93.31	92.68
ENDING STOCKS						
SOYBEAN	2.17	2.47	2.69	2.52	2.52	2.20
PALM	2.57	2.87	2.74	2.18	2.40	2.24
SUNFLOWERSEED	0.75	0.82	0.63	0.45	0.41	0.42
RAPESEED	0.49	0.61	0.73	0.58	0.52	0.47
COTTONSEED	0.06	0.05	0.06	0.05	0.04	0.04
PEANUT	0.04	0.03	0.03	0.03	0.03	0.03
COCONUT	0.17	0.16	0.32	0.26	0.23	0.23
OLIVE	0.98	0.83	0.73	0.70	0.57	0.57
PALM KERNEL	0.23	0.29	0.48	0.44	0.34	0.38
TOTAL	7.46	8.12	8.41	7.21	7.05	6.57

NOTE: TOTALS MAY NOT ADD DUE TO ROUNDING. FOR NOTES AND DESCRIPTION OF AREAS DESIGNATED SEE PAGE FOLLOWING TABLE 8.

1/ PALM OIL TRADE EXCLUDES TRANSSHIPMENTS THROUGH SINGAPORE.

SOURCE: COUNSELOR AND ATTACHE REPORTS
OFFICIAL STATISTICS, USDA ESTIMATES

FOREIGN AGRICULTURAL SERVICE
COTTON, OILSEEDS, TOBACCO
and SEEDS DIVISION

DATE: August 2002

TABLE 4.
MAJOR OILSEEDS: 1/
AREA, YIELD, AND PRODUCTION BY MAIN PRODUCERS

	AVERAGE 1996/97-2000/01			PRELIMINARY 2001/02			FORECAST 2002/03		
	AREA 2/	YIELD 3/	PROD 4/	AREA 2/	YIELD 3/	PROD 4/	AREA 2/	YIELD 3/	PROD 4/
SOYBEAN									
UNITED STATES	28.15	2.56	71.97	29.54	2.66	78.67	29.15	2.45	71.53
BRAZIL	13.05	2.52	32.86	16.35	2.66	43.50	17.50	2.74	48.00
CHINA	8.30	1.75	14.56	9.20	1.68	15.41	9.00	1.73	15.60
ARGENTINA	8.06	2.47	19.94	11.30	2.61	29.50	12.00	2.50	30.00
EUROPEAN UNION	0.41	3.18	1.29	0.39	3.10	1.21	0.32	3.11	0.99
PARAGUAY	1.22	2.50	3.05	1.42	2.18	3.10	1.45	2.55	3.70
OTHER	10.72	1.25	13.36	10.77	1.14	12.33	10.65	1.26	13.46
TOTAL	69.90	2.25	157.02	78.97	2.33	183.72	80.07	2.29	183.28
COTTONSEED									
CHINA	4.29	1.81	7.76	4.82	1.98	9.56	4.10	1.99	8.15
UNITED STATES	5.14	1.14	5.85	5.60	1.21	6.76	5.31	1.17	6.21
FSU-12	2.48	1.15	2.86	2.49	1.23	3.06	2.45	1.25	3.07
INDIA	8.94	0.60	5.34	8.85	0.58	5.10	7.85	0.59	4.60
PAKISTAN	2.97	1.13	3.37	3.13	1.11	3.48	3.13	1.15	3.60
BRAZIL	0.75	1.21	0.91	0.75	1.69	1.27	0.73	1.78	1.30
OTHER	7.45	0.98	7.32	7.35	1.00	7.35	7.18	0.95	6.85
TOTAL	32.02	1.04	33.41	32.99	1.11	36.58	30.75	1.10	33.77
PEANUT									
INDIA	7.84	0.90	7.05	8.20	0.93	7.60	8.30	0.88	7.30
CHINA	4.10	2.87	11.75	4.90	2.94	14.42	5.00	2.95	14.75
UNITED STATES	0.57	2.91	1.66	0.57	3.40	1.94	0.58	3.23	1.87
SENEGAL	0.76	0.91	0.69	0.92	0.98	0.90	0.92	0.98	0.90
SUDAN	0.55	0.67	0.37	0.55	0.67	0.37	0.55	0.67	0.37
BRAZIL	0.10	1.78	0.17	0.10	2.01	0.20	0.10	1.95	0.20
ARGENTINA	0.29	1.43	0.42	0.22	1.51	0.33	0.20	1.58	0.32
SOUTH AFRICA	0.10	1.48	0.15	0.09	1.30	0.12	0.13	1.20	0.15
OTHER	6.97	1.00	6.97	7.12	1.02	7.24	7.19	1.04	7.46
TOTAL	21.28	1.37	29.23	22.67	1.46	33.11	22.96	1.45	33.30
SUNFLOWERSEED									
FSU-12	7.22	0.87	6.25	6.68	0.80	5.34	6.78	0.90	6.09
ARGENTINA	3.10	1.74	5.41	1.98	1.87	3.70	2.30	1.74	4.00
EASTERN EUROPE	2.08	1.28	2.67	1.75	1.28	2.25	1.89	1.34	2.53
UNITED STATES	1.20	1.54	1.85	1.04	1.51	1.58	0.97	1.49	1.44
CHINA	0.93	1.67	1.54	1.00	1.50	1.50	1.15	1.57	1.80
EUROPEAN UNION	2.18	1.64	3.57	1.93	1.56	3.01	1.76	1.67	2.94
OTHER	4.22	0.84	3.55	4.77	0.82	3.89	5.12	0.81	4.16
TOTAL	20.93	1.19	24.84	19.15	1.11	21.27	19.96	1.15	22.95
RAPSEED									
CHINA	6.83	1.42	9.72	7.10	1.59	11.32	7.40	1.42	10.50
EUROPEAN UNION	3.04	3.03	9.20	3.03	2.95	8.91	3.17	3.08	9.76
CANADA	4.83	1.45	7.00	3.89	1.31	5.10	3.70	1.05	3.90
INDIA	6.16	0.83	5.12	5.25	0.86	4.50	5.00	0.82	4.10
EASTERN EUROPE	0.96	2.07	1.99	1.10	2.43	2.68	1.06	2.27	2.41
OTHER	2.86	1.08	3.09	3.16	1.16	3.66	3.06	1.05	3.22
TOTAL	24.68	1.46	36.13	23.52	1.54	36.17	23.40	1.45	33.90
TOTAL OILSEEDS	168.80	1.66	280.62	177.30	1.75	310.85	177.13	1.73	307.20

1/ SPLIT YEAR INCLUDES NORTHERN HEMISPHERE CROPS HARVESTED IN THE LATE MONTHS OF THE FIRST YEAR SHOWN COMBINED WITH SOUTHERN HEMISPHERE AND CERTAIN NORTHERN HEMISPHERE CROPS HARVESTED IN THE EARLY MONTHS OF THE FOLLOWING YEAR.

2/ IN MILLION HECTARES. 3/ IN TONS PER HECTARE. 4/ IN MILLION METRIC TONS.

SOURCE: COUNSELOR AND ATTACHE REPORTS
OFFICIAL STATISTICS, USDA ESTIMATES
DATE: August 2002

FOREIGN AGRICULTURAL SERVICE
COTTON, OILSEEDS, TOBACCO
and SEEDS DIVISION

TABLE 5
SOYBEANS: WORLD SUPPLY AND DISTRIBUTION
(MILLION METRIC TONS)

	1998/99	1999/00	2000/01	PRELIM 2001/02	JULY 2002/03	AUGUST 2002/03
PRODUCTION						
UNITED STATES	74.60	72.22	75.06	78.67	77.84	71.53
BRAZIL	31.30	34.20	39.00	43.50	47.00	48.00
ARGENTINA	20.00	21.20	27.80	29.50	30.00	30.00
CHINA	15.15	14.29	15.40	15.41	15.60	15.60
INDIA	6.00	5.20	5.25	5.40	5.80	5.00
PARAGUAY	3.05	2.90	3.52	3.10	3.70	3.70
OTHER	9.72	9.89	9.07	8.15	9.48	9.45
TOTAL	159.82	159.90	175.10	183.72	189.42	183.28
EXPORTS						
UNITED STATES	21.90	26.54	27.10	28.85	25.99	22.32
BRAZIL	8.93	11.16	15.47	16.20	20.20	22.20
ARGENTINA	3.23	4.13	7.42	7.00	8.50	10.60
PARAGUAY	2.35	2.12	2.55	2.11	2.70	2.70
OTHER	2.30	2.73	2.54	2.97	3.04	3.13
TOTAL	38.72	46.68	55.07	57.13	60.44	60.95
IMPORTS						
EUROPEAN UNION	16.79	15.66	18.92	20.34	20.86	20.86
GERMANY	4.10	3.44	4.57	4.70	4.75	4.75
NETHERLANDS	5.01	5.26	5.66	6.20	6.20	6.20
SPAIN	3.05	2.74	3.17	3.40	3.45	3.45
ITALY	0.72	0.80	0.84	0.82	1.00	1.00
BEL-LUX	1.24	1.20	1.43	1.69	1.63	1.63
PORTUGAL	0.64	0.62	0.90	1.05	1.22	1.22
EASTERN EUROPE	0.14	0.06	0.16	0.23	0.23	0.23
FSU-12	0.33	0.10	0.08	0.24	0.17	0.26
ASIA	15.18	22.43	25.54	24.01	27.53	27.73
CHINA	3.85	10.10	13.25	10.50	14.00	14.00
JAPAN	4.81	4.91	4.77	5.00	4.90	4.90
KOREA, REP OF	1.40	1.61	1.39	1.45	1.50	1.50
TAIWAN	2.15	2.30	2.33	2.40	2.40	2.40
INDONESIA	1.13	1.42	1.26	1.58	1.65	1.65
MID-EAST/N AFR	1.56	1.86	2.35	2.96	3.08	3.08
LATIN AMERICA	5.86	6.65	6.91	7.62	7.69	7.69
MEXICO	3.76	3.95	4.37	4.90	5.10	5.10
BRAZIL	0.60	1.00	0.90	0.90	0.90	0.90
OTHER	0.86	1.20	1.08	1.66	1.10	1.12
TOTAL	40.72	47.97	55.04	57.05	60.64	60.96
CRUSH						
UNITED STATES	43.26	42.94	44.65	46.40	46.68	45.72
LATIN AMERICA	44.59	44.89	47.05	51.99	55.61	56.91
BRAZIL	21.01	21.20	22.62	24.00	26.00	27.00
ARGENTINA	17.51	17.08	17.30	20.20	21.50	21.75
MEXICO	3.95	4.10	4.45	4.95	5.15	5.20
EUROPEAN UNION	16.24	14.43	16.75	17.87	18.36	18.36
FSU-12	0.51	0.41	0.48	0.61	0.58	0.66
EASTERN EUROPE	0.41	0.45	0.38	0.53	0.57	0.57
ASIA	26.89	28.80	33.16	35.50	36.61	36.10
JAPAN	3.70	3.75	3.78	3.89	3.83	3.83
CHINA	12.61	15.07	18.90	20.51	21.25	21.25
TAIWAN	1.90	1.99	2.13	2.15	2.13	2.13
INDIA	5.40	4.40	4.53	4.63	4.95	4.27
OTHER	3.95	4.38	4.63	5.21	5.36	5.36
TOTAL	135.85	136.29	147.09	158.11	163.77	163.67
ENDING STOCKS						
UNITED STATES	9.48	7.90	6.74	5.31	6.27	4.21
BRAZIL	7.51	8.64	8.38	10.40	10.02	7.77
ARGENTINA	6.03	5.52	7.93	9.44	7.82	6.02
OTHER	4.24	5.85	7.75	5.06	5.26	4.90
TOTAL	27.26	27.91	30.80	30.22	29.37	22.90
U.S. SEASON AVG. PRICE (\$/bu)	4.93	4.63	4.54	4.30	4.15 - 5.05	5.15 - 6.05

NOTE: TOTALS MAY NOT ADD DUE TO ROUNDING. FOR NOTES AND DESCRIPTION OF PRICES AND AREAS DESIGNATED SEE PAGE FOLLOWING TABLE 8.

1/ BRAZIL AND ARGENTINA ESTIMATES HAVE BEEN ADJUSTED TO A CONSISTANT OCT-SEPT YEAR; ESTIMATES OF OTHER COUNTRIES (INCLUDING THE U.S.) ARE ON A LOCAL MARKETING YEAR.

SOURCE: COUNSELOR AND ATTACHE REPORTS
OFFICIAL STATISTICS, USDA ESTIMATES
DATE: August 2002

FOREIGN AGRICULTURAL SERVICE
COTTON, OILSEEDS, TOBACCO
and SEEDS DIVISION

TABLE 6
SOYBEAN MEAL: WORLD SUPPLY AND DISTRIBUTION
(MILLION METRIC TONS)

	1998/99	1999/00	2000/01	PRELIM 2001/02	JULY 2002/03	AUGUST 2002/03
PRODUCTION						
UNITED STATES	34.29	34.10	35.73	36.79	37.07	36.27
LATIN AMERICA	35.26	35.42	37.17	40.93	43.85	44.83
BRAZIL	16.60	16.75	17.96	18.96	20.54	21.33
ARGENTINA	13.85	13.45	13.65	15.91	16.99	17.14
MEXICO	3.15	3.25	3.53	3.92	4.09	4.12
EUROPEAN UNION	12.92	11.47	13.24	14.14	14.54	14.54
EASTERN EUROPE	0.37	0.35	0.29	0.40	0.43	0.43
FSU-12	0.40	0.33	0.38	0.48	0.47	0.52
ASIA	21.28	22.81	26.38	28.26	29.14	28.74
JAPAN	2.87	2.91	2.93	3.01	2.97	2.97
CHINA	10.02	11.98	15.30	16.60	17.20	17.20
TAIWAN	1.51	1.58	1.53	1.54	1.53	1.53
INDIA	4.30	3.52	3.61	3.70	3.94	3.40
OTHER	3.14	3.45	3.68	4.16	4.28	4.28
TOTAL	107.65	107.93	116.88	125.16	129.77	129.59
EXPORTS						
UNITED STATES	6.46	6.65	6.99	6.94	6.76	6.12
BRAZIL	9.83	9.93	10.68	11.20	12.23	12.95
ARGENTINA	13.40	13.75	13.60	15.48	16.76	16.81
EUROPEAN UNION	5.39	5.34	5.94	6.17	6.13	6.13
INDIA	2.80	2.38	2.35	2.50	2.55	2.00
OTHER	1.22	1.50	1.52	2.44	1.96	2.11
TOTAL	39.10	39.55	41.07	44.73	46.38	46.13
IMPORTS						
EUROPEAN UNION	19.93	19.81	20.16	20.90	21.10	21.10
FRANCE	4.11	4.15	4.42	4.60	4.70	4.70
GERMANY	2.06	1.93	2.11	1.84	1.85	1.85
NETHERLANDS	2.38	2.66	2.72	2.75	2.80	2.80
ITALY	2.15	2.20	2.63	3.00	3.00	3.00
EASTERN EUROPE	2.47	2.58	3.15	3.31	3.66	3.66
FSU-12	0.43	0.49	0.26	0.40	0.42	0.42
ASIA & OCEANIA	7.43	7.18	7.60	8.64	8.94	8.99
CHINA	1.40	0.63	0.10	0.06	0.15	0.15
PHILLIPINES	0.86	0.95	1.04	1.20	1.15	1.15
MID-EAST/N AFR	3.70	4.14	4.51	4.78	5.21	5.21
EGYPT	0.80	0.92	1.05	1.15	1.30	1.30
LATIN AMERICA	3.65	3.88	3.97	4.24	4.41	4.51
OTHER	1.34	1.41	1.66	2.05	2.01	2.13
TOTAL	38.97	39.48	41.30	44.32	45.74	46.02
CONSUMPTION						
UNITED STATES	27.81	27.53	28.71	30.12	30.39	30.34
LATIN AMERICA	14.27	15.31	16.03	17.16	18.13	18.00
BRAZIL	6.65	7.20	7.55	7.92	8.50	8.25
ARGENTINA	0.20	0.21	0.22	0.23	0.23	0.23
MEXICO	3.30	3.54	3.79	4.30	4.48	4.60
EUROPEAN UNION	27.27	25.97	27.58	28.80	29.52	29.52
FRANCE	4.43	4.38	4.75	5.12	5.23	5.23
GERMANY	4.17	3.60	4.18	4.20	4.27	4.27
NETHERLANDS	2.99	3.17	3.51	3.56	3.87	3.87
ITALY	3.38	3.22	3.51	3.86	3.91	3.91
SPAIN	4.67	4.38	4.43	4.68	4.77	4.77
FSU-12	0.76	0.84	0.69	0.87	0.89	0.93
EASTERN EUROPE	2.88	2.92	3.33	3.75	4.13	4.13
POLAND	0.85	0.89	1.10	1.36	1.60	1.60
ASIA & OCEANIA	25.56	27.51	31.54	33.45	35.16	35.19
JAPAN	3.65	3.66	3.56	4.04	4.06	4.06
CHINA	11.42	12.58	15.29	15.76	17.00	16.85
TAIWAN	1.55	1.67	1.56	1.58	1.60	1.60
KOREA, REP OF	1.98	2.09	2.29	2.46	2.58	2.58
MID-EAST/N AFR	4.90	5.57	6.05	6.84	7.32	7.32
OTHER	2.83	3.08	3.39	3.54	3.64	3.64
TOTAL	106.28	108.72	117.31	124.53	129.18	129.08
ENDING STOCKS						
UNITED STATES	0.30	0.27	0.35	0.25	0.23	0.23
BRAZIL	1.19	0.90	0.82	0.90	0.91	1.23
ARGENTINA	0.78	0.27	0.10	0.30	0.30	0.40
OTHER	2.81	2.79	2.75	2.78	2.70	2.77
TOTAL	5.08	4.22	4.02	4.23	4.14	4.63
U.S. SEASON AVG.PRICE (\$/s.t)	138.5	167.70	173.60	165.00	150.0 - 180.0	170.0 - 200.0

NOTE: TABLES MAY NOT ADD DUE TO ROUNDING. FOR NOTES AND DESCRIPTION OF PRICES AND AREAS DESIGNATED SEE PAGE FOLLOWING TABLE 8.

SOURCE: COUNSELOR AND ATTACHE REPORTS,
OFFICIAL STATISTICS, USDA ESTIMATES
DATE: August 2002

FOREIGN AGRICULTURAL SERVICE
COTTON, OILSEEDS, TOBACCO
and SEEDS DIVISION

TABLE 7
SOYBEAN OIL: WORLD SUPPLY AND DISTRIBUTION
(MILLION METRIC TONS)

	1998/99	1999/00	2000/01	PRELIM 2001/02	JULY 2002/03	AUGUST 2002/03
PRODUCTION						
UNITED STATES	8.20	8.09	8.36	8.58	8.72	8.61
LATIN AMERICA	8.15	8.30	8.76	9.58	10.37	10.55
BRAZIL	3.93	4.03	4.34	4.55	4.99	5.15
ARGENTINA	3.16	3.13	3.19	3.70	3.99	4.00
MEXICO	0.67	0.70	0.76	0.85	0.88	0.89
EUROPEAN UNION	2.92	2.60	3.04	3.22	3.31	3.31
FSU-12	0.07	0.07	0.07	0.09	0.09	0.10
EASTERN EUROPE	0.07	0.08	0.07	0.09	0.10	0.10
ASIA	4.58	4.91	5.76	6.17	6.36	6.27
JAPAN	0.67	0.67	0.67	0.69	0.68	0.68
CHINA	2.05	2.48	3.24	3.52	3.64	3.64
TAIWAN	0.31	0.33	0.35	0.35	0.35	0.35
INDIA	0.97	0.79	0.82	0.84	0.89	0.77
OTHER	0.68	0.75	0.81	0.91	0.92	0.92
TOTAL	24.68	24.78	26.86	28.64	29.87	29.86
EXPORTS						
UNITED STATES	1.08	0.62	0.64	1.09	0.98	1.13
BRAZIL	1.38	1.20	1.53	1.68	1.94	0.00
ARGENTINA	3.14	3.04	3.21	3.58	3.88	0.00
EUROPEAN UNION	1.71	1.69	1.81	1.90	1.99	1.99
OTHER	0.87	0.76	0.76	0.75	0.80	6.86
TOTAL	8.17	7.31	7.95	8.99	9.58	9.98
IMPORTS						
UNITED STATES	0.04	0.04	0.03	0.02	0.03	0.03
EUROPEAN UNION	0.68	0.58	0.62	0.61	0.59	0.59
FSU-12	0.20	0.23	0.32	0.42	0.46	0.46
EASTERN EUROPE	0.15	0.13	0.18	0.22	0.19	0.19
ASIA	3.47	2.71	2.88	3.54	3.89	4.39
CHINA	0.95	0.56	0.08	0.38	0.50	0.80
INDIA	0.83	0.79	1.40	1.65	1.80	2.00
PAKISTAN	0.41	0.23	0.18	0.23	0.25	0.25
MID-EAST/N AFR	1.78	1.74	1.98	2.17	2.29	2.29
IRAN	0.96	0.76	0.92	0.93	0.96	0.96
MOROCCO	0.23	0.26	0.29	0.29	0.30	0.30
TURKEY	0.13	0.14	0.11	0.16	0.20	0.20
TUNISIA	0.14	0.15	0.16	0.18	0.18	0.18
LATIN AMERICA	1.26	1.33	1.33	1.43	1.48	1.49
BRAZIL	0.21	0.22	0.21	0.20	0.20	0.20
MEXICO	0.11	0.12	0.08	0.13	0.14	0.16
CHILE	0.08	0.09	0.09	0.09	0.09	0.09
PERU	0.11	0.12	0.20	0.21	0.21	0.21
COLOMBIA	0.12	0.12	0.14	0.15	0.15	0.15
OTHER	0.29	0.35	0.48	0.54	0.53	0.53
TOTAL	7.85	7.10	7.81	8.94	9.45	9.96
CONSUMPTION						
UNITED STATES	7.10	7.28	7.36	7.62	7.85	7.80
LATIN AMERICA	4.86	5.13	5.34	5.63	5.83	5.83
BRAZIL	2.85	3.00	3.12	3.18	3.28	3.25
ARGENTINA	0.11	0.11	0.11	0.12	0.12	0.12
MEXICO	0.77	0.79	0.83	0.97	1.01	1.04
EUROPEAN UNION	1.88	1.50	1.80	1.87	1.93	1.93
FSU-12	0.27	0.29	0.36	0.52	0.54	0.54
EASTERN EUROPE	0.21	0.20	0.23	0.30	0.29	0.29
ASIA	7.78	7.23	8.32	9.39	9.83	10.20
JAPAN	0.68	0.68	0.68	0.69	0.68	0.68
CHINA	3.08	2.87	3.27	3.87	3.99	4.29
TAIWAN	0.37	0.36	0.37	0.41	0.43	0.43
KOREA, REP OF	0.33	0.34	0.37	0.38	0.38	0.38
INDIA	1.81	1.58	2.22	2.49	2.69	2.77
PAKISTAN	0.41	0.24	0.21	0.28	0.28	0.32
BANGLADESH	0.47	0.48	0.50	0.51	0.54	0.54
MID-EAST/N AFR	1.79	1.93	2.22	2.50	2.63	2.63
IRAN	0.81	0.80	0.95	0.98	1.01	1.01
MOROCCO	0.27	0.29	0.34	0.34	0.35	0.35
TURKEY	0.14	0.15	0.12	0.18	0.22	0.22
OTHER	0.65	0.71	0.87	0.92	0.93	0.93
TOTAL	24.54	24.27	26.50	28.76	29.83	30.15
ENDING STOCKS						
UNITED STATES	0.69	0.91	1.31	1.20	1.17	0.90
BRAZIL	0.32	0.36	0.26	0.15	0.18	0.13
ARGENTINA	0.25	0.23	0.10	0.10	0.09	0.09
OTHER	0.92	0.97	1.03	1.07	1.08	1.08
TOTAL	2.17	2.47	2.69	2.52	2.52	2.20
U.S. SEASON AVG.PRICE (c/lb)	19.90	15.60	14.15	15.50	15.25 - 18.25	18.50 - 21.50

NOTE: TABLES MAY NOT ADD DUE TO ROUNDING. FOR NOTES AND DESCRIPTION OF PRICES AND AREAS DESIGNATED SEE PAGE FOLLOWING TABLE 8.

SOURCE: COUNSELOR AND ATTACHE REPORTS,
OFFICIAL STATISTICS, USDA ESTIMATES
DATE: August 2002

FOREIGN AGRICULTURAL SERVICE
COTTON, OILSEEDS, TOBACCO
and SEEDS DIVISION

TABLE 8
SOYBEANS AND PRODUCTS: WORLD TRADE
(1000 METRIC TONS)

EXPORTERS	MARKETING YEAR	SOYBEANS			SOYBEAN MEAL			SOYBEAN OIL		
		2000/01	2001/02	2002/03	2000/01	2001/02	2002/03	2000/01	2001/02	2002/03
UNITED STATES 1/	(OCT-SEP)	27,103	28,849	22,317	6,988	6,940	6,124	636	1,089	1,134
BRAZIL	(OCT-SEP)	15,470	16,200	22,200	10,679	11,200	12,950	1,530	1,680	2,130
ARGENTINA	(OCT-SEP)	7,415	7,000	10,600	13,600	15,481	16,810	3,211	3,577	3,890
EUROPEAN UNION	(OCT-SEP)	1,258	1,805	1,596	5,935	6,171	6,132	1,808	1,895	1,985
INDIA	(OCT-SEP)	0	0	0	2,350	2,500	2,000	0	0	0
PARAGUAY	(OCT-SEP)	2,550	2,110	2,700	520	515	530	115	105	106
OTHER	2/	1,278	1,163	1,533	1,000	1,924	1,581	648	647	730
WORLD TOTAL	2/	55,074	57,127	60,946	41,072	44,731	46,127	7,948	8,993	9,975
SELECTED IMPORTERS										
EUROPEAN UNION	(OCT-SEP)	18,915	20,337	20,858	20,156	20,901	21,100	615	611	592
GERMANY	(OCT-SEP)	4,567	4,700	4,750	2,110	1,840	1,850	56	70	70
NETHERLANDS	(OCT-SEP)	5,660	6,200	6,200	2,720	2,750	2,800	83	75	60
SPAIN	(OCT-SEP)	3,167	3,400	3,450	2,217	2,500	2,500	23	15	20
ITALY	(OCT-SEP)	836	820	1,000	2,632	3,000	3,000	22	30	25
BEL-LUX	(OCT-SEP)	1,429	1,685	1,630	1,413	1,450	1,540	242	245	245
PORTUGAL	(OCT-SEP)	903	1,050	1,220	280	270	200	6	2	2
FRANCE	(OCT-SEP)	899	910	950	4,416	4,600	4,695	59	50	50
U.K.	(OCT-SEP)	865	1,000	1,050	1,260	1,400	1,400	29	27	27
DENMARK	(OCT-SEP)	107	96	100	1,545	1,526	1,550	28	32	30
FSU-12	(OCT-SEP)	84	235	260	259	402	422	315	420	455
RUSSIA	(OCT-SEP)	20	100	150	165	250	265	315	420	455
UKRAINE	(OCT-SEP)	10	10	10	40	60	65	0	0	0
EASTERN EUROPE	(OCT-SEP)	164	225	225	3,145	3,306	3,662	183	215	190
POLAND	(OCT-SEP)	12	15	15	1,215	1,300	1,550	130	130	115
HUNGARY	(OCT-SEP)	5	5	5	770	810	875	5	20	10
ASIA	2/	25,535	24,011	27,725	7,286	8,224	8,565	2,876	3,539	4,386
CHINA	(OCT-SEP)	13,245	10,500	14,000	100	60	150	197	200	205
JAPAN	(OCT-SEP)	4,767	5,000	4,900	610	1,050	1,100	2	2	2
TAIWAN	(OCT-SEP)	2,330	2,400	2,400	35	50	75	12	50	75
KOREA, REP OF	(NOV-OCT)	1,389	1,450	1,500	1,414	1,550	1,650	166	175	170
INDONESIA	(OCT-SEP)	1,261	1,575	1,650	1,550	1,600	1,650	15	15	15
THAILAND	(OCT-SEP)	1,290	1,560	1,600	1,408	1,480	1,500	0	0	0
MALAYSIA	(OCT-SEP)	609	725	750	507	640	650	135	135	140
PHILIPPINES	(JAN-DEC)	365	375	400	1,039	1,200	1,150	9	10	10
INDIA	(OCT-SEP)	0	0	0	0	0	0	1,400	1,650	2,000
PAKISTAN	(OCT-SEP)	162	300	400	90	0	50	175	225	250
MID-EAST/N AFR	2/	2,352	2,963	3,078	4,509	4,783	5,207	1,979	2,166	2,289
ISRAEL	(OCT-SEP)	617	730	770	58	59	65	9	12	14
IRAN	(OCT-SEP)	630	803	803	450	477	550	920	932	961
EGYPT	(OCT-SEP)	334	575	600	1,050	1,145	1,300	320	350	364
MOROCCO	(OCT-SEP)	257	280	290	30	70	80	292	290	300
TUNISIA	(OCT-SEP)	0	0	0	275	290	320	160	175	175
ALGERIA	(JAN-DEC)	0	0	0	360	380	400	40	90	90
TURKEY	(NOV-OCT)	382	460	500	508	480	500	107	160	200
OTHER AFRICA	2/	101	112	112	508	547	611	347	404	421
SOUTH AFRICA	(JUN-JUL)	100	111	111	467	495	550	119	150	165
LATIN AMERICA	2/	6,907	7,618	7,691	3,970	4,236	4,513	1,333	1,427	1,491
MEXICO	(SEP-AUG)	4,374	4,900	5,100	246	380	500	83	130	155
VENEZUELA	(OCT-SEP)	209	220	235	664	600	660	197	200	205
CANADA	(AUG-JUL)	431	1,000	400	915	1,100	1,100	78	80	50
OTHER	2/	548	545	611	550	817	836	85	74	84
WORLD TOTAL	2/	55,037	57,046	60,960	41,298	44,316	46,016	7,811	8,936	9,958

NOTE: SEE FOLLOWING PAGE FOR COUNTRIES INCLUDED IN REGIONAL AREAS.

1/ SEP-AUG FOR SOYBEANS.

2/ AN AGGREGATE OF INDIVIDUAL MARKETING YEARS.

SOURCE: COUNSELOR AND ATTACHE REPORTS, OFFICIAL STATISTICS, USDA ESTIMATES

DATE: August 2002

FOREIGN AGRICULTURAL SERVICE
COTTON, OILSEEDS, TOBACCO
and SEEDS DIVISION

TABLE 9
VEGETABLE OIL PRODUCTION, CONSUMPTION AND IMPORTS
FOR SELECTED COUNTRIES, 1,000 METRIC TONS

		IMPORT MARKETING YEAR	1997/98	1998/99	1999/00	2000/01	PRELIM 2001/02	FORECAST 2002/03
INDIA	TOTAL PRODUCTION	MY	5,648	5,364	4,865	4,711	5,287	5,038
	TOTAL CONSUMPTION	MY	7,674	9,243	9,899	10,646	10,708	10,889
	TOTAL IMPORTS	MY	1,986	4,579	4,894	6,025	5,221	5,890
	PALM OIL	(OCT-SEP)	1,530	2,900	3,300	4,000	3,400	3,700
	SOYBEAN OIL	(OCT-SEP)	236	833	790	1,400	1,650	2,000
	SUNFLOWERSEED OIL	(OCT-SEP)	125	550	570	455	50	60
FSU-12	TOTAL PRODUCTION	MY	1,727	1,823	2,719	2,819	2,531	2,707
	TOTAL CONSUMPTION	MY	2,387	2,399	2,856	3,024	3,185	3,207
	TOTAL IMPORTS	MY	837	820	857	947	1,124	1,117
	PALM OIL	(OCT-SEP)	70	80	125	225	300	250
	SUNFLOWERSEED OIL	(SEP-AUG)	397	386	357	345	351	361
	SOYBEAN OIL	(OCT-SEP)	125	202	227	315	420	455
PAKISTAN	TOTAL PRODUCTION	MY	410	463	632	532	536	520
	TOTAL CONSUMPTION	MY	1,710	1,939	1,880	1,757	1,952	1,982
	TOTAL IMPORTS	MY	1,305	1,409	1,284	1,259	1,385	1,452
	PALM OIL	(OCT-SEP)	1,124	981	1,039	1,054	1,150	1,200
	SOYBEAN OIL	(OCT-SEP)	163	407	225	175	225	250
EGYPT	TOTAL PRODUCTION	MY	106	93	96	99	146	158
	TOTAL CONSUMPTION	MY	922	979	1,040	1,092	1,122	1,174
	TOTAL IMPORTS	MY	816	896	944	983	976	1,016
	SUNFLOWERSEED OIL	(OCT-SEP)	240	260	200	110	75	83
	COTTONSEED OIL	(OCT-SEP)	11	6	11	8	6	8
	PALM OIL	(OCT-SEP)	400	450	455	545	545	561
	SOYBEAN OIL	(OCT-SEP)	165	180	278	320	350	364
IRAN	TOTAL PRODUCTION	MY	51	112	149	168	191	191
	TOTAL CONSUMPTION	MY	941	1,137	1,174	1,265	1,315	1,350
	TOTAL IMPORTS	MY	1,000	1,240	1,100	1,200	1,236	1,271
	PALM OIL	(OCT-SEP)	100	105	140	170	224	230
	SOYBEAN OIL	(OCT-SEP)	700	960	760	920	932	961
	SUNFLOWERSEED OIL	(OCT-SEP)	200	175	200	110	80	80
ALGERIA	TOTAL PRODUCTION	MY	10	40	35	30	45	45
	TOTAL CONSUMPTION	MY	360	342	354	409	419	428
	TOTAL IMPORTS	MY	342	320	314	370	378	378
	SUNFLOWERSEED OIL	(JAN-DEC)	240	250	225	230	186	186
	RAPESEED OIL	(JAN-DEC)	15	47	33	25	2	2
MOROCCO	TOTAL PRODUCTION	MY	168	164	124	115	127	126
	TOTAL CONSUMPTION	MY	384	413	432	424	434	442
	TOTAL IMPORTS	MY	226	261	301	313	311	321
	SOYBEAN OIL	(OCT-SEP)	120	230	260	292	290	300
	RAPESEED OIL	(OCT-SEP)	30	10	10	5	5	5
NIGERIA	TOTAL PRODUCTION	MY	988	1,131	1,160	1,131	1,179	1,209
	TOTAL CONSUMPTION	MY	1,075	1,236	1,295	1,346	1,429	1,460
	TOTAL IMPORTS	MY	120	140	180	250	270	281
	PALM OIL	(OCT-SEP)	120	140	180	250	270	280
VENEZUELA	TOTAL PRODUCTION	MY	122	142	140	123	126	132
	TOTAL CONSUMPTION	MY	335	459	457	361	357	370
	TOTAL IMPORTS	MY	217	318	316	233	230	238
	SUNFLOWERSEED OIL	(OCT-SEP)	60	36	23	22	16	19
	SOYBEAN OIL	(OCT-SEP)	150	270	280	197	200	205
CHINA	TOTAL PRODUCTION	MY	7,069	8,311	9,799	10,645	10,658	10,487
	TOTAL CONSUMPTION	MY	10,336	10,785	11,528	12,473	13,288	13,662
	TOTAL IMPORTS	MY	3,437	2,458	1,911	1,968	2,685	3,360
	PALM OIL	(OCT-SEP)	1,300	1,275	1,200	1,579	2,000	2,200
	SOYBEAN OIL	(OCT-SEP)	1,650	950	556	80	375	800
	RAPESEED OIL	(OCT-SEP)	400	175	40	85	40	40
BANGLADESH	TOTAL PRODUCTION	MY	138	143	182	154	146	122
	TOTAL CONSUMPTION	MY	563	714	850	1,018	1,035	1,042
	TOTAL IMPORTS	MY	420	587	683	884	888	922
	SOYBEAN OIL	(OCT-SEP)	260	510	481	503	511	540
	PALM OIL	(OCT-SEP)	130	50	172	350	340	350
TOTAL OF SELECTED IMPORTERS	TOTAL PRODUCTION	MY	16,437	17,786	19,901	20,527	20,972	20,735
	TOTAL CONSUMPTION	MY	26,687	29,646	31,765	33,815	35,244	36,006
	TOTAL IMPORTS	MY	10,706	13,028	12,784	14,432	14,704	16,246
	PALM OIL	MY	4,803	6,011	6,667	8,262	8,343	8,885
	RAPESEED OIL	MY	724	613	373	216	98	92
	SOYBEAN OIL	MY	3,634	4,547	3,870	4,242	5,043	5,965
	SUNFLOWERSEED OIL	MY	1,349	1,695	1,625	1,317	783	806

NOTE: PRODUCTION IS OIL PROCESSED FROM DOMESTIC AND/OR IMPORTED OILSEEDS, PLUS OIL FROM OTHER DOMESTIC SOURCES (E.G. PALM OIL, FISH OIL). ANIMAL FATS ARE NOT INCLUDED. CONSUMPTION DATA MAY INCLUDE YEAR-TO-YEAR ADJUSTMENTS IN CASES WHERE STOCKS DATA ARE NOT AVAILABLE OR ARE NOT RELIABLE. TOTALS ARE FOR ALL COUNTRIES CONTAINED IN THE TABLE.

SOURCE: COUNSELOR AND ATTACHE REPORTS, OFFICIAL STATISTICS
USDA ESTIMATES

FOREIGN AGRICULTURAL SERVICE
COTTON, OILSEEDS, TOBACCO
and SEEDS DIVISION

DATE: August 2002

TABLE 10
 UNITED STATES: OILSEEDS AND PRODUCTS SUPPLY AND DISTRIBUTION
 LOCAL MARKETING YEARS
 (1,000 METRIC TONS)

	AREA HA	YIELD MT/HA	PROD	IMPORTS	EXPORTS	CRUSH	DOMESTIC CONS	ENDING STOCKS
MAJOR OILSEEDS								
1993/94(93)	30,132	1.973	59,463	551	16,524	39,218	45,784	6,678
1994/95(94)	32,183	2.476	79,671	510	23,865	43,994	52,721	10,273
1995/96(95)	33,536	2.058	69,026	466	23,872	42,572	49,842	6,051
1996/97(96)	32,555	2.296	74,755	594	24,746	44,135	52,000	4,654
1997/98(97)	35,351	2.351	83,095	670	24,519	48,889	57,455	6,445
1998/99(98)	35,275	2.392	84,365	684	22,721	47,814	57,993	10,780
1999/00(99)	37,149	2.216	82,315	759	27,395	47,902	57,474	8,985
2000/01(00)	36,805	2.307	84,891	817	27,976	49,021	58,897	7,820
2001/02(01)	37,343	2.406	89,857	662	29,857	50,828	61,946	6,536
2002/03(02)	36,591	2.241	81,988	526	23,282	50,072	60,420	5,348
MAJOR PROTEIN MEALS								
1993/94(93)	-	-	30,284	1,024	5,106	-	26,225	200
1994/95(94)	-	-	33,240	860	6,355	-	27,683	262
1995/96(95)	-	-	32,294	1,048	5,687	-	27,665	252
1996/97(96)	-	-	33,772	1,025	6,598	-	28,222	229
1997/98(97)	-	-	37,422	1,355	8,698	-	30,009	299
1998/99(98)	-	-	36,799	1,208	6,717	-	31,256	333
1999/00(99)	-	-	36,698	1,248	6,849	-	31,133	297
2000/01(00)	-	-	38,180	1,165	7,230	-	32,016	396
2001/02(01)	-	-	39,200	1,098	7,193	-	33,199	302
2002/03(02)	-	-	38,631	1,056	6,361	-	33,353	275
MAJOR VEGETABLE AND MARINE OILS								
1993/94(93)	-	-	7,382	1,345	1,093	-	7,851	774
1994/95(94)	-	-	8,486	1,294	1,953	-	7,862	739
1995/96(95)	-	-	8,169	1,279	977	-	8,059	1,151
1996/97(96)	-	-	8,333	1,554	1,515	-	8,580	943
1997/98(97)	-	-	9,505	1,644	2,044	-	9,064	984
1998/99(98)	-	-	9,430	1,412	1,637	-	9,190	999
1999/00(99)	-	-	9,371	1,522	1,133	-	9,545	1,214
2000/01(00)	-	-	9,501	1,669	1,054	-	9,640	1,690
2001/02(01)	-	-	9,723	1,456	1,522	-	9,857	1,490
2002/03(02)	-	-	9,747	1,506	1,499	-	10,052	1,192

NOTE: MAJOR OILSEEDS INCLUDE COTTONSEED, PEANUTS, RAPESEED, SOYBEANS, AND SUNFLOWERSEED
 MAJOR PROTEIN MEALS INCLUDE COPRA, COTTONSEED, FISH, PEANUT, RAPESEED, SOYBEAN, AND SUNFLOWERSEED
 MAJOR VEGETABLE AND FISH OILS INCLUDE COCONUT, COTTONSEED, FISH, OLIVE,
 PALM, PALM KERNEL, PEANUT, RAPESEED, SOYBEAN, AND SUNFLOWERSEED.

SOURCE: COUNSELOR AND ATTACHE REPORTS,
 OFFICIAL STATISTICS, USDA ESTIMATES
 DATE: August 2002

FOREIGN AGRICULTURAL SERVICE
 COTTON, OILSEEDS, TOBACCO
 and SEEDS DIVISION

TABLE 11
 UNITED STATES: SOYBEANS AND PRODUCTS SUPPLY AND DISTRIBUTION
 LOCAL MARKETING YEARS
 (1000 METRIC TONS)

	AREA HA	YIELD MT/HA	PROD	IMPORTS	EXPORTS	CRUSH	DOMESTIC CONS	ENDING STOCKS
SOYBEAN (SEP-AUG)								
1993/94(93)	23,191	2.194	50,885	175	16,006	34,716	37,318	5,691
1994/95(94)	24,609	2.781	68,444	149	22,867	38,242	42,305	9,112
1995/96(95)	24,906	2.376	59,174	121	23,108	37,273	40,306	4,993
1996/97(96)	25,637	2.527	64,780	242	24,110	39,080	42,317	3,588
1997/98(97)	27,968	2.616	73,176	135	23,760	43,464	47,701	5,438
1998/99(98)	28,507	2.617	74,598	82	21,898	43,262	48,736	9,484
1999/2000(99)	29,318	2.463	72,224	114	26,537	42,938	47,388	7,897
2000/2001(00)	29,303	2.561	75,055	97	27,103	44,652	49,203	6,743
2001/2002(01)	29,542	2.663	78,669	82	28,849	46,403	51,332	5,313
2002/2003(02)	29,149	2.454	71,533	136	22,317	45,722	50,455	4,210
SOYBEAN MEAL (OCT-SEP)								
1993/94(93)	-	-	27,682	63	4,867	-	22,927	136
1994/95(94)	-	-	30,182	58	6,092	-	24,081	203
1995/96(95)	-	-	29,508	68	5,446	-	24,140	193
1996/97(96)	-	-	31,035	92	6,344	-	24,785	191
1997/98(97)	-	-	34,633	51	8,464	-	26,213	198
1998/99(98)	-	-	34,285	90	6,461	-	27,812	300
1999/2000(99)	-	-	34,102	45	6,652	-	27,529	266
2000/2001(00)	-	-	35,733	46	6,988	-	28,709	348
2001/2002(01)	-	-	36,788	172	6,940	-	30,119	249
2002/2003(02)	-	-	36,265	181	6,124	-	30,344	227
SOYBEAN OIL (OCT-SEP)								
1993/94(93)	-	-	6,328	31	695	-	5,869	500
1994/95(94)	-	-	7,082	8	1,217	-	5,857	516
1995/96(95)	-	-	6,913	43	450	-	6,108	914
1996/97(96)	-	-	7,145	24	922	-	6,471	690
1997/98(97)	-	-	8,229	27	1,397	-	6,922	627
1998/99(98)	-	-	8,202	37	1,076	-	7,101	689
1999/2000(99)	-	-	8,085	37	624	-	7,282	905
2000/2001(00)	-	-	8,362	33	636	-	7,359	1,305
2001/2002(01)	-	-	8,582	20	1,089	-	7,620	1,198
2002/2003(02)	-	-	8,612	30	1,134	-	7,803	903

SOURCE: COUNSELOR AND ATTACHE REPORTS,
 OFFICIAL STATISTICS, USDA ESTIMATES
 DATE: August 2002

FOREIGN AGRICULTURAL SERVICE
 COTTON, OILSEEDS, TOBACCO
 and SEEDS DIVISION

TABLE 12
 BRAZIL: SOYBEANS AND PRODUCTS SUPPLY AND DISTRIBUTION
 LOCAL MARKETING YEARS
 (1,000 METRIC TONS)

	AREA HA	YIELD MT/HA	PROD	IMPORTS	EXPORTS	CRUSH	DOMESTIC CONS	ENDING STOCKS
SOYBEANS (FEB-JAN)								
1994/95(93)	11,440	2.159	24,700	900	5,395	18,736	20,386	651
1995/96(94)	11,680	2.217	25,900	900	3,492	21,599	23,249	710
1996/97(95)	10,950	2.205	24,150	1,300	3,633	20,154	21,702	825
1997/98(96)	11,800	2.314	27,300	1,450	8,328	18,910	20,469	778
1998/99(97)	13,000	2.500	32,500	500	9,336	21,900	23,579	863
1999/2000(98)	12,900	2.426	31,300	700	8,973	21,600	23,251	639
2000/01(99)	13,600	2.515	34,200	800	11,779	21,578	23,346	514
2001/02(00)	13,934	2.799	39,000	900	15,520	22,273	24,492	402
2002/03(01)	16,350	2.661	43,500	900	16,700	25,126	27,347	755
2003/04(01)	17,500	2.743	48,000	900	20,500	25,800	28,194	961
SOYBEAN MEAL (FEB-JAN)								
1994/95(93)	-	-	14,726	0	10,519	-	4,299	434
1995/96(94)	-	-	16,977	0	11,471	-	5,300	640
1996/97(95)	-	-	15,841	100	10,900	-	5,300	381
1997/98(96)	-	-	14,863	300	9,800	-	5,400	344
1998/99(97)	-	-	17,235	138	10,850	-	6,535	332
1999/2000(98)	-	-	17,000	175	10,150	-	6,900	457
2000/01(99)	-	-	16,900	118	9,865	-	7,200	410
2001/02(00)	-	-	17,900	230	10,852	-	7,488	200
2002/03(01)	-	-	20,170	100	12,100	-	7,900	470
2003/04(01)	-	-	20,640	200	12,440	-	8,400	470
SOYBEAN OIL (FEB-JAN)								
1994/95(93)	-	-	3,522	320	1,556	-	2,399	144
1995/96(94)	-	-	4,061	162	1,643	-	2,500	224
1996/97(95)	-	-	3,749	175	1,320	-	2,630	198
1997/98(96)	-	-	3,521	200	1,075	-	2,676	168
1998/99(97)	-	-	4,096	200	1,418	-	2,827	219
1999/2000(98)	-	-	4,040	240	1,463	-	2,816	220
2000/01(99)	-	-	4,012	111	1,133	-	2,942	268
2001/02(00)	-	-	4,250	250	1,620	-	2,958	190
2002/03(01)	-	-	4,700	300	1,860	-	3,100	230
2003/04(01)	-	-	4,825	300	1,990	-	3,200	165

SOURCE: COUNSELOR AND ATTACHE REPORTS,
 OFFICIAL STATISTICS, USDA ESTIMATES
 DATE: August 2002

FOREIGN AGRICULTURAL SERVICE
 COTTON, OILSEEDS, TOBACCO
 and SEEDS DIVISION

TABLE 13
 ARGENTINA: SOYBEANS AND PRODUCTS SUPPLY AND DISTRIBUTION
 LOCAL MARKETING YEARS
 (1,000 METRIC TONS)

	AREA HA	YIELD MT/HA	PROD	IMPORTS	EXPORTS	CRUSH	DOMESTIC CONS	ENDING STOCKS
SOYBEANS (APR-MAR)								
1994/95(93)	5,400	2.296	12,400	0	2,957	8,718	9,276	322
1995/96(94)	5,700	2.193	12,500	0	2,614	9,280	9,843	365
1996/97(95)	5,980	2.079	12,430	10	2,014	9,927	10,515	276
1997/98(96)	6,200	1.806	11,200	650	725	10,423	10,993	408
1998/99(97)	6,954	2.804	19,500	1,250	3,231	16,750	17,362	565
1999/2000(98)	8,165	2.449	20,000	790	3,400	17,100	17,826	129
2000/01(99)	8,583	2.470	21,200	400	4,100	16,500	17,512	117
2001/02(00)	10,400	2.673	27,800	420	7,500	19,500	20,720	117
2002/03(01)	11,300	2.611	29,500	400	7,800	20,500	21,777	440
2003/04(01)	12,000	2.500	30,000	400	8,200	21,100	22,350	290
SOYBEAN MEAL (APR-MAR)								
1994/95(93)	-	-	7047	0	6731	-	185	292
1995/96(94)	-	-	7563	0	7150	-	190	515
1996/97(95)	-	-	7950	0	7781	-	195	489
1997/98(96)	-	-	8350	0	8350	-	200	289
1998/99(97)	-	-	13400	0	12950	-	205	534
1999/2000(98)	-	-	13500	0	13190	-	210	634
2000/01(99)	-	-	13125	0	13325	-	215	219
2001/02(00)	-	-	15500	0	15100	-	219	400
2002/03(01)	-	-	16200	0	15950	-	225	425
2003/04(01)	-	-	16775	0	16525	-	250	425
SOYBEAN OIL (APR-MAR)								
1994/95(93)	-	-	1508	0	1442	-	77	34
1995/96(94)	-	-	1605	0	1477	-	95	67
1996/97(95)	-	-	1717	0	1634	-	100	50
1997/98(96)	-	-	1960	0	1860	-	100	50
1998/99(97)	-	-	2970	0	2725	-	102	193
1999/2000(98)	-	-	3150	0	3060	-	103	180
2000/01(99)	-	-	3030	0	3075	-	104	31
2001/02(00)	-	-	3585	0	3410	-	120	86
2002/03(01)	-	-	3775	0	3650	-	126	85
2003/04(01)	-	-	3882	0	3750	-	120	97

SOURCE: COUNSELOR AND ATTACHE REPORTS,
 OFFICIAL STATISTICS, USDA ESTIMATES
 DATE: August 2002

FOREIGN AGRICULTURAL SERVICE
 COTTON, OILSEEDS, TOBACCO
 and SEEDS DIVISION

TABLE 14
 ARGENTINA: SUNFLOWERSEED AND PRODUCTS SUPPLY AND DISTRIBUTION
 LOCAL MARKETING YEARS
 (1,000 METRIC TONS)

	AREA HA	YIELD MT/HA	PROD	IMPORTS	EXPORTS	CRUSH	DOMESTIC CONS	ENDING STOCKS
SUNFLOWERSEED (MAR-FEB)								
1993/94(92)	2,070	1.860	3,850	0	580	3,240	3,290	116
1994/95(93)	2,800	2.107	5,900	0	884	4,951	5,011	121
1995/96(94)	3,200	1.750	5,600	0	550	5,000	5,060	111
1996/97(95)	2,900	1.862	5,400	0	100	5,175	5,235	176
1997/98(96)	3,331	1.651	5,500	0	453	4,975	5,035	188
1998/99(97)	3,909	1.816	7,100	0	910	6,195	6,255	123
1999/2000(98)	3,477	1.726	6,000	0	283	5,200	5,260	580
2000/01(99)	1,886	1.617	3,050	0	72	3,460	3,500	58
2001/02(00)	1,980	1.869	3,700	0	300	3,350	3,390	68
2002/03(01)	2,300	1.739	4,000	0	300	3,675	3,710	58
SUNFLOWERSEED MEAL (MAR-FEB)								
1993/94(92)	-	-	1,393	0	1,300	-	120	107
1994/95(93)	-	-	2,129	0	1,996	-	150	90
1995/96(94)	-	-	2,100	0	1,954	-	140	96
1996/97(95)	-	-	2,174	0	2,050	-	140	80
1997/98(96)	-	-	2,092	0	1,940	-	142	90
1998/99(97)	-	-	2,573	0	2,420	-	150	93
1999/2000(98)	-	-	2,160	0	1,950	-	175	128
2000/01(99)	-	-	1,435	0	1,280	-	189	94
2001/02(00)	-	-	1,390	0	1,220	-	185	79
2002/03(01)	-	-	1,525	0	1,345	-	185	74
SUNFLOWERSEED OIL (MAR-FEB)								
1993/94(92)	-	-	1,280	0	920	-	390	76
1994/95(93)	-	-	1,980	0	1,556	-	419	81
1995/96(94)	-	-	2,000	0	1,510	-	480	91
1996/97(95)	-	-	2,070	0	1,610	-	480	71
1997/98(96)	-	-	1,990	0	1,510	-	480	71
1998/99(97)	-	-	2,450	0	1,835	-	561	125
1999/2000(98)	-	-	2,140	0	1,634	-	560	71
2000/01(99)	-	-	1,440	0	910	-	546	55
2001/02(00)	-	-	1,390	0	863	-	525	57
2002/03(01)	-	-	1,522	0	1,000	-	522	57

SOURCE: COUNSELOR AND ATTACHE REPORTS,
 OFFICIAL STATISTICS, USDA ESTIMATES
 DATE: August 2002

FOREIGN AGRICULTURAL SERVICE
 COTTON, OILSEEDS, TOBACCO
 and SEEDS DIVISION

TABLE 15
EUROPEAN UNION:
OILSEEDS AND PRODUCTS SUPPLY AND DISTRIBUTION
(1,000 METRIC TONS)

	1998/99	1999/00	2000/01	2001/02 PRELIM	2002/03 FORECAST
OILSEED PRODUCTION					
RAPESEED	9,517	11,484	9,056	8,912	9,763
SUNFLOWERSEED	3,400	3,213	3,311	3,011	2,937
SOYBEANS	1,541	1,147	1,048	1,214	987
OTHER	720	836	761	779	677
TOTAL	15,178	16,680	14,176	13,916	14,364
PROTEIN MEAL CONSUMPTION 1/					
SOYBEAN	27,270	25,970	27,581	28,803	29,520
SUNFLOWERSEED	4,554	4,308	4,218	3,584	3,667
RAPESEED	5,657	6,125	5,347	5,364	5,473
CORN GLUTEN FEED/MEAL 2/	6,550	6,325	6,455	6,450	6,500
OTHER	4,026	4,231	4,692	4,658	4,670
TOTAL 3/	41,507	40,634	41,838	42,409	43,330
TOTAL SME 4/	42,864	41,720	42,882	43,447	44,367
OIL CONSUMPTION 1/					
SOYBEAN	1,876	1,495	1,795	1,874	1,930
OLIVE	1,798	1,773	1,829	1,853	1,832
SUNFLOWERSEED	2,025	1,948	2,072	1,935	2,037
RAPESEED	2,561	2,840	3,266	3,347	3,410
OTHER	3,312	3,543	4,177	4,307	4,339
TOTAL	11,572	11,599	13,139	13,316	13,548
IMPORTS(EX.INTRA TRADE) 5/					
SOYBEANS	16,026	14,502	17,993	19,477	20,002
SOYBEAN MEAL	16,425	16,524	17,233	17,952	18,165
SUNFLOWERSEED	2,764	2,212	2,057	1,226	1,352
EXPORTS(EX.INTRA TRADE) 5/ 6/					
SOYBEAN MEAL	1,282	1,272	1,883	2,240	2,290
SOYBEAN OIL	1,052	1,048	1,121	1,115	1,187
RAPESEED OIL	762	718	304	208	335

1/ AN AGGREGATE OF DIFFERENT MARKETING YEARS

2/ BASED ON EC IMPORT DATA ONLY

3/ CORN GLUTEN FEED/MEAL NOT INCLUDED

4/ 44-PERCENT SOYBEAN MEAL EQUIVALENT, INCLUDING CORN GLUTEN FEED/MEAL.

5/ OCTOBER-SEPTEMBER YEARS

SOURCE: COUNSELOR AND ATTACHE REPORTS
OFFICIAL STATISTICS
USDA ESTIMATES

DATE: August 2002

FOREIGN AGRICULTURAL SERVICE
COTTON, OILSEEDS, TOBACCO
and SEEDS DIVISION

TABLE 16
RUSSIA:
OILSEEDS AND PRODUCTS SUPPLY AND DISTRIBUTION
(1,000 METRIC TONS)

	1998/99	1999/00	2000/01	2001/02 PRELIM	2002/03 FORECAST
OILSEED PRODUCTION					
RAPESEED	125	135	148	140	150
SOYBEANS	297	334	342	350	370
SUNFLOWERSEED	3,000	4,150	3,915	2,700	3,000
TOTAL	3,422	4,619	4,405	3,190	3,520
PROTEIN MEAL CONSUMPTION					
SOYBEAN	561	660	500	575	645
SUNFLOWERSEED	720	985	995	920	935
RAPESEED	39	45	47	50	66
FISH	176	205	255	185	173
TOTAL 1/ TOTAL SME 2/	1,496 1,523	1,895 1,918	1,797 1,841	1,730 1,747	1,819 1,825
OIL CONSUMPTION					
SOYBEAN	239	280	343	495	512
COTTONSEED	1	3	1	1	1
SUNFLOWERSEED	1,005	1,185	1,280	1,140	1,185
RAPESEED	143	146	73	61	66
OTHER	80	125	227	298	270
TOTAL 1/	1,468	1,739	1,924	1,995	2,034
IMPORTS 3/					
SOYBEANS	200	65	20	100	150
SOYBEAN MEAL	350	365	165	250	265
SUNFLOWERSEED OIL	260	190	170	170	180
EXPORTS 3/					
SUNFLOWERSEED	890	855	730	50	150
SOYBEANS	80	45	15	15	30
SUNFLOWERSEED OIL	55	195	150	85	85
FISHMEAL	10	10	10	10	7

1/ AN AGGREGATE OF DIFFERENT MARKETING YEARS

2/ 44-PERCENT SOYBEAN MEAL EQUIVALENT

3/ ASSORTED MARKETING YEARS

SOURCE: COUNSELOR AND ATTACHE REPORTS
OFFICIAL STATISTICS
USDA ESTIMATES

FOREIGN AGRICULTURAL SERVICE
COTTON, OILSEEDS, TOBACCO
and SEEDS DIVISION

DATE: August 2002

TABLE 17
CHINA:
OILSEEDS AND PRODUCTS SUPPLY AND DISTRIBUTION
(1,000 METRIC TONS)

	1998/99	1999/00	2000/01	2001/02 PRELIM	2002/03 FORECAST
OILSEED PRODUCTION					
COTTONSEED	8,100	6,900	7,960	9,560	8,150
PEANUTS	11,886	12,639	14,440	14,420	14,750
RAPSEED	8,300	10,132	11,381	11,320	10,500
SOYBEANS	15,152	14,290	15,400	15,410	15,600
SUNFLOWERSEED	1,465	1,800	1,954	1,500	1,800
TOTAL	44,903	45,761	51,135	52,210	50,800
PROTEIN MEAL CONSUMPTION					
SOYBEAN	11,416	12,579	15,290	15,760	16,850
COTTONSEED	2,873	2,440	2,600	3,120	2,745
RAPSEED	5,570	6,909	7,190	6,840	6,411
PEANUT	2,411	2,506	2,645	2,625	2,709
OTHER	1,603	1,988	1,764	1,557	1,787
TOTAL 1/	23,873	26,422	29,489	29,902	30,502
TOTAL SME 2/	22,505	24,916	27,776	28,137	28,993
OIL CONSUMPTION					
SOYBEAN	3,080	2,871	3,265	3,871	4,293
COTTONSEED	963	850	900	1,116	955
PALM	1,275	1,200	1,579	2,000	2,200
RAPSEED	3,325	4,285	4,190	3,740	3,510
PEANUT	1,919	2,020	2,110	2,123	2,190
SUNFLOWER	183	199	215	181	224
OTHER	223	302	429	438	514
TOTAL 1/	10,968	11,727	12,688	13,469	13,886
IMPORTS 3/					
SOYBEANS	3,850	10,100	13,245	10,500	14,000
RAPSEED	2,150	3,675	2,360	800	800
FISHMEAL	650	1,000	750	625	700
SOYMEAL	1,400	633	100	60	150
PALM OIL	1,275	1,200	1,579	2,000	2,200
SOYBEAN OIL	950	556	80	375	800
RAPSEED OIL	175	40	85	40	40
EXPORTS 3/					
SOYBEANS	187	230	208	250	275
PEANUTS	360	540	450	525	500
SOYBEAN MEAL	7	29	110	900	500
COTTONSEED MEAL	72	145	100	230	125
RAPSEED MEAL	350	1,000	610	100	125
RAPSEED OIL	50	5	70	20	20

1/ AN AGGREGATE OF DIFFERENT MARKETING YEARS

2/ 44-PERCENT SOYBEAN MEAL EQUIVALENT

3/ ASSORTED MARKETING YEARS

SOURCE: COUNSELOR AND ATTACHE REPORTS
OFFICIAL STATISTICS
USDA ESTIMATES

DATE: August 2002

FOREIGN AGRICULTURAL SERVICE
COTTON, OILSEEDS, TOBACCO
and SEEDS DIVISION

TABLE 18
INDIA:
OILSEEDS AND PRODUCTS SUPPLY AND DISTRIBUTION
(1,000 METRIC TONS)

	1998/99	1999/00	2000/01	2001/02 PRELIM	2002/03 FORECAST
OILSEED PRODUCTION					
COTTONSEED	5,470	5,170	4,900	5,100	4,600
PEANUTS	7,450	5,500	5,700	7,600	7,300
RAPESEED	4,900	5,110	3,725	4,500	4,100
SOYBEANS	6,000	5,200	5,250	5,400	5,000
SUNFLOWERSEED	1,200	1,300	1,250	1,450	1,625
TOTAL	25,020	22,280	20,825	24,050	22,625
PROTEIN MEAL CONSUMPTION					
SOYBEAN	1,425	1,210	1,224	1,205	1,385
COTTONSEED	1,935	1,762	1,744	1,727	1,600
RAPESEED	2,440	2,720	2,450	2,305	2,090
PEANUT	2,400	1,735	1,790	2,310	2,250
OTHER	772	828	798	873	952
TOTAL 1/	8,972	8,255	8,006	8,420	8,277
TOTAL SME 2/	8,013	7,155	6,997	7,517	7,444
OIL CONSUMPTION					
SOYBEAN	1,805	1,582	2,215	2,485	2,768
COTTONSEED	618	569	570	573	529
PALM	2,310	3,500	4,100	3,575	3,680
RAPESEED	1,503	1,560	1,100	1,332	1,187
PEANUT	1,675	1,200	1,245	1,660	1,595
OTHER	1,332	1,488	1,416	1,083	1,130
TOTAL 1/	9,243	9,899	10,646	10,708	10,889
IMPORTS 3/					
SOYBEANS	0	0	0	0	0
SUNFLOWERSEED OIL	550	570	455	50	60
PALM OIL	2,900	3,300	4,000	3,400	3,700
SOYBEAN OIL	833	790	1,400	1,650	2,000
RAPESEED OIL	241	160	50	5	5
EXPORTS 3/					
PEANUTS	40	100	100	125	115
PEANUT MEAL	50	10	20	100	70
SOYBEAN MEAL	2,800	2,375	2,350	2,500	2,000
RAPESEED MEAL	160	130	50	350	290

1/ AN AGGREGATE OF DIFFERENT MARKETING YEARS

2/ 44-PERCENT SOYBEAN MEAL EQUIVALENT

3/ ASSORTED MARKETING YEARS

SOURCE: COUNSELOR AND ATTACHE REPORTS
OFFICIAL STATISTICS
USDA ESTIMATES

DATE: August 2002

FOREIGN AGRICULTURAL SERVICE
COTTON, OILSEEDS, TOBACCO
and SEEDS DIVISION

TABLE 19
MALAYSIA: PALM OIL SUPPLY AND DISTRIBUTION
(1,000 METRIC TONS)

YEAR	BEGINNING STOCKS	PRODUCTION 1/	EXPORTS 6/	CONSUMPTION 2/	ENDING STOCKS
1985/86	530	4,773	4,065	625	613
1986/87	613	4,560	3,977	544	652
1987/88	652	4,852	4,128	692	684
1988/89	684	5,636	4,670	763	887
1989/90	887	6,412	5,520	882	912
1990/91	912	6,033	5,436	915	817
1991/92	817	6,222	5,552	1,020	656
1992/93	656	7,125	5,740	1,274	1,026
1993/94	1,026	7,100	6,500	1,227	627
1994/95	627	7,771	6,634	1,170	646
1995/96					
OCT-DEC		2,156	1,650		
JAN-MAR		1,637	1,519		
APR-JUN		2,060	1,640		
JUL-SEP		2,402	1,930		
TOTAL 3/	646	8,264	6,660	1,370	894
1996/97					
OCT-DEC		2,286	2,005		
JAN-MAR		1,768	1,505		
APR-JUN		2,322	1,814		
JUL-SEP		2,629	2,069		
TOTAL 3/	894	9,005	7,544	1,458	907
1997/98					
OCT-DEC		2,343	1,883		
JAN-MAR		1,714	1,764		
APR-JUN		1,961	1,658		
JUL-SEP		2,490	2,116		
TOTAL 3/	907	8,508	7,421	1,366	719
1998/99					
OCT-DEC		2,149	1,794		
JAN-MAR		1,771	1,561		
APR-JUN		2,865	2,105		
JUL-SEP		2,973	2,433		
TOTAL 3/	719	9,758	8,100	1,459	1,208
1999/2000					
OCT-DEC		2,943	2,520		
JAN-MAR		2,225	2,030		
APR-JUN		2,415	1,875		
JUL-SEP		2,908	2,050		
TOTAL 3/	1,208	10,491	8,845	1,566	1,368
2000/2001					
OCT-DEC		3,290	2,567		
JAN-MAR		2,836	2,562		
APR-JUN		2,832	2,557		
JUL-SEP		2,979	2,337		
TOTAL 3,4/	1,368	11,937	10,475	1,675	1,216
2001/2002					
OCT-DEC		3,155	2,830		
JAN-MAR		2,601	2,390		
APR-JUN		2,732	2,680		
JUL-SEP		3,010	2,700		
TOTAL 5/	1,216	11,700	10,350	1,866	900

1/TOTALS ARE BASED ON AN OCTOBER-SEPTEMBER BASIS.

2/ UTILIZATION INCLUDES EXPORTS OF FURTHER PROCESSED PRODUCTS AND REFINING LOSSES AND THEREFORE IS HIGHER THAN THE ACTUAL LEVEL.

3/ QUARTERLY EXPORT DATA MAY NOT ADD TO YEAR TOTAL BECAUSE QUARTERLY IMPORT DATA IS NOT AVAILABLE AND MARKETING YEAR EXPORTS REPRESENT NET EXPORTS.

4/ PRELIMINARY

5/ FORECAST

6/ NET EXPORTS: EXCLUDING PALM AND FATTY ACID DISTILLATES.

SOURCE: COUNSELOR AND ATTACHE REPORTS, OFFICIAL STATISTICS, USDA ESTIMATES.

FOREIGN AGRICULTURAL SERVICE
COTTON, OILSEEDS, TOBACCO
and SEEDS DIVISION

August 2002

TABLE 20. SELECTED MONTHLY PRICES AND RATIOS

ITEM & UNIT	12-MO AV. END JUNE			JUNE			JULY			JULY 02 12MO AV	% CH JUNE 02
	2001	2002	%CH	2000	2001	%CH	2001	2002 1/	%CH		
SOYBEANS:											
NEARBY FUTURES (\$/MT)	173	172	0%	170	185	9%	186	206	10%	19%	11%
NOVEMBER FUTURES (\$/MT)	177	173	-2%	163	176	8%	191	193	1%	11%	9%
U.S. FARM (\$/MT)	166	166	0%	164	179	9%	176	202	15%	22%	13%
ILL. CRUSHER (\$/MT)	174	174	0%	174	191	9%	190	213	12%	22%	12%
ILL. CENT. (\$/mt)	168	168	0%	168	184	9%	184	205	12%	22%	12%
U.S. GULF (\$/MT)	185	184	0%	183	198	8%	198	222	12%	20%	12%
ROTTERDAM (\$/MT)	199	200	0%	191	213	12%	210	229	9%	15%	8%
BRAZIL 2/ (\$/MT)	178	179	0%	169	194	15%	191	202	6%	13%	5%
ARGENTINA 3/ (\$/MT)	175	174	-1%	165	188	14%	188	199	6%	14%	6%
ROTT. LESS FARM (\$/MT)	33	34	1%	27	34	24%	34	27	-21%	-20%	-20%
SOY MEAL:											
DECATUR 48% (\$/MT)	190	183	-4%	190	188	-1%	203	207	2%	13%	10%
ROTTERDAM (\$/MT)	188	175	-7%	182	172	-5%	186	177	-5%	1%	3%
ROTTERDAM (EUROS/MT)	213	193	-9%	213	180	-16%	216	178	-17%	-8%	-1%
BRAZIL 2/ (\$/MT)	187	175	-6%	180	168	-7%	192	176	-8%	0%	5%
ARGENTINA 3/ (\$/MT)	168	156	-7%	159	156	-2%	171	163	-5%	5%	4%
SOY OIL:											
DECATUR (\$/MT)	303	347	14%	313	390	24%	364	422	16%	21%	8%
ROTTERDAM (\$/MT)	322	396	23%	315	438	39%	409	470	15%	19%	7%
BRAZIL 2/ (\$/MT)	287	355	24%	280	417	49%	349	423	21%	19%	2%
ARGENTINA 3/ (\$/MT)	287	355	24%	273	417	53%	348	423	22%	19%	2%
PRICE											
VARIABILITY 4/											
US SOYBEANS AT FARM (%)	16%	18%		12%	18%		13%	31%		75%	76%
US CORN AT FARM (%)	30%	12%		25%	7%		25%	12%		-1%	63%
48% SOY MEAL/DECATUR (%)	22%	20%		23%	19%		23%	21%		2%	9%
SOY OIL, DECATUR (%)	28%	29%		17%	23%		30%	32%		11%	38%
PALM OIL, FOB MAL. (%)	44%	52%		38%	51%		41%	50%		-4%	-2%
PALM OIL:											
MALAYSIA RBD FOB (\$/MT)	229	316	38%	224	392	75%	287	376	31%	19%	-4%
MALAYSIA OLEIN FOB (\$/MT)	245	330	35%	240	403	68%	298	391	31%	18%	-3%
U.S. (\$/MT)	332	406	22%	312	473	52%	353	452	28%	11%	-4%
COCONUT OIL:											
U.S. (\$/MT)	362	394	9%	336	466	39%	365	464	27%	18%	0%
ROTTERDAM (\$/MT)	325	374	15%	317	446	41%	358	445	24%	19%	0%
TRADE WEIGHTED OIL PRICE 5/ ROTT (\$/MT)	320	411	29%	321	454	41%	397	468	18%	14%	3%
PRICE DIFFERENCE FROM U.S. SOYBEAN OIL:											
SOYBEAN OIL:											
ARGENTINA (%)	-6%	2%		-13%	7%		-4%	0%			
PALM OIL:											
MALAYSIA RBD (%)	-25%	-9%		-28%	1%		-21%	-11%			
MALAYSIA OLEIN (%)	-19%	-5%		-23%	3%		-18%	-7%			
U.S. (%)	10%	17%		0%	21%		-3%	7%			
COCONUT OIL:											
U.S. (%)	19%	14%		7%	19%		0%	10%			
ROTTERDAM (%)	7%	8%		1%	14%		-2%	6%			
CORN:											
U.S. FARM (\$/MT)	72	76	6%	69	78	12%	74	81	11%	7%	5%
COTTON:											
U.S. UPLAND (\$/MT)	1059	704	-34%	864	769	-11%	858	708	-17%	1%	-8%
WHEAT:											
U.S. FARM (\$/MT)	101	106	5%	101	108	7%	97	118	22%	12%	10%
CRB NEARBY FUTURES PRICE INDEX	220.1	197.6	-10%	209.2	203.9	-3%	205.2	211.5	3%	7%	4%
VALUE OF EURO:											
U.S./EURO	0.89	0.91	2%	0.85	0.96	12%	0.86	0.99	15%	10%	4%
SOYBEANS/CORN 6/:	2.48	2.33	-6%	2.53	2.48	-2%	2.56	2.66	4%	14%	7%
SOYBEANS/COTTON:	9.58	14.23	49%	11.38	13.98	23%	12.31	17.13	39%	20%	23%
SOYBEANS/WHEAT 6/:	1.65	1.56	-5%	1.63	1.67	2%	1.82	1.71	-6%	9%	3%
48% SOY MEAL/CORN:	2.65	2.40	-9%	2.75	2.42	-12%	2.76	2.54	-8%	5%	5%
SOY OIL/CORN:	4.25	4.56	7%	4.52	5.03	11%	4.94	5.17	5%	13%	3%
WHEAT/CORN 6/:	1.50	1.49	-1%	1.56	1.49	-4%	1.41	1.56	11%	4%	5%
SOY OIL/SOY MEAL:	1.61	1.90	18%	1.65	2.08	26%	1.79	2.04	14%		
FEED PROFITABILITY 7/:	1.55	1.40	-10%	1.66	1.29	-22%	1.62	1.25	-23%	-11%	-4%
HOG/CORN PRICE RATIO:	24.24	19.67	-19%	29.66	18.17	-39%	27.65	18.45	-33%	-6%	2%
BROILER/FEED PRICE RATIO 8/:	7.74	7.34	-5%	8.56	6.58	-23%	8.23	5.74	-30%	-22%	-13%
CRUSH MARGIN:	27.17	29.02	7%	29.22	22.94	-22%	31.87	20.82	-35%	-28%	-9%
SOY OIL SHARE SB. VAL :	28.34	31.70	12%	29.06	34.05	17%	30.73	33.65	9%	6%	-1%
US SOYBEAN EXPORTS 9/:	2.30	2.42	5%	1.08	1.14	6%	0.90	1.48	64%	-39%	30%
US SOYBEAN CRUSH 10/:	3.70	3.87	5%	3.48	3.67	5%	3.69	3.68	0%	-5%	0%
TOTAL US SOBEAN DIS.	5.99	6.29	5%	4.56	4.81	5%	4.59	5.15	12%	-18%	7%
US SOY OIL BEG STOCKS	1.06	1.30	23%	1.20	1.34	11%	1.26	1.23	-2%	-5%	-8%
MAL. PALM OIL BEG STKS	1.31	1.12	-14%	1.19	0.93	-22%	1.03	0.91	-12%	-19%	-2%
SUB-TOTAL OIL STOCKS	2.36	2.42	3%	2.39	2.27	-5%	2.29	2.14	-6%	-12%	-5%

1/ PRELIMINARY. 2/ FOB RIO GRANDE. 3/ FOB BUENOS AIRES. 4/ (12-MO HIGH LESS 12-MO LOW)/12-MO AV. 5/ INCLUDES SOY 35%; PALM 35%; RAPE & SUN 15% EACH. 6/ PER BUSHEL. 7/ INDEX OF PRICES RECEIVED BY FARMERS FOR LIVESTOCK & LIVESTOCK PRODUCTS DIVIDED BY THE INDEX OF PRICES PAID FOR FEED, 1910-14 BASE. 8/ USING 70/30 CORN/SOYBEAN MEAL RATION. 9/ MONTHLY CENSUS DATA PLUS EXPORT INSPECTIONS FOR MOST RECENT TWO MONTHS. 10. MONTHLY CENSUS DATA PLUS SEASONAL ADJUSTMENTS FOR MOST RECENT MONTH.

TABLE 21.
OILSEED PRICES
(US DOLLARS PER METRIC TON)

YEAR BEG. OCT.1	SOYBEANS					PEANUT		SUNFLOWERSEED		RAPESEED	COPRA	LINSEED
	U.S. 1/	U.S. 2/	BRAZIL 3/	ARG 4/	ROTT 5/	U.S. 6/	ROTT 7/	U.S. 8/	ROTT 9/	HAMB 10/	ROTT 11/	ROTT 12/
OCT-SEP AVG. 90/91-99/00	218	221	227	223	253	624	991	232	226	251	392	246
1990/91	209	210	214	207	241	798	1539	238	N/A	199	247	222
1991/92	205	208	211	207	237	600	831	192	N/A	205	397	201
1992/93	213	216	222	217	246	640	958	215	271	234	292	229
1993/94	233	234	235	231	259	668	1088	284	317	284	388	232
1994/95	205	208	217	214	248	609	856	236	309	289	432	261
1995/96	263	273	284	277	304	635	986	254	312	298	487	288
1996/97	274	278	285	288	307	603	926	258	266	284	452	298
1997/98	230	233	240	231	259	578	1055	256	309	296	398	302
1998/99	176	177	184	179	225	563	847	223	257	227	468	235
1999/00	173	175	183	180	208	544	820	168	214	190	357	193
2000/01												
OCT.	164	166	183	186	204	584	836	129	180	185	210	202
NOV.	167	171	186	189	205	575	913	134	194	189	237	207
DEC.	176	181	195	196	212	602	1030	142	208	200	228	211
JAN.	172	170	189	178	205	653	959	153	214	197	205	207
FEB.	164	163	176	164	200	N/A	913	163	207	191	193	200
MAR.	161	160	166	158	187	N/A	890	165	215	196	182	209
APR.	155	155	158	152	180	N/A	880	169	222	200	183	206
MAY	159	162	159	156	183	N/A	866	167	224	201	189	219
JUN.	164	168	169	165	191	N/A	875	193	227	197	196	223
JUL.	176	184	191	188	210	N/A	834	194	243	215	223	232
AUG.	177	180	193	186	216	531	830	209	246	224	235	244
SEP.	169	166	191	181	211	549	830	190	251	229	210	245
AVERAGE	167	169	180	175	200	582	888	167	219	202	208	217
2001/02												
OCT.	150	152	177	173	187	503	743	181	257	221	195	245
NOV	153	156	178	172	189	465	720	200	308	231	202	245
DEC.	154	157	173	168	189	434	680	217	314	224	212	244
JAN.	155	156	161	158	188	302	686	210	299	221	221	245
FEB.	155	157	160	162	187	236	690	220	304	212	232	242
MAR.	161	165	164	163	191	N/A	630	225	290	210	232	242
APR.	164	168	171	164	192	N/A	623	234	277	196	244	244
MAY	170	175	181	175	202	N/A	615	231	293	199	263	248
JUN.	179	184	194	188	213	N/A	705	262	272	211	289	266
*JUL.	202	205	202	199	229	N/A	715	N/A	274	222	289	275
AUG. SEP.												
AVERAGE	164	168	176	172	197	388	681	220	289	215	238	250

1/ U.S. FARM PRICE; USDA. 2/ U.S. NO.1 YELLOW CASH CENTRAL ILLINOIS; WALL STREET JOURNAL.

3/ RIO GRANDE, BRAZIL FOB; SAFRAS AND MERCADO. 4/ ARGENTINA FOB B.AIRES; SAFRAS AND MERCADO.

5/ ROTTERDAM CIF; VARIOUS SOURCES; OIL WORLD. 6/ U.S. FARM PRICE; IN-SHELL BASIS; USDA.

7/ ROTT CIF; US RUNNERS 40/50%, PUBLIC LEDGER PRIOR TO SEP 90; OIL WORLD FROM OCT 90 TO PRESENT.

8/ U.S. FARM PRICE; USDA. 9/ ROTTERDAM CIF; EC LOWER RHINE (BEGINNING SEP 93) U.S./CANADA PRIOR; OIL WORLD.

10/HAMBURG CIF; EUROPE "00" OIL; OIL WORLD. 11/ ROTTERDAM CIF; PHILLIPINES/INDONESIA; OIL WORLD

12/ ROTTERDAM CIF; CANADA NO.1; OIL WORLD.

DATE: AUGUST 2002

FOREIGN AGRICULTURAL SERVICE
COTTON, OILSEEDS, TOBACCO
and SEEDS DIVISION

TABLE 22.
PROTEIN MEAL PRICES
(US DOLLARS PER METRIC TON)

YEAR BEG. OCT.1	SOYBEAN					COTTON- SEED U.S. 6/	SUNFLOWERSEED		PEANUT		FISH HAM 11/	RAPESEED HAM 12/	COPRA ROTT 13/	CORN GLUTEN 14/
	U.S. 1/	U.S. 2/	BRA 3/	ARG 4/	ROT 5/		U.S. 7/	ROT 8/	U.S. 9/	ROT 10/				
OCT-SEP AVG. 90/91-99/00	200	211	198	181	205	162	96	117	187	165	486	143	127	125
1990/91	187	200	178	171	198	145	97	113	206	154	468	131	133	146
1991/92	194	209	184	176	203	155	85	123	170	155	494	139	144	146
1992/93	201	214	185	183	207	178	98	134	191	165	390	157	131	135
1993/94	199	213	182	174	202	181	104	127	215	176	364	152	134	127
1994/95	167	179	172	151	184	123	69	103	142	161	448	134	125	128
1995/96	248	260	256	233	256	210	136	151	223	201	587	180	162	159
1996/97	286	289	289	257	278	212	122	138	256	235	579	175	134	127
1997/98	193	204	201	174	197	159	93	103	231	134	686	139	105	99
1998/99	145	153	150	130	150	121	72	76	110	104	442	105	108	96
1999/00	176	185	182	159	180	141	83	102	122	N/A	407	124	91	91
2000/01														
OCT.	180	189	193	170	194	165	91	111	130	N/A	414	136	84	91
NOV.	188	198	205	178	203	156	94	122	130	N/A	413	143	86	94
DEC.	207	216	219	194	223	177	98	139	130	N/A	463	168	94	105
JAN.	194	202	201	190	215	203	117	124	157	N/A	480	156	97	106
FEB.	174	183	189	172	183	164	121	113	132	N/A	464	135	94	91
MAR.	164	172	166	156	169	152	109	105	130	N/A	443	137	84	88
APR.	165	175	159	153	161	154	95	101	122	N/A	436	122	84	88
MAY	172	182	171	154	172	152	86	111	124	N/A	438	137	94	88
JUN.	179	190	180	159	182	140	88	117	N/A	N/A	457	144	96	91
JUL.	192	203	192	171	186	143	97	124	136	N/A	482	137	95	94
AUG.	188	197	181	159	183	144	105	125	144	N/A	508	134	99	102
SEP.	180	189	186	162	184	145	103	123	138	N/A	507	137	101	102
AVERAGE	182	191	187	168	188	158	100	118	134	N/A	459	141	92	95
2001/02														
OCT.	174	182	181	157	182	145	94	120	127	N/A	509	139	97	101
NOV	173	183	187	156	182	141	94	117	123	N/A	543	137	93	95
DEC.	162	170	175	147	173	148	94	114	110	N/A	573	137	93	94
JAN.	N/A	174	182	161	182	147	91	112	113	N/A	585	137	102	93
FEB.	N/A	169	174	156	169	138	90	103	110	N/A	590	137	108	89
MAR.	N/A	177	165	153	164	145	94	101	116	N/A	593	128	100	86
APR.	N/A	178	162	148	166	137	97	106	121	N/A	609	122	105	85
MAY	N/A	181	164	153	169	133	99	106	116	N/A	625	128	107	86
JUN.	N/A	188	168	156	172	152	99	101	N/A	N/A	631	120	107	87
*JUL.	N/A	207	176	163	177	N/A	N/A	105	N/A	N/A	619	114	105	90
AUG.														
SEP.														
AVERAGE	170	181	173	155	174	143	95	109	117	N/A	588	130	102	91

1/ DECATUR; AVERAGE WHOLSALE 44% PROTEIN; USDA. 2/ DECATUR, AVERAGE WHOLSALE 48% PROTEIN; USDA.
3/ RIO GRANDE, BRAZIL FOB; BULK RATE 45-46% PROTEIN; SAFRAS AND MERCADO. 4/ ARG. PELLETS, FOB B.AIRES;
SAFRAS AND MERCADO. 5/ ROTTERDAM CIF; ARG. 45/46%; OIL WORLD. 6/ MEMPHIS FOB; 41% PROTEIN SOLVENT
EXTRACTION; USDA. 7/ MINNEAPOLIS FOB; 32% PROTEIN; USDA. 8/ ROTTERDAM CIF; ARGENTINA-URUGUAY PELLETS
37-38%; OIL WORLD. 9/ SOUTHEAST MILLS FOB. 10/ ROTT CIF; INDIAN 48% PROTEIN; OIL WORLD. 11/HAMBURG CIF;
ANY ORIGIN 64-65% PROTEIN; OIL WORLD. 12/ HAMBURG FOB; EX-MILL 34% PROTEIN; OIL WORLD. 13/ ROTTERDAM CIF;
PHILIPPINES EXPELLER PELLETS 26% PROTEIN; OIL WORLD. 14/ ROTTERDAM CIF; PELLETS 23-24% PROTEIN; OIL WORLD.

DATE: AUGUST 2002

FOREIGN AGRICULTURAL SERVICE
COTTON, OILSEEDS, TOBACCO
and SEEDS DIVISION

TABLE 23.
VEGETABLE OIL PRICES
(US DOLLARS PER METRIC TON)

YEAR BEGINNING. OCT.1	SOYBEANS				COTTONSEED		SUNFLOWERSEED		PEANUT		PALM	RAPESEED	COCONUT	CORN
	U.S. 1/	BRAZIL 2/	ARG 3/	ROTT 4/	U.S. 5/	ROTT 6/	U.S. 7/	ROTT 8/	U.S. 9/	ROTT 10/	MALAY 11/	ROTT 12/	ROTT 13/	U.S. 15/
OCT-SEP AVG. 90/91-99/00	495	482	483	515	583	629	532	561	865	866	461	507	599	549
1990/91	463	418	415	454	492	614	520	480	931	975	318	417	364	615
1991/92	421	394	398	437	503	545	477	459	602	641	365	416	605	569
1992/93	472	420	408	453	663	688	559	492	604	674	382	441	446	461
1993/94	595	539	543	580	668	749	685	627	952	973	445	578	564	582
1994/95	606	608	623	642	644	671	619	691	977	1005	651	637	656	584
1995/96	545	537	533	575	585	613	560	617	888	928	523	566	746	556
1996/97	496	514	515	536	564	588	499	545	963	959	526	539	693	530
1997/98	569	608	614	633	636	693	595	730	1080	964	601	637	625	638
1998/99	438	452	453	483	602	632	444	560	876	801	486	482	748	558
1999/00	344	328	332	356	474	496	365	413	780	744	309	359	539	393
2000/01														
OCT.	298	271	272	313	400	459	317	340	763	674	218	325	340	232
NOV.	295	284	282	316	393	460	314	379	783	684	226	326	367	229
DEC.	289	288	289	321	380	457	321	396	802	697	210	337	329	232
JAN.	276	273	281	306	358	441	318	386	821	688	200	338	319	226
FEB.	273	266	279	302	335	424	320	390	816	690	193	338	285	244
MAR.	306	298	287	329	342	446	347	430	791	693	223	363	289	263
APR.	298	280	268	321	309	395	334	436	750	699	223	379	293	303
MAY	298	266	272	295	320	383	336	431	728	695	207	375	295	327
JUN.	313	280	273	315	293	395	362	443	728	699	224	367	317	351
JUL.	364	349	348	409	370	429	408	495	728	668	287	425	358	381
AUG.	377	358	358	422	379	443	432	504	750	664	333	451	363	413
SEP.	340	331	330	382	348	401	393	503	750	665	274	442	322	381
AVERAGE	311	295	295	336	352	428	350	428	768	685	235	372	323	299
2001/02														
OCT.	317	310	308	376	318	396	384	522	799	666	235	434	307	379
NOV.	336	344	344	388	351	425	422	620	816	668	290	452	330	403
DEC.	333	358	357	403	354	403	532	651	816	668	302	460	339	495
JAN.	327	362	365	389	361	408	522	606	772	665	322	449	362	453
FEB.	312	323	323	358	350	408	518	578	617	665	302	418	376	405
MAR.	325	322	322	353	370	420	517	557	600	671	311	411	366	405
APR.	338	340	340	370	374	431	514	552	595	656	317	409	411	390
MAY	353	375	375	397	396	443	516	574	595	647	337	410	420	377
JUN.	390	417	417	438	429	462	556	595	661	641	392	451	446	389
*JUL.	422	423	423	470	N/A	474	N/A	602	N/A	635	376	477	445	N/A
AUG.														
SEP.														
AVERAGE	345	357	357	394	367	427	498	586	697	658	318	437	380	411

1/ DECATUR; AVERAGE WHOLESALE TANK CRUDE; USDA. 2/ RIO GRANDE, BRAZIL FOB; BULK RATE; SAFRAS AND MERCADO. 3/ C.I.A.R.A. FROM 1980 TO APRIL 1989; CRUDE FOB, BUENOS AIRES SAFRAS AND MERCADO FROM MAY 89. 4/ DUTCH FOB; EX-MILL; OIL WORLD. 5/ VALLEY POINTS FOB; TANK CARS CRUDE; USDA. 6/ ROTTERDAM CIF/FOB GULF SINCE 1994; US PBSY; OIL WORLD. 7/ MINNEAPOLIS FOB; USDA. 8/ EU FOB NW EURO PORTS; OIL WORLD. 9/ SOUTH EAST MILLS FOB; TANK CARS CRUDE; USDA. 10/ ROTTERDAM CIF; ANY ORIGIN; OIL WORLD. 11/ MALAYSIA FOB;RBD; PORLA. 12/ ROTTERDAM, DUTCH, FOB EX-MILL; OIL WORLD. 13/ ROTTERDAM CIF; PHILIPPINES/INDONESIA; OIL WORLD. 14/ ROTTERDAM; EX-TANK; OIL WORLD. 15/ DECATUR; CRUDE; AMS AND WALL STREET JOURNAL.

DATE: AUGUST 2002

FOREIGN AGRICULTURAL SERVICE
COTTON, OILSEEDS, TOBACCO
and SEEDS DIVISION

coupled with below trend growth in palm oil production has lead to a tightening of the availability of edible oils.