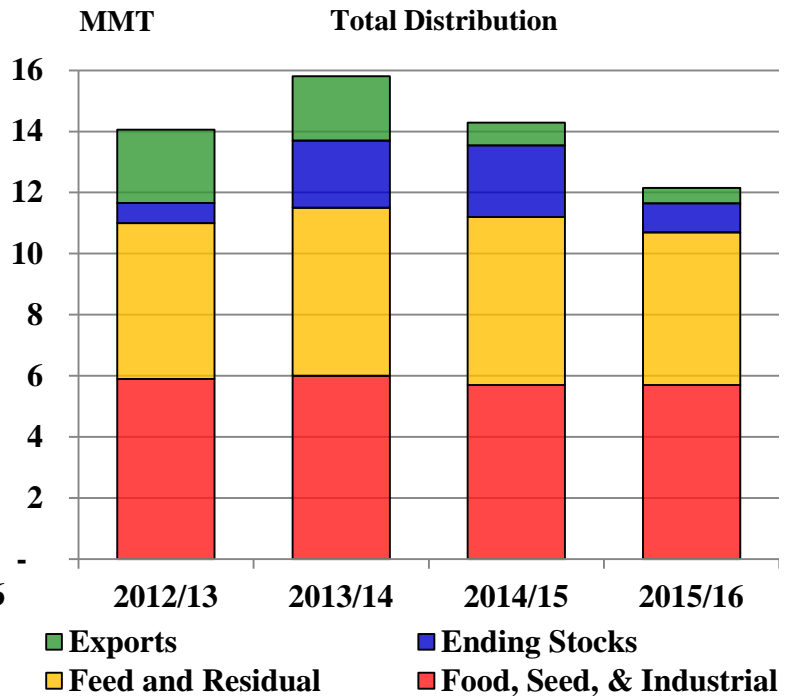
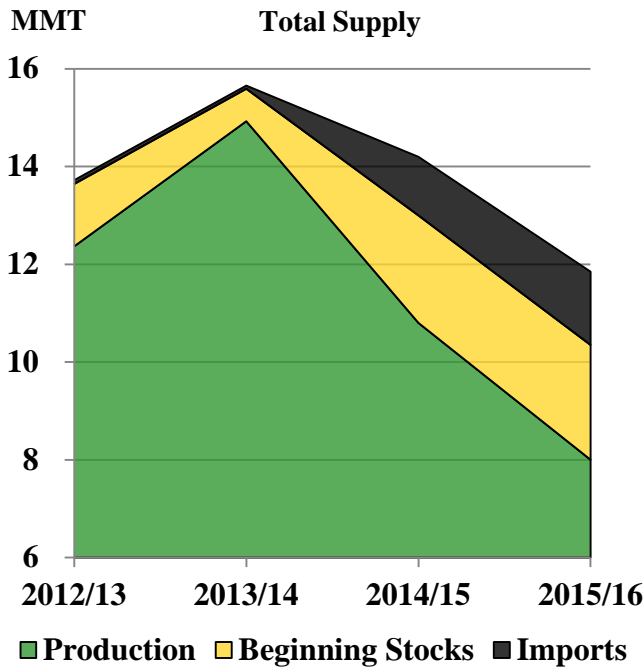




Grain: World Markets and Trade

South Africa Imports Corn as Drought Continues



South Africa is projected to remain a net corn importer in the 2015/16 marketing year with imports forecast to nearly a quarter-century high. Arriving shipments have accelerated and are expected to continue. Internal corn prices have risen dramatically and are at a considerable premium over international quotes. Recent imports from Mexico and Zambia have provided white corn, while larger quantities of yellow corn have begun streaming in from South America. Steady demand for both corn varieties will likely persist in southern Africa through 2015/16.

A prolonged drought is substantially affecting corn production in South Africa, the perennial regional supplier, as the new crop planting season comes to a close in the largely rainfed corn belt. More than half of the crop produced is white corn, primarily for human consumption. Domestic consumption is expected to drop only modestly relative to the cut in production as the crop shortfall is moderated by considerable carryin stocks. Exportable supplies will be limited for South Africa. Marketing year exports are projected to taper off to the lowest level since 1991/92, which coincided with another historic drought.

For email subscription, click here to register: <https://public.govdelivery.com/accounts/USDAFAS/subscriber/new>

TABLE OF CONTENTS

| | |
|--|-----------|
| World Markets and Trade: Commentary and Current Data | |
| Wheat | 4 |
| Rice | 9 |
| Coarse Grains..... | 15 |
| Historical Data Series for Selected Regions and Countries | 35 |
| Endnotes to Grain: World Markets and Trade | 54 |

The Foreign Agricultural Service (FAS) updates its production, supply and distribution (PSD) database for cotton, oilseeds, and grains at 12:00 p.m. on the day the *World Agricultural Supply and Demand Estimates* (WASDE) report is released. This circular is released by 12:15 p.m.

To download the tables in the publication, go to Production, Supply and Distribution Database (PSD Online): (<http://apps.fas.usda.gov/psdonline/psdHome.aspx>), scroll down to Reports, and Click the plus sign [+] next to Grains.

FAS Reports and Databases:

Current *World Markets and Trade* and *World Agricultural Production* Reports:

<http://apps.fas.usda.gov/psdonline/psdDataPublications.aspx>

Archives *World Markets and Trade* and *World Agricultural Production* Reports:

<http://usda.mannlib.cornell.edu/MannUsda/viewTaxonomy.do?taxonomyID=7>

Production, Supply and Distribution Database (PSD Online):

<http://apps.fas.usda.gov/psdonline/psdHome.aspx>

Global Agricultural Trade System (U.S. Exports and Imports):

<http://apps.fas.usda.gov/gats/default.aspx>

Export Sales Report:

<http://apps.fas.usda.gov/esrquery/>

Global Agricultural Information Network (Agricultural Attaché Reports):

<http://gain.fas.usda.gov/Pages/Default.aspx>

Other USDA Reports:

World Agricultural Supply and Demand Estimates (WASDE):

<http://www.usda.gov/oce/commodity/wasde/>

Economic Research Service:

<http://www.ers.usda.gov/topics/crops>

National Agricultural Statistics Service:

<http://www.nass.usda.gov/Publications/>

All Grain Summary Comparison
Million Metric Tons

| Marketing Year | Wheat | | | Rice, Milled | | | Corn | | | |
|-----------------------------|-----------|---------|---------|--------------|---------|---------|---------|---------|---------|-------|
| | 2013/14 | 2014/15 | 2015/16 | 2013/14 | 2014/15 | 2015/16 | 2013/14 | 2014/15 | 2015/16 | |
| Production | | | | | | | | | | |
| United States | (Jun-May) | 58.1 | 55.1 | 55.8 | 6.1 | 7.1 | 6.1 | 351.3 | 361.1 | 345.5 |
| Other | | 657.3 | 670.8 | 679.6 | 472.4 | 471.2 | 464.0 | 640.1 | 647.4 | 622.4 |
| World Total | | 715.4 | 725.9 | 735.4 | 478.5 | 478.3 | 470.1 | 991.4 | 1,008.5 | 967.9 |
| Domestic Consumption | | | | | | | | | | |
| United States | (Jun-May) | 34.3 | 31.6 | 32.2 | 4.0 | 4.2 | 3.9 | 293.0 | 301.9 | 301.5 |
| Other | | 656.5 | 670.0 | 682.0 | 474.2 | 475.0 | 478.1 | 649.3 | 659.1 | 672.6 |
| World Total | | 690.8 | 701.6 | 714.2 | 478.2 | 479.2 | 482.0 | 942.3 | 961.0 | 974.1 |
| Ending Stocks | | | | | | | | | | |
| United States | (Jun-May) | 16.1 | 20.5 | 25.6 | 1.0 | 1.6 | 1.3 | 31.3 | 44.0 | 45.8 |
| Other | | 177.9 | 192.3 | 206.4 | 106.5 | 102.3 | 88.4 | 143.3 | 163.2 | 163.1 |
| World Total | | 194.0 | 212.8 | 232.0 | 107.5 | 103.9 | 89.7 | 174.6 | 207.2 | 208.9 |
| TY Imports | | | | | | | | | | |
| United States | (Jun-May) | 4.8 | 4.0 | 3.2 | 0.8 | 0.8 | 0.8 | 0.7 | 0.8 | 1.0 |
| Other | | 155.4 | 154.3 | 156.7 | 40.2 | 38.0 | 39.2 | 124.4 | 121.2 | 123.8 |
| World Total | | 160.2 | 158.3 | 159.9 | 41.0 | 38.8 | 40.0 | 125.1 | 122.0 | 124.8 |
| TY Exports | | | | | | | | | | |
| United States | (Jun-May) | 31.5 | 22.8 | 22.0 | 3.0 | 3.5 | 3.3 | 50.7 | 46.8 | 43.5 |
| Other | | 130.9 | 138.5 | 140.3 | 40.4 | 38.5 | 38.8 | 79.5 | 81.0 | 84.8 |
| World Total | | 162.4 | 161.3 | 162.3 | 43.4 | 42.0 | 42.1 | 130.2 | 127.8 | 128.3 |

Note: Consumption in this table has not been adjusted for differences in marketing year imports and exports and therefore differs from global totals shown elsewhere. Marketing years for U.S. grains are: Wheat (Jun-May), Rice (Aug-Jul), Corn (Sep-Aug). 'Marketing Year' column is germane for U.S. wheat only.

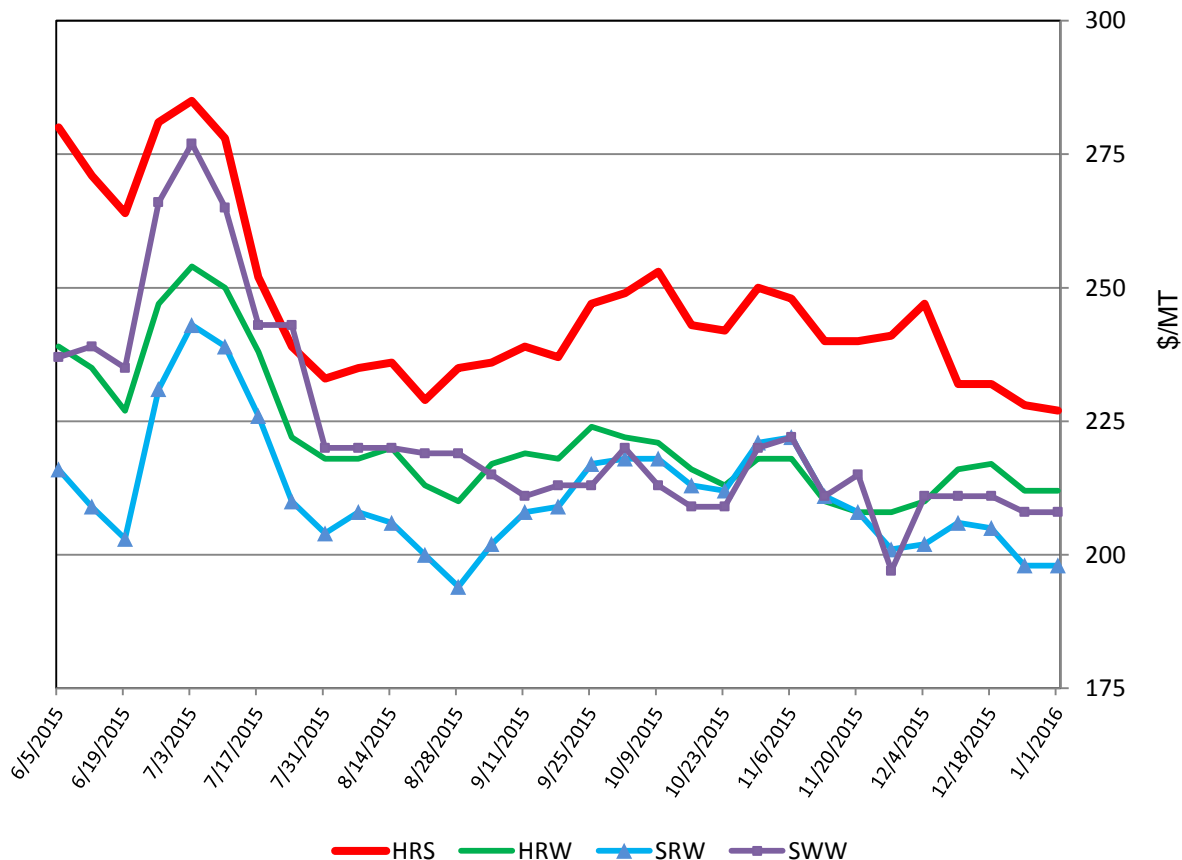
WHEAT: WORLD MARKETS AND TRADE

OVERVIEW

Global production in 2015/16 is up slightly to a new record based on larger crops in the EU, Pakistan, and Russia. Lower production in both Brazil and Uruguay are partly offsetting. Global trade is nearly unchanged. Brazil and Uruguay's exports are lowered on account of tightening supplies, while Pakistan, Paraguay, and Turkmenistan are up on reports of higher sales. U.S. imports are cut to reflect the slow pace of shipments from Canada. Both U.S. exports and the season-average farm price remain unchanged this month.

U.S. PRICES:

U.S. Weekly FOB Export Bids



Domestic: Prices for most U.S. wheat classes dropped slightly in December, with the exception of Hard Red Winter (HRW). HRW climbed \$2 to \$212/ton, while Hard Red Spring (HRS) dropped \$20 to \$227/ton. Soft White Wheat (SWW) slid \$3 to \$208/ton. Soft Red Winter (SRW) prices continued to decline, dropping \$4 to \$198/ton. Generally, prices remain depressed due to abundant global supplies.

TRADE CHANGES IN 2015/16

Selected Exporters

- **Brazil** is cut 200,000 tons to 1.3 million on a smaller crop and strong global competition for feed-quality wheat, especially from Argentina.
- **Pakistan** is up 100,000 tons to 700,000 on additional sales to Afghanistan.
- **Paraguay** is boosted 200,000 tons to 1.2 million on a stronger-than-expected pace.
- **Turkmenistan** is raised 200,000 tons from zero after reported sales to Afghanistan.
- **Uruguay** is lowered 250,000 tons to 700,000 owing to a smaller crop because of unfavorable weather conditions during harvest.

Selected Importers

- **Afghanistan** is raised 200,000 tons to 2.2 million based upon reported purchases from Turkmenistan.
- **South Africa** is up 100,000 tons to 1.8 million due to a smaller crop.
- **United States** is cut 150,000 tons to 3.2 million based on the slow pace of shipments from Canada.
- **Uruguay** is boosted 300,000 tons to 350,000 due to a poor domestic crop. So far, the imports are from Paraguay.

World Wheat, Flour, and Products Trade
July/June Year, Thousand Metric Tons

| | 2011/12 | 2012/13 | 2013/14 | 2014/15 | 2015/16 Dec | 2015/16 Jan |
|----------------------|---------|---------|---------|---------|----------------|----------------|
| TY Exports | | | | | | |
| Argentina | 11,951 | 7,450 | 1,675 | 4,200 | 6,500 | 6,500 |
| Australia | 23,031 | 21,269 | 18,339 | 16,575 | 17,500 | 17,500 |
| Brazil | 1,860 | 1,753 | 81 | 1,688 | 1,500 | 1,300 |
| Canada | 17,603 | 18,584 | 22,157 | 24,832 | 21,000 | 21,000 |
| European Union | 16,728 | 22,786 | 32,033 | 35,401 | 32,500 | 32,500 |
| Kazakhstan | 11,069 | 6,801 | 8,000 | 5,507 | 6,500 | 6,500 |
| Paraguay | 825 | 1,280 | 181 | 514 | 1,000 | 1,200 |
| Russia | 21,627 | 11,289 | 18,568 | 22,800 | 23,500 | 23,500 |
| Turkey | 3,678 | 3,583 | 4,293 | 4,136 | 4,000 | 4,000 |
| Ukraine | 5,436 | 7,190 | 9,755 | 11,269 | 15,500 | 15,500 |
| Others | 11,815 | 17,489 | 15,783 | 11,671 | 10,792 | 10,842 |
| Subtotal | 125,623 | 119,474 | 130,865 | 138,593 | 140,292 | 140,342 |
| United States | 28,142 | 27,734 | 31,518 | 22,752 | 22,000 | 22,000 |
| World Total | 153,765 | 147,208 | 162,383 | 161,345 | 162,292 | 162,342 |
| TY Imports | | | | | | |
| Afghanistan | 2,200 | 1,600 | 2,050 | 2,000 | 2,000 | 2,200 |
| Algeria | 6,500 | 6,484 | 7,484 | 7,257 | 7,700 | 7,700 |
| Bangladesh | 2,039 | 2,725 | 3,354 | 3,804 | 3,600 | 3,600 |
| Brazil | 7,053 | 7,547 | 7,061 | 5,869 | 6,300 | 6,300 |
| China | 2,933 | 2,960 | 6,773 | 1,926 | 2,000 | 2,000 |
| Egypt | 11,650 | 8,300 | 10,170 | 11,063 | 11,500 | 11,500 |
| Ethiopia | 1,550 | 1,344 | 670 | 1,100 | 1,900 | 1,900 |
| European Union | 7,362 | 5,276 | 3,974 | 5,973 | 6,000 | 6,000 |
| Indonesia | 6,457 | 7,146 | 7,392 | 7,478 | 8,100 | 8,100 |
| Iran | 2,400 | 5,600 | 6,600 | 5,006 | 4,500 | 4,500 |
| Iraq | 3,784 | 3,948 | 3,246 | 2,253 | 3,200 | 3,200 |
| Japan | 6,354 | 6,598 | 6,123 | 5,878 | 5,800 | 5,800 |
| Korea, South | 5,188 | 5,439 | 4,288 | 3,942 | 4,200 | 4,200 |
| Mexico | 5,020 | 3,823 | 4,636 | 4,446 | 4,400 | 4,400 |
| Morocco | 3,671 | 3,825 | 3,892 | 4,073 | 2,800 | 2,800 |
| Nigeria | 3,903 | 4,138 | 4,580 | 4,244 | 4,400 | 4,400 |
| Philippines | 4,075 | 3,645 | 3,482 | 5,099 | 4,800 | 4,800 |
| Saudi Arabia | 2,904 | 1,921 | 3,429 | 3,487 | 3,800 | 3,800 |
| Sudan | 2,360 | 1,793 | 2,664 | 2,632 | 2,800 | 2,800 |
| Thailand | 2,646 | 1,845 | 1,693 | 3,489 | 3,500 | 3,500 |
| Tunisia | 1,473 | 1,523 | 1,634 | 1,461 | 2,000 | 2,000 |
| Turkey | 4,413 | 3,312 | 4,154 | 5,960 | 3,800 | 3,800 |
| Uzbekistan | 2,698 | 1,863 | 2,224 | 2,230 | 2,400 | 2,400 |
| Vietnam | 2,711 | 1,671 | 2,158 | 2,296 | 2,600 | 2,600 |
| Yemen | 2,685 | 3,149 | 3,425 | 3,245 | 3,300 | 3,300 |
| Others | 44,842 | 43,808 | 48,269 | 48,133 | 48,661 | 49,061 |
| Subtotal | 148,871 | 141,283 | 155,425 | 154,344 | 156,061 | 156,661 |
| Unaccounted | 1,857 | 2,449 | 2,173 | 3,014 | 2,881 | 2,481 |
| United States | 3,037 | 3,476 | 4,785 | 3,987 | 3,350 | 3,200 |
| World Total | 153,765 | 147,208 | 162,383 | 161,345 | 162,292 | 162,342 |

TY=Trade Year, see Endnotes.

World Wheat Production, Consumption, and Stocks
Local Marketing Years, Thousand Metric Tons

| | 2011/12 | 2012/13 | 2013/14 | 2014/15 | 2015/16 Dec | 2015/16 Jan |
|--------------------------|----------------|----------------|----------------|----------------|----------------|----------------|
| Production | | | | | | |
| Argentina | 15,500 | 9,300 | 10,500 | 12,500 | 10,500 | 10,500 |
| Australia | 29,905 | 22,856 | 25,303 | 23,666 | 26,000 | 26,000 |
| Canada | 25,288 | 27,205 | 37,530 | 29,420 | 27,600 | 27,600 |
| China | 117,400 | 121,023 | 121,930 | 126,208 | 130,000 | 130,190 |
| Egypt | 8,400 | 8,500 | 8,250 | 8,300 | 8,100 | 8,100 |
| European Union | 138,182 | 133,949 | 144,583 | 156,525 | 157,663 | 157,977 |
| India | 86,874 | 94,882 | 93,506 | 95,850 | 88,940 | 88,940 |
| Iran | 12,400 | 13,800 | 14,500 | 13,000 | 14,000 | 14,000 |
| Kazakhstan | 22,732 | 9,841 | 13,941 | 12,996 | 14,000 | 14,000 |
| Morocco | 5,800 | 3,870 | 7,000 | 5,100 | 8,000 | 8,000 |
| Pakistan | 25,214 | 23,473 | 24,211 | 25,979 | 25,000 | 25,478 |
| Russia | 56,240 | 37,720 | 52,091 | 59,080 | 60,500 | 61,000 |
| Turkey | 18,800 | 16,000 | 18,750 | 15,250 | 19,500 | 19,500 |
| Ukraine | 22,324 | 15,761 | 22,278 | 24,750 | 27,000 | 27,000 |
| Uzbekistan | 6,300 | 6,700 | 6,800 | 7,150 | 7,200 | 7,200 |
| Others | 51,033 | 52,104 | 56,076 | 54,990 | 55,090 | 54,063 |
| Subtotal | 642,392 | 596,984 | 657,249 | 670,764 | 679,093 | 679,548 |
| United States | 54,244 | 61,298 | 58,105 | 55,147 | 55,840 | 55,840 |
| World Total | 696,636 | 658,282 | 715,354 | 725,911 | 734,933 | 735,388 |
| Total Consumption | | | | | | |
| Algeria | 8,950 | 9,450 | 9,850 | 10,050 | 10,250 | 10,250 |
| Brazil | 11,200 | 10,900 | 11,400 | 10,700 | 10,600 | 10,400 |
| Canada | 9,852 | 9,530 | 9,407 | 9,115 | 9,000 | 9,000 |
| China | 122,500 | 125,000 | 116,500 | 118,500 | 118,000 | 118,000 |
| Egypt | 18,600 | 18,700 | 18,500 | 19,100 | 19,600 | 19,600 |
| European Union | 127,234 | 119,250 | 117,300 | 123,500 | 125,750 | 125,750 |
| India | 81,408 | 83,824 | 93,848 | 93,130 | 93,940 | 93,940 |
| Indonesia | 6,250 | 6,950 | 7,165 | 7,365 | 7,950 | 7,950 |
| Iran | 15,200 | 16,000 | 17,000 | 17,500 | 18,000 | 18,000 |
| Morocco | 8,800 | 8,300 | 9,000 | 9,000 | 9,800 | 9,800 |
| Pakistan | 23,100 | 23,900 | 24,100 | 24,500 | 24,600 | 24,600 |
| Russia | 38,000 | 33,550 | 34,100 | 35,500 | 36,500 | 37,000 |
| Turkey | 18,100 | 17,650 | 17,750 | 17,500 | 18,000 | 18,000 |
| Ukraine | 14,950 | 11,400 | 11,500 | 12,000 | 12,500 | 12,500 |
| Uzbekistan | 7,800 | 8,000 | 8,400 | 8,900 | 9,300 | 9,300 |
| Others | 145,433 | 146,806 | 150,705 | 153,650 | 157,715 | 157,955 |
| Subtotal | 665,550 | 641,267 | 664,074 | 675,598 | 683,966 | 683,942 |
| United States | 31,962 | 37,768 | 34,287 | 31,554 | 33,177 | 32,197 |
| World Total | 697,512 | 679,035 | 698,361 | 707,152 | 717,143 | 716,139 |
| Ending Stocks | | | | | | |
| Australia | 7,051 | 4,663 | 4,557 | 4,273 | 4,998 | 4,998 |
| Canada | 5,932 | 5,137 | 10,436 | 7,108 | 5,693 | 5,693 |
| China | 55,946 | 53,960 | 65,274 | 74,105 | 87,105 | 87,295 |
| European Union | 13,522 | 10,711 | 9,935 | 13,532 | 18,945 | 19,259 |
| India | 19,950 | 24,200 | 17,830 | 17,200 | 11,900 | 11,900 |
| Iran | 825 | 5,086 | 7,221 | 7,821 | 7,321 | 7,321 |
| Russia | 10,899 | 4,952 | 5,175 | 6,282 | 7,132 | 7,132 |
| Others | 63,453 | 48,789 | 57,536 | 61,990 | 61,976 | 62,825 |
| Subtotal | 177,578 | 157,498 | 177,964 | 192,311 | 205,070 | 206,423 |
| United States | 20,211 | 19,538 | 16,065 | 20,477 | 24,794 | 25,614 |
| World Total | 197,789 | 177,036 | 194,029 | 212,788 | 229,864 | 232,037 |

Regional Wheat Imports, Production, Consumption, and Stocks

Thousand Metric Tons

| | 2011/12 | 2012/13 | 2013/14 | 2014/15 | Dec 2015/16 | Jan 2015/16 |
|-----------------------------|----------------|----------------|----------------|----------------|----------------|----------------|
| TY Imports | | | | | | |
| North America | 8,554 | 7,784 | 9,862 | 8,923 | 8,235 | 8,085 |
| Central America | 1,666 | 1,654 | 1,833 | 1,834 | 1,795 | 1,795 |
| South America | 13,779 | 14,422 | 14,831 | 13,181 | 13,715 | 14,015 |
| European Union - 28 | 7,362 | 5,276 | 3,974 | 5,973 | 6,000 | 6,000 |
| Other Europe | 1,930 | 1,703 | 1,921 | 1,748 | 1,895 | 1,895 |
| Former Soviet Union - 12 | 8,022 | 7,228 | 7,411 | 7,667 | 7,340 | 7,340 |
| Middle East | 23,066 | 24,163 | 28,342 | 26,928 | 26,050 | 26,050 |
| North Africa | 24,855 | 22,078 | 25,229 | 25,180 | 25,600 | 25,600 |
| Sub-Saharan Africa | 19,176 | 18,501 | 20,443 | 20,945 | 22,530 | 22,630 |
| East Asia | 16,865 | 17,352 | 19,463 | 14,120 | 14,410 | 14,410 |
| South Asia | 5,487 | 5,308 | 6,733 | 8,036 | 7,251 | 7,451 |
| Southeast Asia | 18,019 | 16,325 | 17,119 | 20,595 | 21,375 | 21,375 |
| Others | 3,127 | 2,965 | 3,049 | 3,201 | 3,215 | 3,215 |
| Total | 151,908 | 144,759 | 160,210 | 158,331 | 159,411 | 159,861 |
| Production | | | | | | |
| North America | 83,160 | 91,734 | 99,012 | 88,254 | 87,220 | 87,220 |
| South America | 26,131 | 18,011 | 19,762 | 22,727 | 21,141 | 20,041 |
| European Union - 28 | 138,182 | 133,949 | 144,583 | 156,525 | 157,663 | 157,977 |
| Other Europe | 3,597 | 3,431 | 4,059 | 3,856 | 4,132 | 4,132 |
| Former Soviet Union - 12 | 114,985 | 77,802 | 103,873 | 112,728 | 117,030 | 117,530 |
| Middle East | 39,285 | 36,884 | 41,708 | 35,117 | 40,855 | 40,855 |
| North Africa | 18,366 | 17,320 | 19,722 | 16,900 | 20,000 | 20,000 |
| Sub-Saharan Africa | 6,231 | 6,718 | 7,518 | 7,721 | 6,913 | 6,871 |
| East Asia | 118,775 | 122,490 | 123,248 | 127,648 | 131,298 | 131,488 |
| South Asia | 117,450 | 126,412 | 125,917 | 130,154 | 122,080 | 122,648 |
| Oceania | 30,288 | 23,345 | 25,751 | 24,080 | 26,400 | 26,425 |
| Others | 186 | 186 | 201 | 201 | 201 | 201 |
| Total | 696,636 | 658,282 | 715,354 | 725,911 | 734,933 | 735,388 |
| Domestic Consumption | | | | | | |
| North America | 49,414 | 53,923 | 50,344 | 47,519 | 49,177 | 48,197 |
| South America | 26,085 | 26,232 | 27,151 | 26,867 | 26,924 | 26,694 |
| European Union - 28 | 127,234 | 119,250 | 117,300 | 123,500 | 125,750 | 125,750 |
| Other Europe | 4,871 | 4,721 | 4,757 | 4,810 | 4,890 | 4,890 |
| Former Soviet Union - 12 | 79,970 | 71,725 | 72,750 | 75,860 | 77,625 | 78,305 |
| Middle East | 56,723 | 56,636 | 58,717 | 58,112 | 60,095 | 60,095 |
| North Africa | 40,927 | 41,421 | 42,424 | 42,676 | 44,325 | 44,325 |
| Sub-Saharan Africa | 23,260 | 23,994 | 26,659 | 27,149 | 28,045 | 28,045 |
| East Asia | 137,057 | 140,072 | 130,321 | 131,287 | 130,851 | 130,851 |
| South Asia | 115,930 | 121,007 | 132,041 | 132,333 | 133,926 | 134,016 |
| Southeast Asia | 16,665 | 16,520 | 16,574 | 19,030 | 20,680 | 20,680 |
| Oceania | 7,824 | 8,111 | 8,280 | 8,869 | 8,800 | 8,800 |
| Others | 3,379 | 3,366 | 3,494 | 3,552 | 3,594 | 3,594 |
| Total | 689,339 | 686,978 | 690,812 | 701,564 | 714,682 | 714,242 |
| Ending Stocks | | | | | | |
| North America | 26,718 | 24,950 | 26,817 | 28,080 | 31,062 | 31,882 |
| South America | 4,203 | 3,517 | 6,723 | 6,515 | 4,879 | 4,626 |
| European Union - 28 | 13,522 | 10,711 | 9,935 | 13,532 | 18,945 | 19,259 |
| Other Europe | 1,458 | 1,149 | 1,103 | 1,242 | 1,304 | 1,304 |
| Former Soviet Union - 12 | 26,373 | 14,287 | 15,674 | 19,995 | 20,298 | 20,205 |
| Middle East | 12,193 | 13,798 | 18,275 | 17,877 | 19,357 | 19,357 |
| North Africa | 14,094 | 11,487 | 13,550 | 12,347 | 12,972 | 12,972 |
| Sub-Saharan Africa | 2,401 | 2,486 | 2,957 | 3,195 | 3,698 | 3,756 |
| East Asia | 59,235 | 57,509 | 68,487 | 77,632 | 90,954 | 91,144 |
| South Asia | 25,106 | 28,004 | 21,684 | 23,096 | 16,625 | 17,724 |
| Southeast Asia | 4,678 | 3,814 | 3,582 | 4,295 | 4,140 | 4,140 |
| Oceania | 7,436 | 4,983 | 4,875 | 4,569 | 5,271 | 5,309 |
| Others | 372 | 341 | 367 | 413 | 359 | 359 |
| Total | 197,789 | 177,036 | 194,029 | 212,788 | 229,864 | 232,037 |

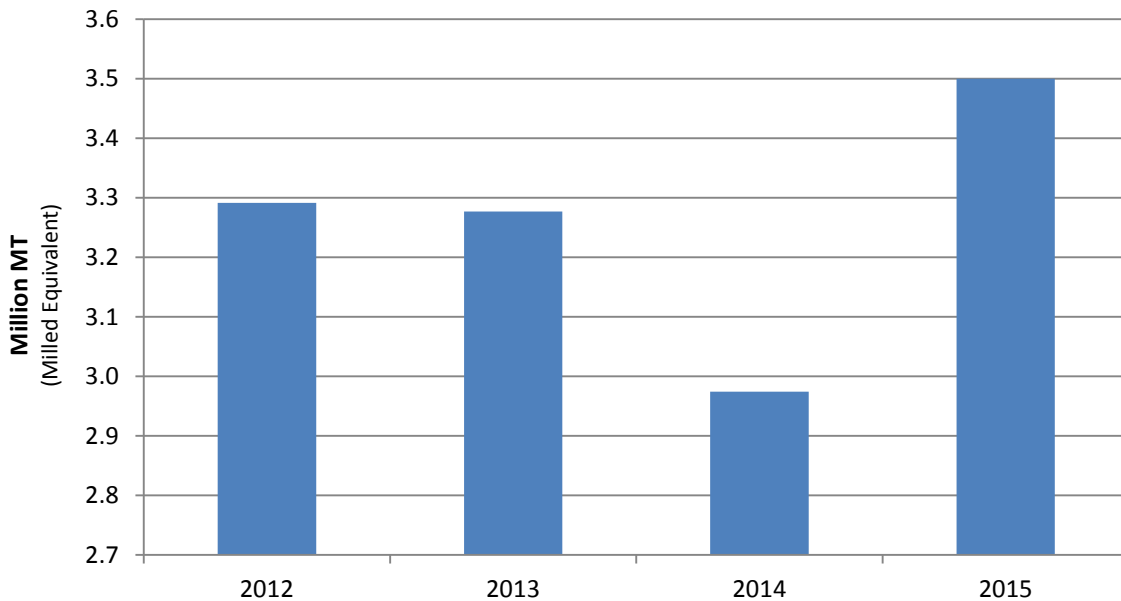
NOTES: Regional definitions appear on last page of this circular. Imports are reported on a trade year basis. All other data are reported using local marketing years.

RICE: WORLD MARKETS AND TRADE

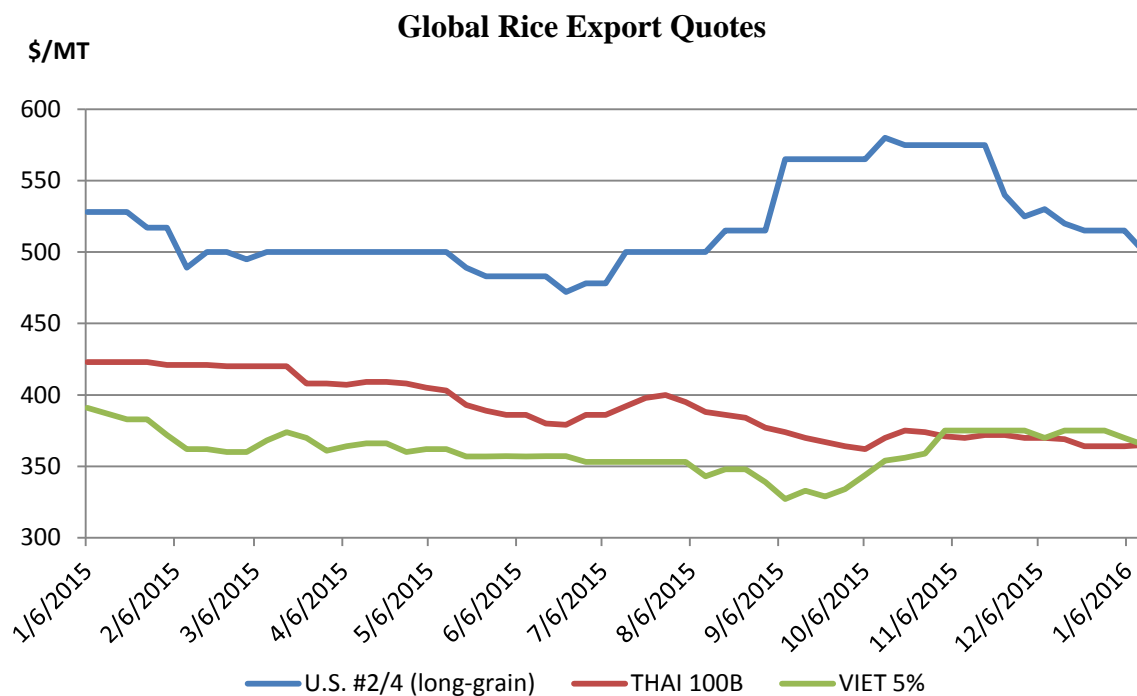
OVERVIEW

Global production for 2015/16 is up from last month due to larger crops in China, the Philippines, and Mali, but remains at its lowest level in 4 years. Trade is revised up due to rising demand primarily in Southeast Asia, as importing countries boost inventories. Nonetheless, global stocks are forecast 14% percent lower than a year ago. U.S. exports are raised.

Strong Rebound for U.S. Rice Exports



U.S. 2015 rice exports are raised 18 percent from the prior year to 3.5 million tons, the highest in 4 years, on strong shipments to Latin America. Since August, U.S. exports have soared. Higher shipments to Colombia, Mexico, Haiti, and Central America more than offset lower exports to Middle Eastern and African destinations such as Turkey, Iraq, and Ghana. Demand for U.S. rice is expected to remain relatively strong to Western Hemisphere markets in 2016.



After holding a \$200/ton premium over Thai and Viet quotes in October, U.S. quotes slid 6 percent over the past month to \$500/ton, narrowing the spread. Asian quotes declined slightly to \$365/ton as global demand remains weak. Viet quotes are typically at a discount to Thai quotes. However, over the past couple of months they have remained at or above Thai quotes, reflecting tightness in the Vietnamese market prior to the coming harvest.

SELECTED TRADE CHANGES for 2016

- **Indonesia's** imports are boosted 400,000 tons to 2.0 million based on the timing of previous sales and the government procurement agency's intention to seek further imports.
- **Pakistan's** exports are elevated 100,000 tons to a record 4.6 million on improved trade prospects to Asian markets.
- **Philippines'** imports are raised 200,000 tons to 2.0 million reflecting government commitments to further boost stocks.
- **Thailand's** exports are lifted 300,000 tons to 10.3 million on robust demand from Southeast Asian importers.
- **Vietnam's** exports are raised 200,000 tons to 7.3 million on expected continued strong demand from the Philippines and Indonesia.

SELECTED TRADE CHANGES for 2015

- **China's** exports are lowered 100,000 tons to 300,000 on smaller shipments to South Korea.
- **Burma's** exports are cut 250,000 tons to 1.8 million on slower trade to China in recent months.
- **European Union's** imports are raised 170,000 tons to 1.8 million on higher shipments from India and Thailand.
- **India's** exports are slashed 500,000 tons to 11.0 million on reduced shipments to West Africa and the Middle East.
- **Iran's** imports are down 200,000 tons to 1.3 million on the pace of trade.
- **Indonesia's** imports are trimmed 300,000 tons to 1.1 million on delayed departure of shipments from Southeast Asian suppliers.
- **Nigeria's** imports are cut 500,000 tons to 3.0 million reflecting restrictive government policies on foreign exchange.
- **Thailand's** exports are boosted 200,000 tons to 9.2 million on the pace of shipments.
- **Vietnam's** exports are up 200,000 tons to 6.5 million on trade to date.

World Rice Trade
January/December Year, Thousand Metric Tons

| | 2011/12 | 2012/13 | 2013/14 | 2014/15 | 2015/16 Dec | 2015/16 Jan |
|----------------------|---------------|---------------|---------------|---------------|----------------|----------------|
| TY Exports | | | | | | |
| Argentina | 608 | 526 | 494 | 325 | 480 | 480 |
| Brazil | 1,105 | 830 | 852 | 850 | 800 | 800 |
| Burma | 1,357 | 1,163 | 1,688 | 1,750 | 1,800 | 1,800 |
| Cambodia | 900 | 1,075 | 1,000 | 1,100 | 800 | 800 |
| China | 267 | 447 | 393 | 300 | 400 | 450 |
| Egypt | 600 | 700 | 600 | 250 | 400 | 400 |
| European Union | 194 | 203 | 284 | 260 | 260 | 270 |
| Guyana | 265 | 346 | 502 | 536 | 520 | 520 |
| India | 10,250 | 10,480 | 10,907 | 11,000 | 8,500 | 8,500 |
| Pakistan | 3,399 | 4,126 | 3,600 | 4,000 | 4,500 | 4,600 |
| Paraguay | 262 | 365 | 380 | 407 | 500 | 500 |
| Russia | 314 | 140 | 187 | 170 | 160 | 190 |
| Thailand | 6,945 | 6,722 | 10,969 | 9,200 | 10,000 | 10,300 |
| Uruguay | 1,056 | 939 | 957 | 718 | 950 | 950 |
| Vietnam | 7,717 | 6,700 | 6,325 | 6,500 | 7,100 | 7,300 |
| Others | 1,411 | 1,409 | 1,243 | 1,084 | 911 | 911 |
| Subtotal | 36,650 | 36,171 | 40,381 | 38,450 | 38,081 | 38,771 |
| United States | 3,298 | 3,295 | 2,998 | 3,500 | 3,250 | 3,325 |
| World Total | 39,948 | 39,466 | 43,379 | 41,950 | 41,331 | 42,096 |
| TY Imports | | | | | | |
| Angola | 360 | 430 | 496 | 450 | 450 | 450 |
| Bangladesh | 53 | 114 | 1,290 | 600 | 600 | 600 |
| Brazil | 732 | 712 | 586 | 350 | 700 | 700 |
| Cameroon | 450 | 550 | 610 | 525 | 530 | 530 |
| China | 2,900 | 3,483 | 4,168 | 4,500 | 4,700 | 4,700 |
| Cote d'Ivoire | 1,265 | 830 | 950 | 1,100 | 800 | 800 |
| Cuba | 330 | 413 | 377 | 550 | 500 | 500 |
| European Union | 1,313 | 1,375 | 1,556 | 1,750 | 1,500 | 1,500 |
| Ghana | 595 | 725 | 590 | 500 | 600 | 600 |
| Indonesia | 1,960 | 650 | 1,225 | 1,100 | 1,600 | 2,000 |
| Iran | 1,500 | 2,220 | 1,650 | 1,300 | 1,600 | 1,600 |
| Iraq | 1,478 | 1,294 | 1,080 | 1,100 | 1,200 | 1,200 |
| Japan | 650 | 690 | 669 | 650 | 700 | 700 |
| Kenya | 400 | 410 | 440 | 450 | 460 | 460 |
| Malaysia | 1,006 | 885 | 989 | 1,000 | 1,000 | 1,000 |
| Mexico | 680 | 746 | 658 | 700 | 700 | 700 |
| Mozambique | 445 | 500 | 500 | 480 | 500 | 500 |
| Nepal | 351 | 340 | 510 | 500 | 450 | 450 |
| Nigeria | 3,400 | 2,400 | 3,200 | 3,000 | 2,500 | 2,500 |
| Philippines | 1,500 | 1,000 | 1,800 | 1,850 | 1,800 | 2,000 |
| Saudi Arabia | 1,193 | 1,326 | 1,410 | 1,460 | 1,550 | 1,550 |
| Senegal | 1,200 | 1,075 | 1,200 | 1,100 | 1,100 | 1,100 |
| South Africa | 870 | 990 | 910 | 980 | 950 | 1,000 |
| United Arab Emirates | 430 | 440 | 450 | 460 | 460 | 460 |
| Venezuela | 375 | 500 | 480 | 500 | 500 | 500 |
| Others | 11,038 | 11,715 | 12,433 | 11,031 | 11,068 | 11,088 |
| Subtotal | 36,474 | 35,813 | 40,227 | 37,986 | 38,518 | 39,188 |
| Unaccounted | 2,834 | 2,978 | 2,397 | 3,199 | 2,013 | 2,133 |
| United States | 640 | 675 | 755 | 765 | 800 | 775 |
| World Total | 39,948 | 39,466 | 43,379 | 41,950 | 41,331 | 42,096 |

TY=Trade Year, see Endnotes. Note about dates: 2015/16 is calendar year 2015, 2014/15 is calendar year 2014, and so on.

World Rice Production, Consumption, and Stocks
Local Marketing Years, Thousand Metric Tons

| | 2011/12 | 2012/13 | 2013/14 | 2014/15 | 2015/16 Dec | 2015/16 Jan |
|---------------------------------|---------|---------|---------|---------|----------------|----------------|
| Milled Production | | | | | | |
| Bangladesh | 33,700 | 33,820 | 34,390 | 34,500 | 34,600 | 34,600 |
| Brazil | 7,888 | 8,037 | 8,300 | 8,465 | 8,000 | 8,000 |
| Burma | 11,473 | 11,715 | 11,957 | 12,600 | 12,200 | 12,200 |
| Cambodia | 4,268 | 4,670 | 4,725 | 4,700 | 4,350 | 4,350 |
| China | 140,700 | 143,000 | 142,530 | 144,560 | 145,500 | 145,770 |
| Egypt | 4,250 | 4,675 | 4,750 | 4,530 | 4,000 | 4,000 |
| India | 105,310 | 105,240 | 106,646 | 104,800 | 100,000 | 100,000 |
| Indonesia | 36,500 | 36,550 | 36,300 | 35,560 | 36,300 | 36,300 |
| Japan | 7,812 | 7,923 | 7,937 | 7,842 | 7,900 | 7,900 |
| Korea, South | 4,224 | 4,006 | 4,230 | 4,241 | 4,327 | 4,327 |
| Pakistan | 6,160 | 5,536 | 6,798 | 7,005 | 6,900 | 6,900 |
| Philippines | 10,710 | 11,428 | 11,858 | 11,915 | 11,250 | 11,500 |
| Sri Lanka | 3,138 | 2,675 | 2,840 | 2,850 | 3,300 | 3,300 |
| Thailand | 20,460 | 20,200 | 20,460 | 18,750 | 16,400 | 16,400 |
| Vietnam | 27,152 | 27,537 | 28,161 | 28,235 | 28,200 | 28,200 |
| Others | 38,020 | 39,144 | 40,537 | 40,592 | 40,034 | 40,265 |
| Subtotal | 461,765 | 466,156 | 472,419 | 471,145 | 463,261 | 464,012 |
| United States | 5,866 | 6,348 | 6,117 | 7,106 | 6,057 | 6,107 |
| World Total | 467,631 | 472,504 | 478,536 | 478,251 | 469,318 | 470,119 |
| Consumption and Residual | | | | | | |
| Bangladesh | 34,300 | 34,500 | 34,900 | 35,200 | 35,500 | 35,500 |
| Brazil | 7,928 | 7,850 | 7,900 | 7,900 | 7,900 | 7,900 |
| Burma | 10,200 | 10,400 | 10,450 | 10,650 | 10,500 | 10,650 |
| Cambodia | 3,400 | 3,550 | 3,650 | 3,700 | 3,600 | 3,600 |
| China | 139,600 | 144,000 | 146,300 | 147,600 | 150,000 | 150,000 |
| Egypt | 3,620 | 4,050 | 4,000 | 4,000 | 4,000 | 4,000 |
| India | 93,334 | 94,031 | 99,180 | 98,000 | 98,000 | 98,000 |
| Indonesia | 38,188 | 38,127 | 38,500 | 38,300 | 38,650 | 38,300 |
| Japan | 8,396 | 8,367 | 8,285 | 8,308 | 8,375 | 8,375 |
| Korea, South | 4,880 | 4,489 | 4,422 | 4,448 | 4,355 | 4,355 |
| Nepal | 3,677 | 3,353 | 3,811 | 3,600 | 3,550 | 3,550 |
| Nigeria | 5,600 | 5,300 | 5,800 | 5,800 | 5,850 | 5,850 |
| Philippines | 12,860 | 12,850 | 12,850 | 13,200 | 13,250 | 13,250 |
| Thailand | 10,400 | 10,600 | 10,875 | 11,500 | 11,800 | 11,500 |
| Vietnam | 19,650 | 21,900 | 22,000 | 21,800 | 22,000 | 21,900 |
| Others | 56,845 | 58,924 | 61,312 | 61,080 | 61,243 | 61,410 |
| Subtotal | 457,399 | 464,985 | 477,616 | 477,699 | 480,598 | 480,418 |
| United States | 3,492 | 3,779 | 3,977 | 4,155 | 4,043 | 3,853 |
| World Total | 460,891 | 468,764 | 481,593 | 481,854 | 484,641 | 484,271 |
| Ending Stocks | | | | | | |
| China | 45,023 | 46,826 | 46,811 | 47,660 | 47,460 | 47,680 |
| India | 25,100 | 25,440 | 22,757 | 17,686 | 11,186 | 11,186 |
| Indonesia | 7,403 | 6,476 | 5,501 | 3,861 | 3,411 | 3,861 |
| Japan | 2,735 | 2,857 | 3,108 | 3,212 | 3,362 | 3,362 |
| Korea, South | 755 | 780 | 899 | 1,140 | 1,580 | 1,580 |
| Philippines | 1,509 | 1,487 | 1,695 | 2,210 | 2,110 | 2,460 |
| Thailand | 9,330 | 12,808 | 11,724 | 10,074 | 4,974 | 4,974 |
| Others | 13,616 | 12,684 | 13,937 | 16,459 | 13,103 | 13,270 |
| Subtotal | 105,471 | 109,358 | 106,432 | 102,302 | 87,186 | 88,373 |
| United States | 1,303 | 1,156 | 1,025 | 1,552 | 1,232 | 1,329 |
| World Total | 106,774 | 110,514 | 107,457 | 103,854 | 88,418 | 89,702 |

Note: All data are reported on a milled basis.

Regional Rice Imports, Production, Consumption, and Stocks

Thousand Metric Tons

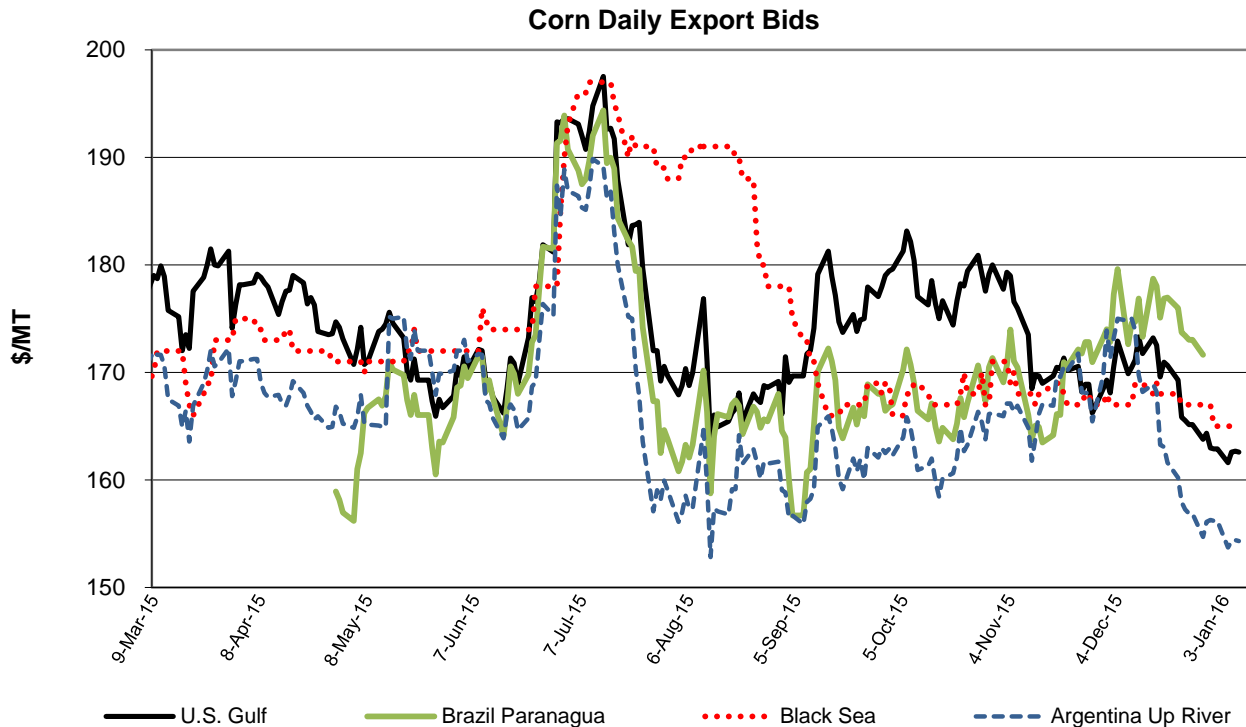
| | 2011/12 | 2012/13 | 2013/14 | 2014/15 | Dec 2015/16 | Jan 2015/16 |
|-----------------------------|----------------|----------------|----------------|----------------|----------------|----------------|
| TY Imports | | | | | | |
| North America | 1,664 | 1,776 | 1,771 | 1,815 | 1,860 | 1,835 |
| Caribbean | 845 | 971 | 901 | 1,125 | 1,075 | 1,075 |
| South America | 1,896 | 1,843 | 1,824 | 1,660 | 1,897 | 1,947 |
| Other Europe | 114 | 125 | 89 | 105 | 125 | 125 |
| Former Soviet Union - 12 | 456 | 537 | 554 | 416 | 496 | 476 |
| Middle East | 6,455 | 7,152 | 6,637 | 6,075 | 6,620 | 6,620 |
| North Africa | 777 | 487 | 480 | 490 | 485 | 485 |
| Sub-Saharan Africa | 12,135 | 11,740 | 12,934 | 11,790 | 11,390 | 11,370 |
| East Asia | 4,389 | 5,332 | 5,761 | 6,035 | 6,355 | 6,355 |
| South Asia | 737 | 722 | 2,581 | 1,570 | 1,220 | 1,220 |
| Southeast Asia | 5,488 | 3,606 | 5,020 | 5,115 | 5,540 | 6,140 |
| Others | 2,158 | 2,197 | 2,430 | 2,555 | 2,255 | 2,315 |
| Total | 37,114 | 36,488 | 40,982 | 38,751 | 39,318 | 39,963 |
| Production | | | | | | |
| North America | 5,979 | 6,479 | 6,248 | 7,285 | 6,192 | 6,242 |
| Caribbean | 1,002 | 974 | 1,040 | 1,065 | 987 | 976 |
| South America | 15,215 | 15,852 | 16,384 | 16,604 | 16,300 | 16,304 |
| European Union - 28 | 2,139 | 2,100 | 1,937 | 1,902 | 1,930 | 2,005 |
| Former Soviet Union - 12 | 1,294 | 1,294 | 1,205 | 1,185 | 1,205 | 1,225 |
| Middle East | 2,170 | 2,251 | 2,450 | 2,443 | 2,392 | 2,392 |
| North Africa | 4,289 | 4,704 | 4,789 | 4,530 | 4,000 | 4,000 |
| Sub-Saharan Africa | 12,997 | 13,376 | 14,006 | 14,378 | 14,229 | 14,372 |
| East Asia | 155,508 | 157,859 | 157,794 | 159,443 | 160,497 | 160,767 |
| South Asia | 152,027 | 150,631 | 154,490 | 152,756 | 148,420 | 148,420 |
| Southeast Asia | 113,649 | 115,490 | 116,867 | 115,436 | 112,261 | 112,511 |
| Others | 1,362 | 1,494 | 1,326 | 1,224 | 905 | 905 |
| Total | 467,631 | 472,504 | 478,536 | 478,251 | 469,318 | 470,119 |
| Domestic Consumption | | | | | | |
| North America | 4,668 | 4,977 | 5,202 | 5,379 | 5,273 | 5,083 |
| Central America | 1,156 | 1,171 | 1,193 | 1,243 | 1,217 | 1,247 |
| Caribbean | 1,977 | 1,964 | 1,973 | 2,131 | 2,078 | 2,078 |
| South America | 14,180 | 14,404 | 14,556 | 14,618 | 14,711 | 14,748 |
| European Union - 28 | 3,300 | 3,250 | 3,250 | 3,265 | 3,280 | 3,280 |
| Former Soviet Union - 12 | 1,422 | 1,559 | 1,535 | 1,424 | 1,476 | 1,446 |
| Middle East | 8,603 | 8,854 | 9,029 | 8,925 | 8,990 | 8,990 |
| North Africa | 4,045 | 4,572 | 4,480 | 4,460 | 4,460 | 4,460 |
| Sub-Saharan Africa | 23,811 | 24,777 | 26,643 | 26,023 | 26,155 | 26,285 |
| East Asia | 156,232 | 160,365 | 162,627 | 163,731 | 166,000 | 166,000 |
| South Asia | 137,167 | 137,462 | 143,946 | 143,391 | 143,620 | 143,620 |
| Southeast Asia | 99,148 | 102,008 | 103,102 | 104,131 | 104,861 | 104,261 |
| Others | 661 | 707 | 676 | 520 | 495 | 495 |
| Total | 456,370 | 466,070 | 478,212 | 479,241 | 482,616 | 481,993 |
| Ending Stocks | | | | | | |
| North America | 1,455 | 1,345 | 1,176 | 1,704 | 1,346 | 1,443 |
| Central America | 235 | 189 | 208 | 253 | 245 | 245 |
| Caribbean | 343 | 279 | 261 | 226 | 210 | 199 |
| South America | 1,606 | 1,491 | 1,788 | 2,107 | 1,796 | 1,925 |
| European Union - 28 | 1,146 | 1,188 | 1,163 | 1,231 | 1,108 | 1,176 |
| Middle East | 1,526 | 2,039 | 1,836 | 1,519 | 1,491 | 1,491 |
| North Africa | 487 | 427 | 602 | 916 | 541 | 541 |
| Sub-Saharan Africa | 2,085 | 2,297 | 1,820 | 2,492 | 1,602 | 1,619 |
| East Asia | 48,887 | 50,826 | 51,183 | 52,287 | 52,703 | 52,923 |
| South Asia | 27,461 | 26,819 | 25,629 | 21,610 | 14,622 | 14,525 |
| Southeast Asia | 21,369 | 23,197 | 21,395 | 19,215 | 12,544 | 13,405 |
| Oceania | 40 | 238 | 241 | 182 | 68 | 68 |
| Others | 134 | 179 | 155 | 112 | 142 | 142 |
| Total | 106,774 | 110,514 | 107,457 | 103,854 | 88,418 | 89,702 |

NOTES: Regional definitions appear on last page of this circular. Imports are reported on a trade year basis. All other data are reported using local marketing years.

COARSE GRAINS: WORLD MARKETS AND TRADE

OVERVIEW

World corn production for 2015/16 is lower, primarily driven by a large cut to South Africa's crop and reduced U.S. production. Global trade is up slightly, highlighted by larger imports for South Africa. Exports for Argentina, Brazil, Mexico, and Ukraine are boosted, more than offsetting lower exports for the United States and South Africa. The U.S. season-average farm price is lowered slightly.



PRICES

Since the release of the December WASDE report, price quotes from all major exporters have dropped. U.S. corn export prices have been pressured by weak foreign demand and a relative lack of competitiveness. Argentine quotes plunged (and are now the lowest) based on devaluation and the elimination of export taxes and quotas. Brazilian prices fell, but have been unavailable for over a week as sales slow seasonally.

TRADE CHANGES IN 2015/16

Selected Exporters

- **U.S. corn** is cut 1.0 million tons to 43.5 million, reflecting a sluggish pace of sales and shipments.
- **Argentine corn** is up 500,000 tons to 17.5 million on the recent fast pace of sales following devaluation and the elimination of export taxes and quotas.
- **Brazilian corn** is boosted 1.0 million tons to a new record 35.0 million based on stronger-than-expected shipments in December.
- **Indian corn** is lowered 300,000 tons to 700,000 on expectations that uncompetitive prices will keep supplies in-country.
- **Mexican corn** is doubled to 1.0 million tons on expectations of strong white corn shipments to South Africa.
- **Russian corn** is trimmed 200,000 tons to 3.8 million on a smaller crop.
- **South African corn** is halved to 500,000 tons on meager crop prospects. **Imports** are lifted 1.2 million tons to 1.7 million (a 23-year high).
- **Ukrainian corn** is up 500,000 tons to 15.5 million on greater exportable supplies.
- **Indian barley** is halved to 200,000 tons on a slower pace of shipments to Iran, a key market.

Selected Importers

- **U.S. corn** is up 250,000 tons to 1.0 million on trade to date.
 - **Chinese corn** is cut 500,000 tons to 2.5 million reflecting a dismal pace of trade to date.
 - **Mexican corn** is up 500,000 tons to 11.0 million on the faster-than-expected pace of purchases from the United States.
 - **Peruvian corn** is raised 200,000 tons to 2.7 million on a smaller crop.
 - **Saudi corn** is cut 500,000 tons to 3.5 million on a slower pace of trade to date.
-

World Coarse Grain Trade
October/September Year, Thousand Metric Tons

| | 2011/12 | 2012/13 | 2013/14 | 2014/15 | 2015/16 Dec | 2015/16 Jan |
|----------------------|---------|---------|---------|---------|----------------|----------------|
| TY Exports | | | | | | |
| Argentina | 22,308 | 29,497 | 16,630 | 21,001 | 20,205 | 20,705 |
| Australia | 7,279 | 6,410 | 7,003 | 7,271 | 7,425 | 7,425 |
| Brazil | 12,677 | 26,078 | 22,059 | 21,954 | 34,015 | 35,015 |
| Canada | 3,853 | 4,658 | 5,460 | 3,594 | 4,400 | 4,400 |
| European Union | 7,177 | 8,914 | 7,841 | 15,071 | 9,275 | 9,305 |
| India | 4,858 | 5,541 | 4,524 | 1,371 | 1,500 | 1,000 |
| Paraguay | 2,188 | 2,861 | 2,718 | 3,031 | 2,305 | 2,305 |
| Russia | 5,997 | 4,365 | 7,072 | 9,152 | 7,110 | 6,910 |
| Serbia | 2,345 | 628 | 1,755 | 2,967 | 1,725 | 1,725 |
| Ukraine | 17,447 | 15,527 | 24,125 | 24,208 | 18,680 | 19,230 |
| Others | 7,127 | 7,104 | 8,618 | 7,230 | 7,020 | 7,060 |
| Subtotal | 93,256 | 111,583 | 107,805 | 116,850 | 113,660 | 115,080 |
| United States | 40,106 | 20,586 | 56,772 | 56,340 | 52,435 | 51,435 |
| World Total | 133,362 | 132,169 | 164,577 | 173,190 | 166,095 | 166,515 |
| TY Imports | | | | | | |
| Algeria | 3,741 | 3,289 | 4,946 | 4,854 | 4,810 | 4,810 |
| Chile | 1,523 | 1,327 | 1,621 | 1,706 | 2,000 | 2,000 |
| China | 7,924 | 5,604 | 12,445 | 25,699 | 17,250 | 16,750 |
| Colombia | 4,103 | 4,090 | 4,795 | 4,747 | 4,830 | 4,830 |
| Dominican Republic | 1,054 | 1,046 | 1,011 | 1,199 | 1,100 | 1,100 |
| Egypt | 7,252 | 5,096 | 8,776 | 7,929 | 8,055 | 8,055 |
| European Union | 6,908 | 11,777 | 16,295 | 9,255 | 16,255 | 16,235 |
| Indonesia | 1,724 | 2,719 | 3,501 | 3,381 | 3,000 | 3,000 |
| Iran | 5,700 | 4,800 | 6,600 | 8,100 | 6,000 | 6,000 |
| Israel | 1,530 | 1,564 | 2,073 | 1,610 | 1,975 | 1,975 |
| Japan | 17,730 | 17,743 | 17,501 | 16,725 | 16,975 | 17,075 |
| Jordan | 1,311 | 1,406 | 1,672 | 1,459 | 1,575 | 1,575 |
| Kenya | 490 | 202 | 894 | 979 | 1,100 | 1,100 |
| Korea, South | 7,726 | 8,265 | 10,499 | 10,264 | 10,090 | 10,090 |
| Libya | 829 | 1,220 | 1,493 | 1,685 | 1,650 | 1,650 |
| Malaysia | 3,309 | 3,048 | 3,476 | 3,221 | 3,500 | 3,500 |
| Mexico | 12,819 | 7,627 | 11,317 | 11,570 | 11,225 | 11,750 |
| Morocco | 2,479 | 1,831 | 2,858 | 2,217 | 2,300 | 2,300 |
| Peru | 1,927 | 2,404 | 2,336 | 2,863 | 2,625 | 2,825 |
| Saudi Arabia | 10,485 | 12,390 | 11,331 | 11,129 | 11,525 | 11,025 |
| South Africa | 565 | 92 | 235 | 611 | 555 | 1,800 |
| Taiwan | 4,478 | 4,398 | 4,356 | 3,935 | 4,200 | 4,200 |
| Tunisia | 1,071 | 1,610 | 1,449 | 1,525 | 1,500 | 1,500 |
| Venezuela | 2,596 | 2,154 | 2,627 | 2,433 | 2,100 | 2,100 |
| Vietnam | 1,600 | 1,700 | 2,800 | 3,500 | 3,000 | 3,000 |
| Others | 16,142 | 15,890 | 17,930 | 19,793 | 17,355 | 17,340 |
| Subtotal | 127,016 | 123,292 | 154,837 | 162,389 | 156,550 | 157,585 |
| Unaccounted | 3,204 | 2,362 | 6,418 | 7,514 | 6,515 | 5,570 |
| United States | 3,142 | 6,515 | 3,322 | 3,287 | 3,030 | 3,360 |
| World Total | 133,362 | 132,169 | 164,577 | 173,190 | 166,095 | 166,515 |

TY=Trade Year, see Endnotes.

World Coarse Grains Production, Consumption, and Stocks
Local Marketing Years, Thousand Metric Tons

| | 2011/12 | 2012/13 | 2013/14 | 2014/15 | 2015/16 Dec | 2015/16 Jan |
|-----------------------------|------------------|------------------|------------------|------------------|------------------|------------------|
| Production | | | | | | |
| Argentina | 30,105 | 37,246 | 35,665 | 33,532 | 33,461 | 33,461 |
| Australia | 12,257 | 11,414 | 12,158 | 11,651 | 12,675 | 12,675 |
| Brazil | 75,884 | 84,253 | 82,603 | 87,603 | 84,083 | 84,083 |
| Canada | 22,921 | 24,445 | 28,745 | 21,992 | 25,660 | 25,660 |
| China | 198,635 | 212,192 | 225,408 | 222,750 | 231,500 | 231,580 |
| Ethiopia | 12,264 | 12,286 | 14,468 | 13,350 | 12,400 | 12,400 |
| European Union | 149,923 | 145,942 | 158,916 | 170,644 | 150,430 | 150,679 |
| India | 42,058 | 39,910 | 43,216 | 41,971 | 39,100 | 39,100 |
| Indonesia | 8,850 | 8,500 | 9,100 | 8,800 | 9,600 | 9,600 |
| Mexico | 25,689 | 28,881 | 32,020 | 32,390 | 31,325 | 31,325 |
| Nigeria | 17,421 | 18,573 | 19,292 | 19,015 | 17,950 | 17,950 |
| Russia | 33,077 | 28,658 | 35,735 | 40,386 | 39,000 | 37,320 |
| South Africa | 13,268 | 12,873 | 15,518 | 11,277 | 12,620 | 8,540 |
| Turkey | 11,299 | 10,595 | 13,075 | 9,475 | 14,075 | 14,075 |
| Ukraine | 33,476 | 29,528 | 40,022 | 39,389 | 32,825 | 33,250 |
| Others | 146,983 | 145,626 | 148,020 | 155,524 | 153,704 | 153,349 |
| Subtotal | 834,110 | 850,922 | 913,961 | 919,749 | 900,408 | 895,047 |
| United States | 322,451 | 285,311 | 367,089 | 377,234 | 368,156 | 366,902 |
| World Total | 1,156,561 | 1,136,233 | 1,281,050 | 1,296,983 | 1,268,564 | 1,261,949 |
| Domestic Consumption | | | | | | |
| Argentina | 10,510 | 12,050 | 13,695 | 14,232 | 14,976 | 14,776 |
| Brazil | 54,653 | 55,803 | 58,028 | 59,978 | 61,868 | 61,868 |
| Canada | 20,285 | 20,339 | 22,372 | 21,291 | 21,803 | 21,803 |
| China | 196,192 | 209,671 | 223,546 | 229,059 | 234,775 | 235,475 |
| Egypt | 12,736 | 12,910 | 14,080 | 14,809 | 15,458 | 15,458 |
| European Union | 151,460 | 153,095 | 164,105 | 163,270 | 161,445 | 161,445 |
| India | 37,650 | 35,075 | 37,600 | 40,000 | 39,050 | 39,150 |
| Indonesia | 10,500 | 10,900 | 11,900 | 12,200 | 12,700 | 12,700 |
| Iran | 10,320 | 10,520 | 11,320 | 12,020 | 12,720 | 12,720 |
| Japan | 17,990 | 18,030 | 17,640 | 16,975 | 17,125 | 17,225 |
| Mexico | 37,985 | 36,195 | 40,885 | 41,925 | 42,790 | 42,815 |
| Nigeria | 17,321 | 18,700 | 19,350 | 18,950 | 18,150 | 18,150 |
| Russia | 27,728 | 25,134 | 28,619 | 31,139 | 31,600 | 30,420 |
| Turkey | 11,755 | 13,005 | 13,430 | 13,080 | 14,130 | 14,130 |
| Ukraine | 15,559 | 14,661 | 15,977 | 15,230 | 13,905 | 13,930 |
| Others | 215,999 | 219,210 | 227,668 | 235,380 | 238,331 | 236,932 |
| Subtotal | 866,744 | 859,080 | 928,405 | 953,532 | 949,566 | 945,189 |
| United States | 288,857 | 275,537 | 305,048 | 311,347 | 315,323 | 315,070 |
| World Total | 1,155,601 | 1,134,617 | 1,233,453 | 1,264,879 | 1,264,889 | 1,260,259 |
| Ending Stocks | | | | | | |
| Brazil | 4,821 | 9,559 | 14,257 | 10,389 | 9,089 | 8,089 |
| Canada | 3,390 | 3,024 | 4,648 | 3,342 | 4,059 | 4,059 |
| China | 60,362 | 68,378 | 82,652 | 102,020 | 115,417 | 114,800 |
| European Union | 15,745 | 13,083 | 15,531 | 17,992 | 13,597 | 13,696 |
| Iran | 4,684 | 4,654 | 5,094 | 7,234 | 6,174 | 6,174 |
| Mexico | 1,857 | 1,628 | 3,583 | 4,807 | 4,067 | 4,067 |
| Saudi Arabia | 3,211 | 3,391 | 3,888 | 3,877 | 3,992 | 3,797 |
| Others | 39,889 | 36,146 | 47,025 | 46,486 | 40,687 | 39,690 |
| Subtotal | 133,959 | 139,863 | 176,678 | 196,147 | 197,082 | 194,372 |
| United States | 27,819 | 23,531 | 34,313 | 46,948 | 49,854 | 50,413 |
| World Total | 161,778 | 163,394 | 210,991 | 243,095 | 246,936 | 244,785 |

Regional Coarse Grains Imports, Production, Consumption, and Stocks

Thousand Metric Tons

| | 2011/12 | 2012/13 | 2013/14 | 2014/15 | Dec 2015/16 | Jan 2015/16 |
|-----------------------------|------------------|------------------|------------------|------------------|------------------|------------------|
| TY Imports | | | | | | |
| North America | 16,725 | 14,665 | 15,353 | 16,567 | 15,290 | 16,145 |
| Central America | 2,769 | 2,470 | 2,923 | 3,440 | 3,375 | 3,375 |
| Caribbean | 2,156 | 2,327 | 2,330 | 2,441 | 2,410 | 2,410 |
| South America | 11,967 | 11,812 | 13,182 | 13,347 | 13,150 | 13,350 |
| European Union - 28 | 6,908 | 11,777 | 16,295 | 9,255 | 16,255 | 16,235 |
| Former Soviet Union - 12 | 1,037 | 722 | 816 | 752 | 815 | 815 |
| Middle East | 23,515 | 25,076 | 26,613 | 27,765 | 24,840 | 24,340 |
| North Africa | 15,372 | 13,046 | 19,522 | 18,210 | 18,315 | 18,315 |
| Sub-Saharan Africa | 3,328 | 2,745 | 3,629 | 4,424 | 4,520 | 5,765 |
| East Asia | 38,040 | 36,163 | 44,880 | 56,680 | 48,615 | 48,215 |
| Southeast Asia | 7,317 | 8,058 | 11,287 | 11,443 | 10,680 | 10,680 |
| Others | 1,024 | 946 | 1,329 | 1,352 | 1,315 | 1,300 |
| Total | 130,158 | 129,807 | 158,159 | 165,676 | 159,580 | 160,945 |
| Production | | | | | | |
| North America | 371,061 | 338,637 | 427,854 | 431,616 | 425,141 | 423,887 |
| South America | 119,619 | 136,043 | 131,857 | 134,541 | 131,305 | 131,105 |
| European Union - 28 | 149,923 | 145,942 | 158,916 | 170,644 | 150,430 | 150,679 |
| Other Europe | 9,497 | 6,570 | 8,813 | 10,696 | 8,446 | 8,446 |
| Former Soviet Union - 12 | 78,648 | 68,222 | 87,749 | 91,773 | 83,231 | 81,976 |
| Middle East | 20,412 | 18,769 | 21,737 | 17,957 | 22,796 | 22,796 |
| North Africa | 11,142 | 10,126 | 11,647 | 11,192 | 12,532 | 12,532 |
| Sub-Saharan Africa | 99,469 | 103,590 | 103,848 | 105,158 | 102,170 | 98,090 |
| East Asia | 200,771 | 214,639 | 227,820 | 225,179 | 233,909 | 233,989 |
| South Asia | 50,175 | 47,642 | 51,986 | 50,512 | 47,958 | 47,754 |
| Southeast Asia | 28,379 | 29,138 | 30,968 | 30,863 | 32,503 | 32,503 |
| Oceania | 12,813 | 12,082 | 12,805 | 12,329 | 13,336 | 13,385 |
| Others | 4,652 | 4,833 | 5,050 | 4,523 | 4,807 | 4,807 |
| Total | 1,156,561 | 1,136,233 | 1,281,050 | 1,296,983 | 1,268,564 | 1,261,949 |
| Domestic Consumption | | | | | | |
| North America | 347,127 | 332,071 | 368,305 | 374,563 | 379,916 | 379,688 |
| South America | 86,910 | 89,864 | 94,535 | 97,262 | 100,467 | 100,192 |
| European Union - 28 | 151,460 | 153,095 | 164,105 | 163,270 | 161,445 | 161,445 |
| Other Europe | 8,375 | 7,100 | 7,702 | 7,969 | 8,045 | 8,030 |
| Former Soviet Union - 12 | 54,378 | 50,225 | 55,679 | 57,998 | 57,311 | 56,156 |
| Middle East | 41,186 | 43,027 | 45,890 | 45,367 | 47,931 | 47,631 |
| North Africa | 25,266 | 24,941 | 27,998 | 30,197 | 31,240 | 31,240 |
| Sub-Saharan Africa | 97,790 | 103,311 | 103,168 | 107,181 | 105,045 | 104,345 |
| East Asia | 228,717 | 243,025 | 257,770 | 262,597 | 268,546 | 269,346 |
| South Asia | 45,605 | 42,604 | 46,367 | 48,915 | 48,328 | 48,126 |
| Southeast Asia | 34,612 | 35,867 | 37,904 | 40,131 | 41,465 | 41,465 |
| Oceania | 6,518 | 6,132 | 5,765 | 5,272 | 5,926 | 5,924 |
| Others | 9,556 | 9,573 | 10,075 | 10,163 | 10,484 | 10,479 |
| Total | 1,137,500 | 1,140,835 | 1,225,263 | 1,250,885 | 1,266,149 | 1,264,067 |
| Ending Stocks | | | | | | |
| North America | 33,066 | 28,183 | 42,544 | 55,097 | 57,980 | 58,539 |
| South America | 9,544 | 15,409 | 21,129 | 15,885 | 14,103 | 12,853 |
| European Union - 28 | 15,745 | 13,083 | 15,531 | 17,992 | 13,597 | 13,696 |
| Other Europe | 1,024 | 603 | 766 | 1,200 | 842 | 786 |
| Former Soviet Union - 12 | 6,181 | 5,037 | 7,114 | 7,859 | 6,282 | 6,084 |
| Middle East | 10,547 | 10,059 | 11,817 | 13,064 | 12,748 | 12,549 |
| North Africa | 5,504 | 3,526 | 5,719 | 5,649 | 5,346 | 5,346 |
| Sub-Saharan Africa | 9,272 | 9,055 | 9,971 | 10,384 | 8,291 | 7,554 |
| East Asia | 63,392 | 71,035 | 85,982 | 105,238 | 118,638 | 118,021 |
| South Asia | 2,676 | 2,445 | 3,938 | 4,240 | 3,093 | 3,068 |
| Southeast Asia | 3,061 | 3,275 | 4,396 | 4,191 | 3,757 | 3,769 |
| Oceania | 978 | 915 | 1,134 | 1,268 | 1,038 | 1,409 |
| Others | 788 | 769 | 950 | 1,028 | 1,221 | 1,111 |
| Total | 161,778 | 163,394 | 210,991 | 243,095 | 246,936 | 244,785 |

NOTES: Regional definitions appear on last page of this circular. Imports are reported on a trade year basis. All other data are reported using local marketing years.

World Corn Trade
October/September Year, Thousand Metric Tons

| | 2011/12 | 2012/13 | 2013/14 | 2014/15 | 2015/16 Dec | 2015/16 Jan |
|----------------------|----------------|----------------|----------------|----------------|----------------|----------------|
| TY Exports | | | | | | |
| Argentina | 16,501 | 22,789 | 12,846 | 18,447 | 17,000 | 17,500 |
| Brazil | 12,674 | 26,044 | 22,041 | 21,909 | 34,000 | 35,000 |
| Burma | 200 | 550 | 700 | 850 | 900 | 900 |
| Canada | 494 | 1,813 | 1,917 | 395 | 1,000 | 1,000 |
| European Union | 3,287 | 2,193 | 2,405 | 4,030 | 1,000 | 1,000 |
| Mexico | 694 | 522 | 501 | 784 | 500 | 1,000 |
| Paraguay | 2,188 | 2,858 | 2,714 | 3,012 | 2,300 | 2,300 |
| Russia | 2,027 | 1,917 | 4,192 | 3,213 | 4,000 | 3,800 |
| Serbia | 2,331 | 601 | 1,736 | 2,964 | 1,700 | 1,700 |
| Ukraine | 15,157 | 12,726 | 20,004 | 19,661 | 15,000 | 15,500 |
| Others | 9,787 | 10,252 | 10,414 | 5,778 | 5,835 | 5,075 |
| Subtotal | 65,340 | 82,265 | 79,470 | 81,043 | 83,235 | 84,775 |
| United States | 38,342 | 18,262 | 50,684 | 46,773 | 44,500 | 43,500 |
| World Total | 103,682 | 100,527 | 130,154 | 127,816 | 127,735 | 128,275 |
| TY Imports | | | | | | |
| Algeria | 3,231 | 2,918 | 4,156 | 4,116 | 4,200 | 4,200 |
| Canada | 747 | 493 | 679 | 1,533 | 1,000 | 1,000 |
| Chile | 906 | 844 | 1,456 | 1,516 | 1,800 | 1,800 |
| China | 5,231 | 2,702 | 3,277 | 5,516 | 3,000 | 2,500 |
| Colombia | 3,209 | 3,266 | 4,436 | 4,496 | 4,500 | 4,500 |
| Cuba | 743 | 911 | 928 | 886 | 900 | 900 |
| Dominican Republic | 1,054 | 1,046 | 1,011 | 1,199 | 1,100 | 1,100 |
| Egypt | 7,154 | 5,059 | 8,726 | 7,826 | 8,000 | 8,000 |
| European Union | 6,113 | 11,362 | 15,952 | 8,756 | 16,000 | 16,000 |
| Indonesia | 1,724 | 2,719 | 3,501 | 3,381 | 3,000 | 3,000 |
| Iran | 4,000 | 3,700 | 5,500 | 6,200 | 4,500 | 4,500 |
| Israel | 1,221 | 1,224 | 1,652 | 1,296 | 1,600 | 1,600 |
| Japan | 14,892 | 14,412 | 15,121 | 14,656 | 14,700 | 14,700 |
| Kenya | 400 | 100 | 800 | 900 | 1,000 | 1,000 |
| Korea, South | 7,636 | 8,174 | 10,406 | 10,179 | 10,000 | 10,000 |
| Malaysia | 3,309 | 3,048 | 3,476 | 3,221 | 3,500 | 3,500 |
| Mexico | 11,172 | 5,676 | 10,954 | 11,269 | 10,500 | 11,000 |
| Morocco | 1,943 | 1,684 | 2,349 | 1,941 | 2,100 | 2,100 |
| Peru | 1,772 | 2,254 | 2,232 | 2,741 | 2,500 | 2,700 |
| Saudi Arabia | 1,816 | 2,063 | 2,684 | 2,904 | 4,000 | 3,500 |
| South Africa | 424 | 0 | 79 | 469 | 500 | 1,700 |
| Taiwan | 4,341 | 4,232 | 4,189 | 3,821 | 4,100 | 4,100 |
| Tunisia | 853 | 846 | 993 | 1,042 | 1,100 | 1,100 |
| Venezuela | 2,596 | 2,154 | 2,626 | 2,433 | 2,100 | 2,100 |
| Vietnam | 1,600 | 1,700 | 2,800 | 3,500 | 3,000 | 3,000 |
| Others | 12,601 | 12,295 | 14,408 | 15,435 | 14,150 | 14,150 |
| Subtotal | 100,688 | 94,882 | 124,391 | 121,232 | 122,850 | 123,750 |
| Unaccounted | 2,229 | 1,380 | 5,036 | 5,775 | 4,135 | 3,525 |
| United States | 765 | 4,265 | 727 | 809 | 750 | 1,000 |
| World Total | 103,682 | 100,527 | 130,154 | 127,816 | 127,735 | 128,275 |

TY=Trade Year, see Endnotes.

World Corn Production, Consumption, and Stocks
Local Marketing Years, Thousand Metric Tons

| | 2011/12 | 2012/13 | 2013/14 | 2014/15 | 2015/16 Dec | 2015/16 Jan |
|--------------------------|---------|---------|---------|-----------|----------------|----------------|
| Production | | | | | | |
| Argentina | 21,000 | 27,000 | 26,000 | 26,500 | 25,600 | 25,600 |
| Brazil | 73,000 | 81,500 | 80,000 | 85,000 | 81,500 | 81,500 |
| Canada | 11,359 | 13,060 | 14,194 | 11,487 | 13,600 | 13,600 |
| China | 192,780 | 205,614 | 218,490 | 215,646 | 225,000 | 224,580 |
| Egypt | 5,500 | 5,800 | 5,800 | 5,960 | 6,000 | 6,000 |
| Ethiopia | 6,069 | 6,158 | 7,451 | 6,500 | 6,000 | 6,000 |
| European Union | 68,123 | 58,896 | 64,635 | 75,793 | 57,751 | 57,751 |
| India | 21,759 | 22,258 | 24,259 | 23,670 | 21,000 | 21,000 |
| Indonesia | 8,850 | 8,500 | 9,100 | 8,800 | 9,600 | 9,600 |
| Mexico | 18,726 | 21,591 | 22,880 | 25,480 | 23,500 | 23,500 |
| Nigeria | 9,250 | 7,630 | 7,700 | 7,515 | 7,000 | 7,000 |
| Philippines | 7,130 | 7,261 | 7,532 | 7,671 | 7,800 | 7,800 |
| Russia | 6,962 | 8,213 | 11,635 | 11,325 | 13,500 | 13,000 |
| South Africa | 12,759 | 12,365 | 14,925 | 10,800 | 12,000 | 8,000 |
| Ukraine | 22,838 | 20,922 | 30,900 | 28,450 | 23,000 | 23,500 |
| Others | 90,878 | 89,566 | 94,619 | 96,834 | 94,200 | 94,014 |
| Subtotal | 576,983 | 596,334 | 640,120 | 647,431 | 627,051 | 622,445 |
| United States | 312,789 | 273,192 | 351,272 | 361,091 | 346,815 | 345,486 |
| World Total | 889,772 | 869,526 | 991,392 | 1,008,522 | 973,866 | 967,931 |
| Total Consumption | | | | | | |
| Argentina | 7,000 | 7,900 | 8,800 | 9,300 | 10,000 | 9,800 |
| Brazil | 51,500 | 52,500 | 55,000 | 57,000 | 59,000 | 59,000 |
| Canada | 11,636 | 11,605 | 12,700 | 12,820 | 13,350 | 13,350 |
| China | 188,000 | 200,000 | 208,000 | 202,000 | 214,000 | 214,000 |
| Egypt | 11,700 | 12,000 | 13,200 | 13,900 | 14,500 | 14,500 |
| European Union | 69,500 | 69,600 | 76,500 | 78,000 | 76,000 | 76,000 |
| India | 17,200 | 17,500 | 19,600 | 22,000 | 21,400 | 21,400 |
| Indonesia | 10,500 | 10,900 | 11,900 | 12,200 | 12,700 | 12,700 |
| Japan | 14,900 | 14,500 | 15,100 | 14,700 | 14,700 | 14,700 |
| Korea, South | 7,815 | 8,481 | 9,891 | 10,200 | 10,100 | 10,100 |
| Mexico | 29,000 | 27,000 | 31,700 | 34,450 | 34,300 | 34,300 |
| Philippines | 7,400 | 7,400 | 8,000 | 8,500 | 8,600 | 8,600 |
| Russia | 4,700 | 6,400 | 7,500 | 8,100 | 9,300 | 9,200 |
| South Africa | 10,700 | 11,000 | 11,500 | 11,200 | 11,400 | 10,700 |
| Ukraine | 7,800 | 8,100 | 9,700 | 9,400 | 8,400 | 8,400 |
| Others | 140,994 | 141,471 | 150,227 | 155,379 | 156,338 | 155,843 |
| Subtotal | 607,091 | 601,711 | 656,473 | 674,015 | 668,438 | 664,709 |
| United States | 277,961 | 262,973 | 292,965 | 301,854 | 301,766 | 301,512 |
| World Total | 885,052 | 864,684 | 949,438 | 975,869 | 970,204 | 966,221 |
| Ending Stocks | | | | | | |
| Brazil | 4,212 | 9,150 | 13,972 | 10,072 | 8,672 | 7,672 |
| China | 59,335 | 67,570 | 81,315 | 100,464 | 114,414 | 113,494 |
| Egypt | 2,220 | 1,076 | 2,398 | 2,274 | 1,764 | 1,764 |
| European Union | 6,682 | 5,147 | 6,829 | 9,348 | 6,099 | 6,099 |
| Iran | 3,336 | 3,236 | 4,476 | 5,816 | 4,956 | 4,956 |
| Korea, South | 1,489 | 1,265 | 1,860 | 1,921 | 1,898 | 1,898 |
| Mexico | 1,316 | 1,061 | 2,694 | 4,209 | 3,409 | 3,409 |
| Others | 24,067 | 23,257 | 29,739 | 29,150 | 25,306 | 23,864 |
| Subtotal | 102,657 | 111,762 | 143,283 | 163,254 | 166,518 | 163,156 |
| United States | 25,122 | 20,859 | 31,292 | 43,974 | 45,336 | 45,782 |
| World Total | 127,779 | 132,621 | 174,575 | 207,228 | 211,854 | 208,938 |

Regional Corn Imports, Production, Consumption, and Stocks

Thousand Metric Tons

| | 2011/12 | 2012/13 | 2013/14 | 2014/15 | Dec 2015/16 | Jan 2015/16 |
|-----------------------------|----------------|----------------|----------------|------------------|----------------|----------------|
| TY Imports | | | | | | |
| North America | 12,684 | 10,434 | 12,360 | 13,611 | 12,250 | 13,000 |
| Central America | 2,766 | 2,470 | 2,922 | 3,440 | 3,375 | 3,375 |
| South America | 9,886 | 9,651 | 12,027 | 12,032 | 11,850 | 12,050 |
| European Union - 28 | 6,113 | 11,362 | 15,952 | 8,756 | 16,000 | 16,000 |
| Former Soviet Union - 12 | 327 | 321 | 447 | 470 | 490 | 490 |
| Middle East | 10,853 | 10,942 | 13,812 | 15,198 | 13,500 | 13,000 |
| North Africa | 13,827 | 11,154 | 17,036 | 15,609 | 16,150 | 16,150 |
| Sub-Saharan Africa | 2,660 | 2,096 | 2,937 | 3,735 | 4,025 | 5,225 |
| East Asia | 32,282 | 29,673 | 33,072 | 34,229 | 31,900 | 31,400 |
| Southeast Asia | 7,304 | 8,040 | 11,246 | 11,432 | 10,665 | 10,665 |
| Caribbean | 2,156 | 2,327 | 2,330 | 2,441 | 2,410 | 2,410 |
| Others | 595 | 677 | 977 | 1,088 | 985 | 985 |
| Total | 101,453 | 99,147 | 125,118 | 122,041 | 123,600 | 124,750 |
| Production | | | | | | |
| North America | 342,874 | 307,843 | 388,346 | 398,058 | 383,915 | 382,586 |
| South America | 105,578 | 120,997 | 117,456 | 122,979 | 118,675 | 118,475 |
| European Union - 28 | 68,123 | 58,896 | 64,635 | 75,793 | 57,751 | 57,751 |
| Other Europe | 7,810 | 4,915 | 7,210 | 8,945 | 6,676 | 6,676 |
| Former Soviet Union - 12 | 34,121 | 32,310 | 46,916 | 43,725 | 39,910 | 39,910 |
| Middle East | 7,164 | 7,480 | 8,138 | 7,853 | 9,043 | 9,043 |
| North Africa | 5,722 | 5,891 | 6,001 | 6,161 | 6,201 | 6,201 |
| Sub-Saharan Africa | 62,102 | 60,564 | 64,296 | 60,868 | 58,851 | 54,851 |
| East Asia | 194,585 | 207,760 | 220,595 | 217,767 | 227,113 | 226,693 |
| South Asia | 28,646 | 28,857 | 31,865 | 31,035 | 28,470 | 28,470 |
| Central America | 3,602 | 3,743 | 3,893 | 3,366 | 3,650 | 3,650 |
| Southeast Asia | 28,138 | 28,893 | 30,721 | 30,618 | 32,258 | 32,258 |
| Others | 1,307 | 1,377 | 1,320 | 1,354 | 1,353 | 1,367 |
| Total | 889,772 | 869,526 | 991,392 | 1,008,522 | 973,866 | 967,931 |
| Domestic Consumption | | | | | | |
| North America | 318,597 | 301,578 | 337,365 | 349,124 | 349,416 | 349,162 |
| South America | 76,491 | 79,031 | 83,666 | 86,756 | 89,655 | 89,380 |
| European Union - 28 | 69,500 | 69,600 | 76,500 | 78,000 | 76,000 | 76,000 |
| Other Europe | 6,392 | 5,194 | 5,847 | 6,022 | 6,025 | 6,010 |
| Former Soviet Union - 12 | 16,420 | 18,080 | 21,131 | 21,401 | 21,605 | 21,505 |
| Middle East | 17,585 | 18,710 | 19,785 | 21,835 | 22,735 | 22,435 |
| North Africa | 18,000 | 18,450 | 20,800 | 22,100 | 23,100 | 23,100 |
| Sub-Saharan Africa | 60,348 | 60,033 | 62,828 | 62,795 | 61,088 | 60,388 |
| East Asia | 217,047 | 229,434 | 239,295 | 232,927 | 245,025 | 245,025 |
| South Asia | 23,875 | 23,880 | 27,182 | 29,705 | 29,270 | 29,170 |
| Southeast Asia | 34,357 | 35,609 | 37,653 | 39,849 | 41,210 | 41,210 |
| Central America | 6,350 | 6,175 | 6,650 | 6,685 | 6,935 | 6,935 |
| Others | 3,344 | 3,556 | 3,581 | 3,804 | 3,790 | 3,785 |
| Total | 868,306 | 869,330 | 942,283 | 961,003 | 975,854 | 974,105 |
| Ending Stocks | | | | | | |
| North America | 27,803 | 23,469 | 35,586 | 49,585 | 50,397 | 50,843 |
| South America | 8,190 | 13,479 | 18,758 | 13,979 | 12,275 | 11,084 |
| European Union - 28 | 6,682 | 5,147 | 6,829 | 9,348 | 6,099 | 6,099 |
| Other Europe | 771 | 353 | 517 | 961 | 603 | 542 |
| Former Soviet Union - 12 | 2,441 | 2,003 | 3,421 | 3,068 | 2,613 | 2,533 |
| Middle East | 4,510 | 4,228 | 5,957 | 7,071 | 6,633 | 6,434 |
| North Africa | 2,994 | 1,719 | 3,168 | 3,336 | 2,577 | 2,577 |
| Sub-Saharan Africa | 7,058 | 6,631 | 7,966 | 7,992 | 6,250 | 5,490 |
| East Asia | 61,841 | 69,734 | 84,134 | 103,205 | 117,143 | 116,223 |
| South Asia | 1,628 | 1,780 | 2,842 | 3,384 | 2,230 | 2,159 |
| Southeast Asia | 3,058 | 3,270 | 4,390 | 4,185 | 3,751 | 3,763 |
| Central America | 503 | 474 | 610 | 572 | 754 | 642 |
| Others | 300 | 334 | 397 | 542 | 529 | 549 |
| Total | 127,779 | 132,621 | 174,575 | 207,228 | 211,854 | 208,938 |

NOTES: Regional definitions appear on last page of this circular. Imports are reported on a trade year basis. All other data are reported using local marketing years.

World Barley Trade
October/September Year, Thousand Metric Tons

| | 2011/12 | 2012/13 | 2013/14 | 2014/15 | 2015/16 Dec | 2015/16 Jan |
|----------------------|---------------|---------------|---------------|---------------|----------------|----------------|
| TY Exports | | | | | | |
| Argentina | 3,631 | 3,647 | 2,829 | 1,598 | 2,000 | 2,000 |
| Australia | 5,819 | 4,621 | 6,262 | 5,268 | 6,000 | 6,000 |
| Canada | 1,437 | 1,316 | 1,714 | 1,384 | 1,700 | 1,700 |
| European Union | 3,646 | 6,473 | 4,926 | 10,642 | 8,000 | 8,000 |
| India | 52 | 542 | 546 | 97 | 400 | 200 |
| Kazakhstan | 659 | 151 | 501 | 476 | 500 | 500 |
| Russia | 3,668 | 2,366 | 2,791 | 5,803 | 3,000 | 3,000 |
| Serbia | 14 | 26 | 18 | 3 | 25 | 25 |
| Turkey | 103 | 0 | 9 | 10 | 25 | 25 |
| Ukraine | 2,166 | 2,659 | 3,827 | 4,332 | 3,500 | 3,600 |
| Others | 22 | 166 | 69 | 163 | 35 | 35 |
| Subtotal | 21,217 | 21,967 | 23,492 | 29,776 | 25,185 | 25,085 |
| United States | 179 | 163 | 336 | 292 | 300 | 300 |
| World Total | 21,396 | 22,130 | 23,828 | 30,068 | 25,485 | 25,385 |
| TY Imports | | | | | | |
| Algeria | 501 | 364 | 778 | 723 | 600 | 600 |
| Azerbaijan | 49 | 14 | 78 | 125 | 100 | 100 |
| Brazil | 274 | 369 | 338 | 489 | 400 | 400 |
| Chile | 73 | 79 | 56 | 93 | 100 | 100 |
| China | 2,541 | 2,184 | 4,891 | 9,859 | 7,000 | 7,000 |
| Colombia | 301 | 232 | 253 | 249 | 275 | 275 |
| European Union | 364 | 52 | 58 | 268 | 100 | 100 |
| Iran | 1,700 | 1,100 | 1,100 | 1,900 | 1,500 | 1,500 |
| Israel | 276 | 244 | 304 | 278 | 325 | 325 |
| Japan | 1,257 | 1,356 | 1,294 | 1,097 | 1,200 | 1,300 |
| Jordan | 736 | 831 | 997 | 759 | 900 | 900 |
| Kuwait | 376 | 388 | 436 | 412 | 400 | 400 |
| Libya | 183 | 573 | 681 | 1,001 | 900 | 900 |
| Mexico | 144 | 47 | 108 | 186 | 125 | 150 |
| Morocco | 536 | 147 | 471 | 276 | 200 | 200 |
| Peru | 97 | 103 | 87 | 122 | 100 | 100 |
| Saudi Arabia | 8,600 | 10,200 | 8,500 | 8,200 | 7,500 | 7,500 |
| Tunisia | 218 | 764 | 456 | 483 | 400 | 400 |
| United Arab Emirates | 524 | 541 | 468 | 400 | 400 | 400 |
| Uruguay | 77 | 252 | 126 | 189 | 175 | 175 |
| Others | 1,579 | 1,368 | 1,571 | 1,417 | 950 | 935 |
| Subtotal | 20,406 | 21,208 | 23,051 | 28,526 | 23,650 | 23,760 |
| Unaccounted | 520 | 491 | 255 | 1,112 | 1,385 | 1,175 |
| United States | 470 | 431 | 522 | 430 | 450 | 450 |
| World Total | 21,396 | 22,130 | 23,828 | 30,068 | 25,485 | 25,385 |

TY=Trade Year, see Endnotes.

World Barley Production, Consumption, and Stocks
Local Marketing Years, Thousand Metric Tons

| | 2011/12 | 2012/13 | 2013/14 | 2014/15 | 2015/16 Dec | 2015/16 Jan |
|--------------------------|---------|---------|---------|---------|----------------|----------------|
| Production | | | | | | |
| Algeria | 1,350 | 1,500 | 1,500 | 1,300 | 1,300 | 1,300 |
| Argentina | 4,500 | 5,000 | 4,750 | 2,900 | 3,400 | 3,400 |
| Australia | 8,221 | 7,472 | 9,174 | 8,014 | 8,700 | 8,700 |
| Belarus | 1,979 | 1,917 | 1,674 | 2,250 | 2,000 | 2,000 |
| Canada | 7,892 | 8,012 | 10,237 | 7,119 | 8,225 | 8,225 |
| China | 1,637 | 1,626 | 1,700 | 1,810 | 1,500 | 1,700 |
| Ethiopia | 1,592 | 1,782 | 2,053 | 2,100 | 1,900 | 1,900 |
| European Union | 51,883 | 54,875 | 59,674 | 60,460 | 60,732 | 60,962 |
| India | 1,663 | 1,619 | 1,752 | 1,831 | 1,600 | 1,600 |
| Iran | 2,900 | 2,770 | 2,800 | 3,200 | 3,300 | 3,300 |
| Kazakhstan | 2,593 | 1,500 | 2,539 | 2,412 | 2,600 | 2,600 |
| Morocco | 2,340 | 1,200 | 2,700 | 1,700 | 3,500 | 3,500 |
| Russia | 16,938 | 13,952 | 15,389 | 20,026 | 16,700 | 17,100 |
| Turkey | 7,000 | 5,500 | 7,300 | 4,000 | 7,400 | 7,400 |
| Ukraine | 9,098 | 6,935 | 7,561 | 9,450 | 8,700 | 8,700 |
| Others | 8,411 | 8,372 | 8,857 | 8,660 | 8,941 | 8,774 |
| Subtotal | 129,997 | 124,032 | 139,660 | 137,232 | 140,498 | 141,161 |
| United States | 3,370 | 4,768 | 4,719 | 3,953 | 4,666 | 4,666 |
| World Total | 133,367 | 128,800 | 144,379 | 141,185 | 145,164 | 145,827 |
| Total Consumption | | | | | | |
| Algeria | 1,800 | 2,000 | 2,050 | 2,050 | 2,050 | 2,050 |
| Argentina | 1,200 | 1,300 | 1,700 | 1,500 | 1,500 | 1,500 |
| Australia | 3,300 | 3,000 | 2,800 | 2,600 | 2,600 | 2,600 |
| Belarus | 2,100 | 2,000 | 1,800 | 2,100 | 2,200 | 2,200 |
| Canada | 6,916 | 6,809 | 7,720 | 6,472 | 6,500 | 6,500 |
| China | 3,800 | 4,000 | 6,300 | 11,600 | 8,400 | 8,800 |
| Ethiopia | 1,600 | 1,725 | 2,000 | 2,100 | 2,025 | 2,025 |
| European Union | 51,200 | 51,000 | 53,400 | 51,000 | 53,100 | 53,100 |
| Iran | 4,100 | 4,300 | 4,500 | 4,600 | 4,800 | 4,800 |
| Kazakhstan | 1,825 | 1,375 | 2,000 | 2,000 | 2,100 | 2,100 |
| Morocco | 3,100 | 1,900 | 2,300 | 2,700 | 3,000 | 3,000 |
| Russia | 14,300 | 12,100 | 12,700 | 14,100 | 13,500 | 13,900 |
| Saudi Arabia | 7,225 | 8,325 | 8,625 | 8,125 | 8,225 | 8,225 |
| Turkey | 6,750 | 6,200 | 6,950 | 5,350 | 6,900 | 6,900 |
| Ukraine | 6,300 | 5,100 | 5,000 | 4,500 | 4,500 | 4,500 |
| Others | 15,576 | 15,761 | 16,434 | 16,573 | 16,843 | 16,866 |
| Subtotal | 130,828 | 126,416 | 136,015 | 136,370 | 141,141 | 141,797 |
| United States | 4,170 | 4,638 | 4,775 | 4,234 | 4,420 | 4,420 |
| World Total | 134,998 | 131,054 | 140,790 | 140,604 | 145,561 | 146,217 |
| Ending Stocks | | | | | | |
| Algeria | 1,458 | 1,217 | 1,178 | 1,304 | 1,204 | 1,204 |
| Canada | 1,195 | 983 | 1,950 | 1,217 | 1,492 | 1,492 |
| European Union | 6,069 | 5,071 | 5,648 | 5,649 | 5,031 | 5,161 |
| Iran | 1,348 | 1,418 | 618 | 1,418 | 1,218 | 1,218 |
| Russia | 848 | 726 | 932 | 1,561 | 1,222 | 1,161 |
| Saudi Arabia | 2,814 | 3,006 | 3,396 | 3,486 | 3,276 | 3,276 |
| Ukraine | 1,172 | 873 | 972 | 1,467 | 1,176 | 1,172 |
| Others | 6,477 | 5,389 | 7,537 | 6,790 | 6,860 | 7,463 |
| Subtotal | 21,381 | 18,683 | 22,231 | 22,892 | 21,479 | 22,147 |
| United States | 1,306 | 1,750 | 1,791 | 1,711 | 2,109 | 2,066 |
| World Total | 22,687 | 20,433 | 24,022 | 24,603 | 23,588 | 24,213 |

Regional Barley Imports, Production, Consumption, and Stocks

Thousand Metric Tons

| | 2011/12 | 2012/13 | 2013/14 | 2014/15 | Dec 2015/16 | Jan 2015/16 |
|-----------------------------|----------------|----------------|----------------|----------------|----------------|----------------|
| TY Imports | | | | | | |
| North America | 620 | 499 | 639 | 781 | 600 | 625 |
| South America | 851 | 1,064 | 887 | 1,169 | 1,085 | 1,085 |
| European Union - 28 | 364 | 52 | 58 | 268 | 100 | 100 |
| Other Europe | 209 | 127 | 163 | 119 | 160 | 160 |
| Former Soviet Union - 12 | 697 | 375 | 362 | 276 | 320 | 320 |
| Middle East | 12,543 | 13,906 | 12,537 | 12,496 | 11,260 | 11,260 |
| North Africa | 1,482 | 1,885 | 2,433 | 2,581 | 2,150 | 2,150 |
| Sub-Saharan Africa | 100 | 52 | 116 | 138 | 65 | 65 |
| East Asia | 3,924 | 3,663 | 6,320 | 11,081 | 8,325 | 8,425 |
| South Asia | 67 | 7 | 12 | 15 | 10 | 10 |
| Oceania | 19 | 9 | 46 | 32 | 25 | 10 |
| Total | 20,876 | 21,639 | 23,573 | 28,956 | 24,100 | 24,210 |
| Production | | | | | | |
| North America | 11,749 | 13,812 | 15,506 | 11,622 | 13,476 | 13,476 |
| South America | 5,524 | 5,902 | 5,750 | 3,809 | 4,393 | 4,393 |
| European Union - 28 | 51,883 | 54,875 | 59,674 | 60,460 | 60,732 | 60,962 |
| Other Europe | 1,189 | 1,188 | 1,151 | 1,270 | 1,287 | 1,287 |
| Former Soviet Union - 12 | 32,227 | 25,958 | 29,153 | 35,784 | 31,850 | 32,250 |
| Middle East | 11,705 | 9,689 | 12,047 | 8,658 | 12,358 | 12,358 |
| North Africa | 4,410 | 3,306 | 4,725 | 4,109 | 5,409 | 5,409 |
| Sub-Saharan Africa | 2,099 | 2,283 | 2,521 | 2,602 | 2,447 | 2,447 |
| East Asia | 1,962 | 1,920 | 2,000 | 2,111 | 1,790 | 1,990 |
| South Asia | 2,081 | 1,956 | 2,261 | 2,340 | 2,307 | 2,103 |
| Oceania | 8,538 | 7,911 | 9,591 | 8,420 | 9,115 | 9,152 |
| Total | 133,367 | 128,800 | 144,379 | 141,185 | 145,164 | 145,827 |
| Domestic Consumption | | | | | | |
| North America | 11,786 | 12,347 | 13,195 | 11,406 | 11,620 | 11,645 |
| South America | 3,069 | 3,170 | 3,541 | 3,403 | 3,560 | 3,560 |
| European Union - 28 | 51,200 | 51,000 | 53,400 | 51,000 | 53,100 | 53,100 |
| Other Europe | 1,366 | 1,298 | 1,298 | 1,389 | 1,422 | 1,422 |
| Former Soviet Union - 12 | 26,268 | 22,339 | 23,451 | 24,605 | 24,355 | 24,755 |
| Middle East | 22,016 | 22,435 | 24,410 | 21,883 | 23,721 | 23,721 |
| North Africa | 6,186 | 5,560 | 6,230 | 7,159 | 7,208 | 7,208 |
| Sub-Saharan Africa | 2,133 | 2,285 | 2,555 | 2,640 | 2,615 | 2,615 |
| East Asia | 5,580 | 5,806 | 8,009 | 13,155 | 10,000 | 10,500 |
| South Asia | 2,008 | 1,868 | 1,715 | 1,914 | 2,012 | 1,910 |
| Oceania | 3,650 | 3,425 | 3,250 | 3,050 | 3,050 | 3,050 |
| Total | 135,262 | 131,533 | 141,054 | 141,604 | 142,663 | 143,486 |
| Ending Stocks | | | | | | |
| North America | 2,621 | 3,014 | 3,980 | 3,186 | 3,869 | 3,826 |
| South America | 543 | 656 | 815 | 790 | 742 | 683 |
| European Union - 28 | 6,069 | 5,071 | 5,648 | 5,649 | 5,031 | 5,161 |
| Other Europe | 205 | 223 | 208 | 201 | 196 | 201 |
| Former Soviet Union - 12 | 2,760 | 2,193 | 2,638 | 3,805 | 2,908 | 2,870 |
| Middle East | 5,940 | 5,736 | 5,788 | 5,928 | 6,050 | 6,050 |
| North Africa | 2,449 | 1,740 | 2,482 | 2,239 | 2,690 | 2,690 |
| Sub-Saharan Africa | 283 | 330 | 408 | 508 | 405 | 405 |
| East Asia | 961 | 737 | 1,048 | 1,085 | 890 | 1,000 |
| South Asia | 280 | 142 | 255 | 266 | 152 | 269 |
| Oceania | 576 | 591 | 752 | 946 | 655 | 1,058 |
| Total | 22,687 | 20,433 | 24,022 | 24,603 | 23,588 | 24,213 |

NOTES: Regional definitions appear on last page of this circular. Imports are reported on a trade year basis. All other data are reported using local marketing years.

World Sorghum Trade
October/September Year, Thousand Metric Tons

| | 2011/12 | 2012/13 | 2013/14 | 2014/15 | 2015/16 Dec | 2015/16 Jan |
|----------------------|---------|---------|---------|---------|----------------|----------------|
| TY Exports | | | | | | |
| Argentina | 2,163 | 3,059 | 953 | 954 | 1,200 | 1,200 |
| Australia | 1,185 | 1,425 | 405 | 1,699 | 1,000 | 1,000 |
| China | 36 | 27 | 11 | 9 | 25 | 25 |
| India | 132 | 231 | 89 | 118 | 100 | 100 |
| Kenya | 16 | 32 | 51 | 40 | 30 | 30 |
| Nigeria | 75 | 50 | 50 | 100 | 50 | 50 |
| Ukraine | 113 | 124 | 229 | 156 | 150 | 100 |
| Others | 180 | 208 | 240 | 198 | 130 | 130 |
| Subtotal | 3,900 | 5,156 | 2,028 | 3,274 | 2,685 | 2,635 |
| United States | 1,549 | 2,136 | 5,717 | 9,249 | 7,600 | 7,600 |
| World Total | 5,449 | 7,292 | 7,745 | 12,523 | 10,285 | 10,235 |
| TY Imports | | | | | | |
| Chile | 544 | 404 | 109 | 97 | 100 | 100 |
| China | 84 | 631 | 4,161 | 10,162 | 7,000 | 7,000 |
| Colombia | 592 | 591 | 104 | 0 | 50 | 50 |
| Ethiopia | 30 | 50 | 50 | 75 | 50 | 50 |
| European Union | 126 | 291 | 186 | 131 | 100 | 80 |
| Japan | 1,481 | 1,897 | 1,003 | 903 | 1,000 | 1,000 |
| Kenya | 74 | 102 | 94 | 79 | 100 | 100 |
| Mexico | 1,369 | 1,793 | 162 | 29 | 500 | 500 |
| South Sudan | 13 | 6 | 125 | 75 | 50 | 50 |
| Sudan | 125 | 175 | 75 | 100 | 75 | 75 |
| Others | 650 | 674 | 684 | 342 | 305 | 350 |
| Subtotal | 5,088 | 6,614 | 6,753 | 11,993 | 9,330 | 9,355 |
| Unaccounted | 358 | 435 | 989 | 503 | 925 | 770 |
| United States | 3 | 243 | 3 | 27 | 30 | 110 |
| World Total | 5,449 | 7,292 | 7,745 | 12,523 | 10,285 | 10,235 |

TY=Trade Year, see Endnotes.

World Sorghum Production, Consumption, and Stocks
Local Marketing Years, Thousand Metric Tons

| | 2011/12 | 2012/13 | 2013/14 | 2014/15 | 2015/16 Dec | 2015/16 Jan |
|--------------------------|---------------|---------------|---------------|---------------|----------------|----------------|
| Production | | | | | | |
| Argentina | 4,200 | 4,700 | 4,400 | 3,500 | 3,900 | 3,900 |
| Australia | 2,239 | 2,230 | 1,282 | 2,104 | 2,200 | 2,200 |
| Brazil | 2,222 | 2,102 | 1,890 | 2,000 | 2,000 | 2,000 |
| Burkina | 1,500 | 1,924 | 1,880 | 1,836 | 1,900 | 1,900 |
| Cameroon | 1,150 | 1,100 | 1,150 | 1,150 | 1,150 | 1,150 |
| Chad | 648 | 1,172 | 745 | 900 | 900 | 900 |
| China | 2,051 | 2,556 | 2,892 | 2,885 | 2,600 | 2,900 |
| Ethiopia | 3,951 | 3,604 | 4,114 | 4,000 | 3,800 | 3,800 |
| India | 5,979 | 5,281 | 5,542 | 5,050 | 5,500 | 5,500 |
| Mali | 1,191 | 1,212 | 820 | 1,300 | 1,300 | 1,300 |
| Mexico | 6,425 | 6,174 | 8,500 | 6,270 | 7,150 | 7,150 |
| Niger | 807 | 1,376 | 1,287 | 1,000 | 1,100 | 1,100 |
| Nigeria | 6,900 | 5,943 | 6,592 | 6,700 | 6,150 | 6,150 |
| Sudan | 4,605 | 4,524 | 2,249 | 6,281 | 5,500 | 5,500 |
| Tanzania | 807 | 839 | 832 | 840 | 840 | 840 |
| Others | 7,124 | 6,654 | 7,114 | 6,686 | 6,882 | 6,727 |
| Subtotal | 51,799 | 51,391 | 51,289 | 52,502 | 52,872 | 53,017 |
| United States | 5,410 | 6,293 | 9,966 | 10,988 | 15,083 | 15,158 |
| World Total | 57,209 | 57,684 | 61,255 | 63,490 | 67,955 | 68,175 |
| Total Consumption | | | | | | |
| Argentina | 1,900 | 2,300 | 2,700 | 2,800 | 2,900 | 2,900 |
| Australia | 1,105 | 1,105 | 905 | 505 | 1,205 | 1,205 |
| Brazil | 2,175 | 2,300 | 2,000 | 2,000 | 1,900 | 1,900 |
| Burkina | 1,500 | 1,900 | 1,900 | 1,800 | 1,900 | 1,900 |
| Cameroon | 1,175 | 1,110 | 1,165 | 1,175 | 1,175 | 1,175 |
| Chad | 650 | 1,150 | 850 | 900 | 900 | 900 |
| China | 2,200 | 3,200 | 6,800 | 12,900 | 9,700 | 10,000 |
| Ethiopia | 3,700 | 3,700 | 4,200 | 4,100 | 3,900 | 3,900 |
| India | 6,000 | 5,150 | 5,200 | 5,100 | 5,350 | 5,350 |
| Japan | 1,475 | 1,900 | 1,000 | 900 | 1,000 | 1,000 |
| Mali | 1,300 | 1,200 | 950 | 1,200 | 1,300 | 1,300 |
| Mexico | 8,100 | 8,100 | 8,300 | 6,600 | 7,600 | 7,600 |
| Niger | 950 | 1,200 | 1,300 | 1,100 | 1,100 | 1,100 |
| Nigeria | 6,800 | 5,900 | 6,550 | 6,650 | 6,050 | 6,050 |
| Sudan | 4,500 | 4,700 | 2,550 | 6,000 | 5,800 | 5,800 |
| Others | 9,539 | 9,076 | 8,502 | 8,121 | 8,081 | 8,106 |
| Subtotal | 54,553 | 52,793 | 55,942 | 61,984 | 61,336 | 61,504 |
| United States | 3,916 | 4,796 | 4,127 | 2,429 | 5,842 | 5,843 |
| World Total | 58,469 | 57,589 | 60,069 | 64,413 | 67,178 | 67,347 |
| Ending Stocks | | | | | | |
| Argentina | 164 | 781 | 1,202 | 802 | 702 | 702 |
| Brazil | 472 | 272 | 151 | 138 | 228 | 228 |
| China | 366 | 326 | 568 | 706 | 388 | 581 |
| India | 206 | 109 | 364 | 193 | 314 | 243 |
| Mexico | 418 | 285 | 647 | 338 | 388 | 388 |
| Nigeria | 215 | 208 | 200 | 150 | 200 | 200 |
| Sudan | 609 | 588 | 357 | 723 | 478 | 493 |
| Others | 1,633 | 1,807 | 1,594 | 1,506 | 1,426 | 1,362 |
| Subtotal | 4,083 | 4,376 | 5,083 | 4,556 | 4,124 | 4,197 |
| United States | 583 | 385 | 864 | 468 | 1,499 | 1,655 |
| World Total | 4,666 | 4,761 | 5,947 | 5,024 | 5,623 | 5,852 |

Regional Sorghum Imports, Production, Consumption, and Stocks

Thousand Metric Tons

| | 2011/12 | 2012/13 | 2013/14 | 2014/15 | Dec 2015/16 | Jan 2015/16 |
|-----------------------------|---------------|---------------|---------------|---------------|----------------|----------------|
| TY Imports | | | | | | |
| North America | 1,372 | 2,036 | 165 | 56 | 530 | 610 |
| South America | 1,199 | 1,071 | 239 | 116 | 185 | 185 |
| European Union - 28 | 126 | 291 | 186 | 131 | 100 | 80 |
| Other Europe | 0 | 0 | 0 | 0 | 0 | 0 |
| Middle East | 101 | 194 | 231 | 36 | 50 | 50 |
| North Africa | 54 | 0 | 41 | 5 | 5 | 5 |
| Sub-Saharan Africa | 557 | 586 | 557 | 501 | 405 | 450 |
| East Asia | 1,655 | 2,650 | 5,281 | 11,135 | 8,055 | 8,055 |
| Southeast Asia | 13 | 18 | 41 | 11 | 15 | 15 |
| Others | 14 | 11 | 15 | 29 | 15 | 15 |
| Total | 5,091 | 6,857 | 6,756 | 12,020 | 9,360 | 9,465 |
| Production | | | | | | |
| North America | 11,835 | 12,467 | 18,466 | 17,258 | 22,233 | 22,308 |
| Central America | 312 | 339 | 335 | 335 | 335 | 335 |
| Caribbean | 92 | 92 | 94 | 94 | 94 | 94 |
| South America | 7,247 | 7,495 | 7,081 | 6,349 | 6,822 | 6,822 |
| European Union - 28 | 671 | 473 | 703 | 880 | 797 | 797 |
| Middle East | 764 | 814 | 789 | 692 | 635 | 635 |
| North Africa | 847 | 763 | 755 | 756 | 756 | 756 |
| Sub-Saharan Africa | 24,802 | 24,783 | 22,782 | 26,701 | 25,604 | 25,524 |
| East Asia | 2,054 | 2,560 | 2,896 | 2,889 | 2,604 | 2,904 |
| South Asia | 6,116 | 5,404 | 5,661 | 5,153 | 5,645 | 5,645 |
| Southeast Asia | 54 | 55 | 57 | 55 | 55 | 55 |
| Oceania | 2,239 | 2,230 | 1,282 | 2,104 | 2,200 | 2,200 |
| Others | 176 | 209 | 354 | 224 | 175 | 100 |
| Total | 57,209 | 57,684 | 61,255 | 63,490 | 67,955 | 68,175 |
| Domestic Consumption | | | | | | |
| North America | 12,016 | 12,896 | 12,427 | 9,029 | 13,442 | 13,443 |
| Central America | 320 | 325 | 325 | 330 | 340 | 340 |
| Caribbean | 92 | 92 | 94 | 94 | 94 | 94 |
| South America | 6,104 | 6,076 | 5,789 | 5,722 | 5,897 | 5,897 |
| European Union - 28 | 760 | 795 | 880 | 995 | 870 | 870 |
| Middle East | 789 | 1,052 | 894 | 865 | 685 | 685 |
| North Africa | 908 | 756 | 794 | 756 | 756 | 756 |
| Sub-Saharan Africa | 24,850 | 25,038 | 23,500 | 26,709 | 26,049 | 26,049 |
| East Asia | 3,771 | 5,221 | 7,921 | 13,876 | 10,760 | 11,060 |
| South Asia | 6,147 | 5,283 | 5,334 | 5,232 | 5,510 | 5,510 |
| Southeast Asia | 68 | 68 | 61 | 92 | 65 | 65 |
| Oceania | 1,105 | 1,105 | 905 | 505 | 1,205 | 1,205 |
| Others | 55 | 80 | 75 | 75 | 30 | 55 |
| Total | 56,985 | 58,787 | 58,999 | 64,280 | 65,703 | 66,029 |
| Ending Stocks | | | | | | |
| North America | 1,001 | 670 | 1,511 | 806 | 1,887 | 2,043 |
| Central America | 23 | 30 | 33 | 33 | 23 | 23 |
| South America | 718 | 1,146 | 1,427 | 1,016 | 981 | 981 |
| European Union - 28 | 14 | 5 | 19 | 21 | 33 | 13 |
| Middle East | 56 | 65 | 47 | 35 | 35 | 35 |
| North Africa | 60 | 66 | 68 | 73 | 78 | 78 |
| Sub-Saharan Africa | 1,890 | 2,037 | 1,557 | 1,844 | 1,596 | 1,619 |
| East Asia | 451 | 413 | 658 | 798 | 479 | 672 |
| South Asia | 206 | 109 | 364 | 193 | 314 | 243 |
| Oceania | 230 | 195 | 187 | 136 | 181 | 131 |
| Others | 17 | 25 | 76 | 69 | 16 | 14 |
| Total | 4,666 | 4,761 | 5,947 | 5,024 | 5,623 | 5,852 |

NOTES: Regional definitions appear on last page of this circular. Imports are reported on a trade year basis. All other data are reported using local marketing years.

World Oats Trade
October/September Year, Thousand Metric Tons

| | 2011/12 | 2012/13 | 2013/14 | 2014/15 | 2015/16 Dec | 2015/16 Jan |
|------------------------|--------------|--------------|--------------|--------------|----------------|----------------|
| TY Exports | | | | | | |
| Argentina | 13 | 2 | 2 | 2 | 5 | 5 |
| Australia | 174 | 240 | 270 | 250 | 350 | 350 |
| Canada | 1,763 | 1,351 | 1,732 | 1,726 | 1,600 | 1,600 |
| Chile | 106 | 41 | 49 | 84 | 75 | 75 |
| European Union | 176 | 126 | 291 | 231 | 120 | 150 |
| Russia | 18 | 4 | 6 | 15 | 10 | 10 |
| Ukraine | 2 | 2 | 6 | 46 | 10 | 10 |
| Others | 7 | 10 | 14 | 8 | 10 | 10 |
| Subtotal | 2,259 | 1,776 | 2,370 | 2,362 | 2,180 | 2,210 |
| United States | 28 | 18 | 29 | 23 | 30 | 30 |
| World Total | 2,287 | 1,794 | 2,399 | 2,385 | 2,210 | 2,240 |
| TY Imports | | | | | | |
| Algeria | 9 | 7 | 12 | 15 | 10 | 10 |
| Bosnia and Herzegovina | 3 | 2 | 3 | 4 | 5 | 5 |
| Canada | 11 | 9 | 26 | 12 | 10 | 10 |
| China | 68 | 87 | 116 | 162 | 250 | 250 |
| Colombia | 1 | 1 | 2 | 2 | 5 | 5 |
| Ecuador | 22 | 19 | 21 | 21 | 20 | 20 |
| European Union | 3 | 4 | 3 | 4 | 5 | 5 |
| Japan | 54 | 51 | 46 | 47 | 50 | 50 |
| Mexico | 134 | 111 | 93 | 86 | 100 | 100 |
| Norway | 49 | 36 | 38 | 2 | 40 | 40 |
| Serbia | 2 | 2 | 2 | 3 | 5 | 5 |
| South Africa | 11 | 11 | 19 | 50 | 25 | 25 |
| Switzerland | 56 | 44 | 51 | 49 | 50 | 50 |
| Turkey | 4 | 0 | 0 | 5 | 5 | 5 |
| Uruguay | 8 | 6 | 6 | 7 | 5 | 5 |
| Others | 7 | 0 | 2 | 1 | 0 | 0 |
| Subtotal | 442 | 390 | 440 | 470 | 585 | 585 |
| Unaccounted | 115 | 49 | 93 | 156 | 25 | 55 |
| United States | 1,730 | 1,355 | 1,866 | 1,759 | 1,600 | 1,600 |
| World Total | 2,287 | 1,794 | 2,399 | 2,385 | 2,210 | 2,240 |

TY=Trade Year, see Endnotes.

World Oats Production, Consumption, and Stocks
Local Marketing Years, Thousand Metric Tons

| | 2011/12 | 2012/13 | 2013/14 | 2014/15 | 2015/16 Dec | 2015/16 Jan |
|--------------------------|---------------|---------------|---------------|---------------|----------------|----------------|
| Production | | | | | | |
| Algeria | 67 | 110 | 110 | 110 | 110 | 110 |
| Argentina | 345 | 496 | 445 | 525 | 485 | 485 |
| Australia | 1,262 | 1,121 | 1,255 | 1,087 | 1,300 | 1,300 |
| Belarus | 448 | 422 | 352 | 470 | 400 | 400 |
| Brazil | 354 | 361 | 380 | 300 | 300 | 300 |
| Canada | 3,158 | 2,830 | 3,906 | 2,979 | 3,430 | 3,430 |
| Chile | 451 | 680 | 610 | 421 | 470 | 470 |
| China | 600 | 600 | 580 | 600 | 600 | 600 |
| European Union | 7,927 | 7,909 | 8,380 | 7,845 | 7,621 | 7,640 |
| Kazakhstan | 258 | 200 | 305 | 226 | 250 | 250 |
| Mexico | 51 | 84 | 90 | 90 | 90 | 90 |
| Norway | 231 | 232 | 214 | 236 | 236 | 236 |
| Russia | 5,332 | 4,027 | 4,932 | 5,267 | 5,000 | 4,550 |
| Turkey | 218 | 210 | 210 | 210 | 210 | 210 |
| Ukraine | 506 | 630 | 467 | 610 | 375 | 375 |
| Others | 372 | 315 | 328 | 315 | 351 | 349 |
| Subtotal | 21,580 | 20,227 | 22,564 | 21,291 | 21,228 | 20,795 |
| United States | 728 | 892 | 938 | 1,019 | 1,300 | 1,300 |
| World Total | 22,308 | 21,119 | 23,502 | 22,310 | 22,528 | 22,095 |
| Total Consumption | | | | | | |
| Algeria | 75 | 119 | 118 | 126 | 120 | 120 |
| Argentina | 350 | 500 | 425 | 525 | 500 | 500 |
| Australia | 1,100 | 925 | 950 | 875 | 900 | 900 |
| Belarus | 450 | 400 | 375 | 450 | 400 | 400 |
| Brazil | 350 | 350 | 375 | 300 | 290 | 290 |
| Canada | 1,361 | 1,592 | 1,660 | 1,676 | 1,650 | 1,650 |
| Chile | 400 | 600 | 570 | 365 | 375 | 375 |
| China | 625 | 675 | 700 | 750 | 875 | 875 |
| European Union | 7,800 | 7,700 | 8,075 | 7,675 | 7,675 | 7,675 |
| Kazakhstan | 225 | 225 | 275 | 225 | 250 | 250 |
| Mexico | 185 | 195 | 185 | 175 | 190 | 190 |
| Norway | 270 | 295 | 245 | 245 | 270 | 270 |
| Russia | 5,000 | 4,300 | 4,900 | 5,200 | 5,100 | 4,600 |
| Turkey | 215 | 215 | 215 | 215 | 215 | 215 |
| Ukraine | 500 | 600 | 475 | 600 | 375 | 375 |
| Others | 519 | 451 | 497 | 500 | 516 | 514 |
| Subtotal | 19,589 | 19,217 | 20,264 | 19,894 | 19,688 | 19,216 |
| United States | 2,499 | 2,743 | 2,757 | 2,424 | 2,828 | 2,828 |
| World Total | 22,088 | 21,960 | 23,021 | 22,318 | 22,516 | 22,044 |
| Ending Stocks | | | | | | |
| Argentina | 55 | 49 | 67 | 62 | 42 | 42 |
| Australia | 134 | 60 | 105 | 67 | 117 | 117 |
| Canada | 805 | 446 | 1,054 | 681 | 871 | 871 |
| Chile | 25 | 61 | 45 | 26 | 46 | 46 |
| China | 127 | 139 | 135 | 147 | 122 | 122 |
| European Union | 795 | 901 | 894 | 849 | 680 | 669 |
| Russia | 485 | 203 | 230 | 289 | 177 | 229 |
| Others | 225 | 221 | 199 | 179 | 175 | 175 |
| Subtotal | 2,651 | 2,080 | 2,729 | 2,300 | 2,230 | 2,271 |
| United States | 797 | 527 | 359 | 780 | 860 | 860 |
| World Total | 3,448 | 2,607 | 3,088 | 3,080 | 3,090 | 3,131 |

Regional Oats Imports, Production, Consumption, and Stocks

Thousand Metric Tons

| | 2011/12 | 2012/13 | 2013/14 | 2014/15 | Dec 2015/16 | Jan 2015/16 |
|-----------------------------|---------------|---------------|---------------|---------------|----------------|----------------|
| TY Imports | | | | | | |
| North America | 1,875 | 1,475 | 1,985 | 1,857 | 1,710 | 1,710 |
| South America | 31 | 26 | 29 | 30 | 30 | 30 |
| European Union - 28 | 3 | 4 | 3 | 4 | 5 | 5 |
| Other Europe | 110 | 84 | 94 | 58 | 100 | 100 |
| Former Soviet Union - 12 | 7 | 0 | 2 | 1 | 0 | 0 |
| Middle East | 4 | 0 | 0 | 5 | 5 | 5 |
| North Africa | 9 | 7 | 12 | 15 | 10 | 10 |
| Sub-Saharan Africa | 11 | 11 | 19 | 50 | 25 | 25 |
| East Asia | 122 | 138 | 162 | 209 | 300 | 300 |
| Oceania | 0 | 0 | 0 | 0 | 0 | 0 |
| Total | 2,172 | 1,745 | 2,306 | 2,229 | 2,185 | 2,185 |
| Production | | | | | | |
| North America | 3,937 | 3,806 | 4,934 | 4,088 | 4,820 | 4,820 |
| South America | 1,191 | 1,577 | 1,478 | 1,274 | 1,316 | 1,316 |
| European Union - 28 | 7,927 | 7,909 | 8,380 | 7,845 | 7,621 | 7,640 |
| Other Europe | 373 | 365 | 348 | 369 | 372 | 372 |
| Former Soviet Union - 12 | 6,549 | 5,285 | 6,062 | 6,579 | 6,031 | 5,581 |
| Middle East | 218 | 210 | 210 | 210 | 210 | 210 |
| North Africa | 163 | 166 | 166 | 166 | 166 | 166 |
| Sub-Saharan Africa | 57 | 60 | 59 | 55 | 55 | 55 |
| East Asia | 602 | 602 | 582 | 602 | 601 | 601 |
| Oceania | 1,291 | 1,139 | 1,283 | 1,122 | 1,336 | 1,334 |
| Total | 22,308 | 21,119 | 23,502 | 22,310 | 22,528 | 22,095 |
| Domestic Consumption | | | | | | |
| North America | 4,045 | 4,530 | 4,602 | 4,275 | 4,668 | 4,668 |
| South America | 1,167 | 1,515 | 1,447 | 1,251 | 1,256 | 1,256 |
| European Union - 28 | 7,800 | 7,700 | 8,075 | 7,675 | 7,675 | 7,675 |
| Other Europe | 478 | 474 | 429 | 432 | 467 | 467 |
| Former Soviet Union - 12 | 6,180 | 5,531 | 6,032 | 6,481 | 6,131 | 5,631 |
| Middle East | 215 | 215 | 215 | 215 | 215 | 215 |
| North Africa | 172 | 175 | 174 | 182 | 176 | 176 |
| Sub-Saharan Africa | 53 | 72 | 95 | 105 | 80 | 80 |
| East Asia | 685 | 730 | 750 | 800 | 925 | 925 |
| Oceania | 1,129 | 943 | 978 | 910 | 936 | 934 |
| Total | 21,924 | 21,885 | 22,797 | 22,326 | 22,529 | 22,027 |
| Ending Stocks | | | | | | |
| North America | 1,605 | 974 | 1,416 | 1,463 | 1,733 | 1,733 |
| South America | 93 | 128 | 129 | 100 | 105 | 105 |
| European Union - 28 | 795 | 901 | 894 | 849 | 680 | 669 |
| Other Europe | 48 | 27 | 41 | 38 | 43 | 43 |
| Former Soviet Union - 12 | 592 | 332 | 346 | 395 | 268 | 320 |
| Middle East | 17 | 12 | 7 | 7 | 7 | 7 |
| North Africa | 1 | 1 | 1 | 1 | 1 | 1 |
| Sub-Saharan Africa | 29 | 28 | 11 | 11 | 11 | 11 |
| East Asia | 134 | 144 | 138 | 149 | 125 | 125 |
| Oceania | 134 | 60 | 105 | 67 | 117 | 117 |
| Total | 3,448 | 2,607 | 3,088 | 3,080 | 3,090 | 3,131 |

NOTES: Regional definitions appear on last page of this circular. Imports are reported on a trade year basis. All other data are reported using local marketing years.

World Rye Trade
October/September Year, Thousand Metric Tons

| | 2011/12 | 2012/13 | 2013/14 | 2014/15 | 2015/16 Dec | 2015/16 Jan |
|----------------------|---------|---------|---------|---------|----------------|----------------|
| TY Exports | | | | | | |
| Belarus | 25 | 25 | 5 | 5 | 5 | 5 |
| Canada | 159 | 178 | 97 | 89 | 100 | 100 |
| European Union | 59 | 122 | 201 | 167 | 150 | 150 |
| Russia | 284 | 78 | 83 | 121 | 100 | 100 |
| Ukraine | 9 | 16 | 59 | 13 | 20 | 20 |
| Others | 4 | 0 | 0 | 0 | 0 | 0 |
| Subtotal | 540 | 419 | 445 | 395 | 375 | 375 |
| United States | 8 | 7 | 6 | 3 | 5 | 5 |
| World Total | 548 | 426 | 451 | 398 | 380 | 380 |
| TY Imports | | | | | | |
| European Union | 302 | 68 | 96 | 96 | 50 | 50 |
| Israel | 11 | 34 | 33 | 25 | 25 | 25 |
| Japan | 46 | 27 | 37 | 22 | 25 | 25 |
| Korea, South | 11 | 12 | 8 | 4 | 10 | 10 |
| Norway | 11 | 21 | 16 | 5 | 15 | 15 |
| Russia | 0 | 25 | 5 | 5 | 5 | 5 |
| Switzerland | 2 | 9 | 6 | 6 | 5 | 5 |
| Others | 9 | 2 | 1 | 5 | 0 | 0 |
| Subtotal | 392 | 198 | 202 | 168 | 135 | 135 |
| Unaccounted | -18 | 7 | 45 | -32 | 45 | 45 |
| United States | 174 | 221 | 204 | 262 | 200 | 200 |
| World Total | 548 | 426 | 451 | 398 | 380 | 380 |

TY=Trade Year, see Endnotes.

World Rye Production, Consumption, and Stocks
Local Marketing Years, Thousand Metric Tons

| | 2011/12 | 2012/13 | 2013/14 | 2014/15 | 2015/16 Dec | 2015/16 Jan |
|--------------------------|---------|---------|---------|---------|----------------|----------------|
| Production | | | | | | |
| Argentina | 45 | 40 | 52 | 97 | 56 | 56 |
| Belarus | 801 | 1,082 | 648 | 950 | 800 | 800 |
| Canada | 241 | 337 | 223 | 218 | 225 | 225 |
| European Union | 6,900 | 8,763 | 10,151 | 8,858 | 7,660 | 7,660 |
| Russia | 2,967 | 2,132 | 3,360 | 3,279 | 3,300 | 2,100 |
| Turkey | 366 | 370 | 350 | 350 | 350 | 350 |
| Ukraine | 579 | 676 | 638 | 475 | 375 | 375 |
| Others | 137 | 146 | 126 | 144 | 134 | 134 |
| Subtotal | 12,036 | 13,546 | 15,548 | 14,371 | 12,900 | 11,700 |
| United States | 154 | 166 | 194 | 183 | 292 | 292 |
| World Total | 12,190 | 13,712 | 15,742 | 14,554 | 13,192 | 11,992 |
| Total Consumption | | | | | | |
| Argentina | 45 | 40 | 52 | 97 | 56 | 56 |
| Belarus | 750 | 1,000 | 650 | 950 | 800 | 800 |
| Canada | 101 | 127 | 107 | 134 | 123 | 123 |
| European Union | 7,400 | 8,700 | 9,650 | 8,900 | 7,800 | 7,800 |
| Israel | 11 | 34 | 33 | 25 | 25 | 25 |
| Kazakhstan | 30 | 50 | 40 | 65 | 50 | 50 |
| Norway | 27 | 26 | 28 | 20 | 27 | 27 |
| Russia | 2,850 | 2,000 | 3,100 | 3,250 | 3,200 | 2,150 |
| Turkey | 375 | 375 | 350 | 350 | 350 | 350 |
| Ukraine | 625 | 625 | 625 | 475 | 400 | 400 |
| Others | 161 | 139 | 127 | 106 | 112 | 112 |
| Subtotal | 12,346 | 13,146 | 14,767 | 14,375 | 12,973 | 11,903 |
| United States | 311 | 387 | 424 | 406 | 467 | 467 |
| World Total | 12,657 | 13,533 | 15,191 | 14,781 | 13,440 | 12,370 |
| Ending Stocks | | | | | | |
| Belarus | 110 | 167 | 160 | 155 | 150 | 150 |
| Canada | 25 | 46 | 44 | 42 | 44 | 44 |
| European Union | 747 | 795 | 1,204 | 1,080 | 840 | 840 |
| Kazakhstan | 3 | 3 | 6 | 2 | 2 | 2 |
| Russia | 129 | 153 | 345 | 265 | 270 | 140 |
| Turkey | 24 | 18 | 18 | 23 | 23 | 23 |
| Ukraine | 132 | 166 | 128 | 106 | 61 | 61 |
| Others | 5 | 7 | 4 | 1 | 1 | 1 |
| Subtotal | 1,175 | 1,355 | 1,909 | 1,674 | 1,391 | 1,261 |
| United States | 11 | 10 | 7 | 15 | 50 | 50 |
| World Total | 1,186 | 1,365 | 1,916 | 1,689 | 1,441 | 1,311 |

Regional Rye Imports, Production, Consumption, and Stocks

Thousand Metric Tons

| | 2011/12 | 2012/13 | 2013/14 | 2014/15 | Dec 2015/16 | Jan 2015/16 |
|-----------------------------|---------------|---------------|---------------|---------------|----------------|----------------|
| TY Imports | | | | | | |
| North America | 174 | 221 | 204 | 262 | 200 | 200 |
| South America | 0 | 0 | 0 | 0 | 0 | 0 |
| European Union - 28 | 302 | 68 | 96 | 96 | 50 | 50 |
| Other Europe | 14 | 32 | 23 | 11 | 20 | 20 |
| Former Soviet Union - 12 | 5 | 25 | 5 | 5 | 5 | 5 |
| Middle East | 14 | 34 | 33 | 30 | 25 | 25 |
| Sub-Saharan Africa | 0 | 0 | 0 | 0 | 0 | 0 |
| East Asia | 57 | 39 | 45 | 26 | 35 | 35 |
| Oceania | 0 | 0 | 0 | 0 | 0 | 0 |
| Total | 566 | 419 | 406 | 430 | 335 | 335 |
| Production | | | | | | |
| North America | 395 | 503 | 417 | 401 | 517 | 517 |
| South America | 49 | 47 | 59 | 105 | 64 | 64 |
| European Union - 28 | 6,900 | 8,763 | 10,151 | 8,858 | 7,660 | 7,660 |
| Other Europe | 62 | 46 | 53 | 52 | 51 | 51 |
| Former Soviet Union - 12 | 4,375 | 3,940 | 4,689 | 4,765 | 4,525 | 3,325 |
| Middle East | 366 | 370 | 350 | 350 | 350 | 350 |
| Sub-Saharan Africa | 3 | 3 | 3 | 3 | 3 | 3 |
| East Asia | 0 | 0 | 0 | 0 | 0 | 0 |
| Oceania | 40 | 40 | 20 | 20 | 22 | 22 |
| Total | 12,190 | 13,712 | 15,742 | 14,554 | 13,192 | 11,992 |
| Domestic Consumption | | | | | | |
| North America | 412 | 514 | 531 | 540 | 590 | 590 |
| South America | 49 | 47 | 59 | 105 | 64 | 64 |
| European Union - 28 | 7,400 | 8,700 | 9,650 | 8,900 | 7,800 | 7,800 |
| Other Europe | 76 | 78 | 77 | 66 | 71 | 71 |
| Former Soviet Union - 12 | 4,255 | 3,675 | 4,415 | 4,740 | 4,450 | 3,400 |
| Middle East | 386 | 409 | 383 | 375 | 375 | 375 |
| Sub-Saharan Africa | 2 | 3 | 3 | 3 | 3 | 3 |
| East Asia | 66 | 37 | 48 | 29 | 35 | 35 |
| Oceania | 40 | 40 | 20 | 20 | 22 | 22 |
| Total | 12,686 | 13,503 | 15,186 | 14,778 | 13,410 | 12,360 |
| Ending Stocks | | | | | | |
| North America | 36 | 56 | 51 | 57 | 94 | 94 |
| South America | 0 | 0 | 0 | 0 | 0 | 0 |
| European Union - 28 | 747 | 795 | 1,204 | 1,080 | 840 | 840 |
| Other Europe | 0 | 0 | 0 | 0 | 0 | 0 |
| Former Soviet Union - 12 | 374 | 489 | 639 | 528 | 483 | 353 |
| Middle East | 24 | 18 | 18 | 23 | 23 | 23 |
| Sub-Saharan Africa | 0 | 0 | 0 | 0 | 0 | 0 |
| East Asia | 5 | 7 | 4 | 1 | 1 | 1 |
| Oceania | 0 | 0 | 0 | 0 | 0 | 0 |
| Total | 1,186 | 1,365 | 1,916 | 1,689 | 1,441 | 1,311 |

NOTES: Regional definitions appear on last page of this circular. Imports are reported on a trade year basis. All other data are reported using local marketing years.



HISTORICAL DATA SERIES FOR SELECTED REGIONS AND COUNTRIES

CONTENTS

| | |
|--|----|
| European Union: Grain Supply and Demand | 36 |
| China: Grain Supply and Demand | 37 |
| Other Europe: Grain Supply and Demand | 38 |
| Former Soviet Union: Grain Supply and Demand..... | 39 |
| Wheat Supply and Disappearance: Selected Exporters | 43 |
| Corn Supply and Disappearance: Selected Exporters..... | 45 |
| Barley Supply and Disappearance: Selected Exporters | 47 |
| Sorghum Supply and Disappearance: Selected Exporters | 48 |
| U.S. Grains: Supply and Distribution..... | 49 |
| Total Wheat and Coarse Grains: Supply and Demand | 50 |
| World Wheat and Coarse Grains: Supply and Demand | 51 |
| World Corn and Barley: Supply and Demand | 52 |
| World Rice: Supply and Demand | 53 |

European Union: Grain Supply and Demand

Wheat and Coarse Grains Millions of Metric Tons/Hectares

| | Area Harvested | Yield | Production | Imports | Exports | Feed Dom. | Domestic Consumption | Ending Stocks |
|--------------------------------|-----------------------|--------------|-------------------|----------------|----------------|------------------|-----------------------------|----------------------|
| Wheat | | | | | | | | |
| 2004/05 | 26.2 | 5.6 | 147.7 | 7.1 | 14.7 | 59.3 | 123.9 | 28.3 |
| 2005/06 | 26.0 | 5.1 | 132.9 | 6.8 | 15.7 | 63.0 | 128.2 | 24.1 |
| 2006/07 | 24.7 | 5.1 | 125.7 | 5.2 | 13.9 | 60.2 | 126.2 | 14.8 |
| 2007/08 | 24.9 | 4.9 | 120.8 | 6.8 | 12.4 | 52.4 | 117.2 | 12.8 |
| 2008/09 | 26.8 | 5.7 | 151.9 | 7.7 | 25.4 | 60.5 | 127.6 | 19.4 |
| 2009/10 | 26.0 | 5.4 | 139.7 | 5.4 | 22.3 | 57.5 | 125.6 | 16.6 |
| 2010/11 | 26.0 | 5.3 | 136.7 | 4.6 | 23.1 | 52.5 | 122.8 | 11.9 |
| 2011/12 | 25.8 | 5.3 | 138.2 | 7.4 | 16.7 | 57.5 | 127.2 | 13.5 |
| 2012/13 | 26.0 | 5.2 | 133.9 | 5.3 | 22.8 | 51.0 | 119.3 | 10.7 |
| 2013/14 | 25.9 | 5.6 | 144.6 | 4.0 | 32.0 | 49.0 | 117.3 | 9.9 |
| 2014/15 | 26.8 | 5.8 | 156.5 | 6.0 | 35.4 | 54.5 | 123.5 | 13.5 |
| 2015/16 | 26.7 | 5.9 | 158.0 | 6.0 | 32.5 | 57.0 | 125.8 | 19.3 |
| Coarse Grains | | | | | | | | |
| 2004/05 | 33.9 | 5.0 | 169.1 | 3.0 | 4.8 | 118.9 | 155.2 | 25.6 |
| 2005/06 | 33.2 | 4.5 | 149.5 | 2.7 | 4.3 | 112.4 | 150.7 | 22.8 |
| 2006/07 | 32.4 | 4.3 | 140.0 | 8.1 | 4.5 | 112.9 | 150.6 | 15.7 |
| 2007/08 | 32.6 | 4.3 | 138.7 | 20.3 | 4.5 | 121.6 | 157.1 | 13.1 |
| 2008/09 | 34.0 | 4.8 | 164.9 | 3.1 | 5.7 | 116.1 | 154.2 | 21.3 |
| 2009/10 | 32.9 | 4.8 | 157.6 | 2.9 | 3.0 | 114.8 | 152.4 | 26.3 |
| 2010/11 | 30.2 | 4.7 | 142.9 | 8.5 | 6.2 | 116.9 | 154.6 | 16.9 |
| 2011/12 | 30.2 | 5.0 | 149.9 | 7.0 | 6.5 | 113.2 | 151.5 | 15.7 |
| 2012/13 | 31.4 | 4.7 | 145.9 | 11.8 | 7.4 | 113.7 | 153.1 | 13.1 |
| 2013/14 | 31.4 | 5.1 | 158.9 | 16.3 | 8.6 | 122.4 | 164.1 | 15.5 |
| 2014/15 | 30.8 | 5.5 | 170.6 | 9.1 | 14.0 | 121.5 | 163.3 | 18.0 |
| 2015/16 | 30.4 | 4.9 | 150.7 | 16.4 | 9.9 | 119.6 | 161.4 | 13.7 |
| Wheat and Coarse Grains | | | | | | | | |
| 2004/05 | 60.1 | 5.3 | 316.8 | 10.0 | 19.5 | 178.2 | 279.1 | 54.0 |
| 2005/06 | 59.1 | 4.8 | 282.3 | 9.4 | 20.0 | 175.4 | 278.9 | 46.9 |
| 2006/07 | 57.0 | 4.7 | 265.7 | 13.2 | 18.5 | 173.1 | 276.8 | 30.5 |
| 2007/08 | 57.5 | 4.5 | 259.5 | 27.1 | 16.9 | 174.1 | 274.2 | 25.9 |
| 2008/09 | 60.9 | 5.2 | 316.9 | 10.8 | 31.1 | 176.6 | 281.8 | 40.7 |
| 2009/10 | 58.9 | 5.0 | 297.3 | 8.2 | 25.3 | 172.3 | 278.0 | 42.9 |
| 2010/11 | 56.2 | 5.0 | 279.5 | 13.1 | 29.3 | 169.4 | 277.5 | 28.8 |
| 2011/12 | 56.0 | 5.1 | 288.1 | 14.3 | 23.3 | 170.7 | 278.7 | 29.3 |
| 2012/13 | 57.3 | 4.9 | 279.9 | 17.1 | 30.1 | 164.7 | 272.3 | 23.8 |
| 2013/14 | 57.3 | 5.3 | 303.5 | 20.2 | 40.7 | 171.4 | 281.4 | 25.5 |
| 2014/15 | 57.5 | 5.7 | 327.2 | 15.1 | 49.4 | 176.0 | 286.8 | 31.5 |
| 2015/16 | 57.2 | 5.4 | 308.7 | 22.4 | 42.4 | 176.6 | 287.2 | 33.0 |

China: Grain Supply and Demand

Wheat and Coarse Grains Millions of Metric Tons/Hectares

| | Area Harvested | Yield | Production | Imports | Exports | Feed Dom. | Domestic Consumption | Ending Stocks |
|--------------------------------|-----------------------|--------------|-------------------|----------------|----------------|------------------|-----------------------------|----------------------|
| Wheat | | | | | | | | |
| 2004/05 | 21.6 | 4.3 | 92.0 | 6.7 | 1.2 | 4.0 | 102.0 | 38.8 |
| 2005/06 | 22.8 | 4.3 | 97.4 | 1.1 | 1.4 | 3.5 | 101.5 | 34.5 |
| 2006/07 | 23.6 | 4.6 | 108.5 | 0.4 | 2.8 | 4.0 | 102.0 | 38.6 |
| 2007/08 | 23.7 | 4.6 | 109.3 | 0.0 | 2.8 | 8.0 | 106.0 | 39.1 |
| 2008/09 | 23.6 | 4.8 | 112.5 | 0.5 | 0.7 | 8.0 | 105.5 | 45.8 |
| 2009/10 | 24.3 | 4.7 | 115.1 | 1.4 | 0.9 | 10.0 | 107.0 | 54.4 |
| 2010/11 | 24.3 | 4.7 | 115.2 | 0.9 | 0.9 | 13.0 | 110.5 | 59.1 |
| 2011/12 | 24.3 | 4.8 | 117.4 | 2.9 | 1.0 | 24.0 | 122.5 | 55.9 |
| 2012/13 | 24.3 | 5.0 | 121.0 | 3.0 | 1.0 | 25.0 | 125.0 | 54.0 |
| 2013/14 | 24.1 | 5.1 | 121.9 | 6.8 | 0.9 | 16.0 | 116.5 | 65.3 |
| 2014/15 | 24.1 | 5.2 | 126.2 | 1.9 | 0.8 | 17.0 | 118.5 | 74.1 |
| 2015/16 | 24.1 | 5.4 | 130.2 | 2.0 | 1.0 | 15.0 | 118.0 | 87.3 |
| Coarse Grains | | | | | | | | |
| 2004/05 | 28.0 | 4.9 | 138.3 | 2.1 | 7.6 | 100.3 | 141.1 | 37.6 |
| 2005/06 | 28.8 | 5.1 | 147.8 | 2.3 | 3.8 | 103.5 | 147.1 | 36.9 |
| 2006/07 | 31.1 | 5.1 | 159.0 | 1.2 | 5.5 | 105.0 | 153.5 | 38.0 |
| 2007/08 | 31.9 | 5.0 | 159.2 | 1.2 | 0.9 | 106.7 | 157.9 | 39.5 |
| 2008/09 | 32.2 | 5.4 | 172.4 | 1.7 | 0.2 | 109.1 | 161.2 | 52.2 |
| 2009/10 | 33.4 | 5.1 | 169.8 | 3.8 | 0.2 | 119.1 | 173.3 | 52.3 |
| 2010/11 | 34.6 | 5.3 | 183.8 | 2.7 | 0.2 | 128.8 | 188.4 | 50.1 |
| 2011/12 | 35.5 | 5.6 | 198.6 | 7.9 | 0.1 | 132.0 | 196.2 | 60.4 |
| 2012/13 | 37.1 | 5.7 | 212.2 | 5.6 | 0.1 | 146.1 | 209.7 | 68.4 |
| 2013/14 | 38.3 | 5.9 | 225.4 | 12.4 | 0.0 | 157.8 | 223.5 | 82.7 |
| 2014/15 | 39.2 | 5.7 | 222.8 | 25.7 | 0.0 | 158.8 | 229.1 | 102.0 |
| 2015/16 | 40.2 | 5.8 | 231.6 | 16.8 | 0.1 | 163.1 | 235.5 | 114.8 |
| Wheat and Coarse Grains | | | | | | | | |
| 2004/05 | 49.6 | 4.6 | 230.2 | 8.8 | 8.8 | 104.3 | 243.1 | 76.4 |
| 2005/06 | 51.6 | 4.8 | 245.3 | 3.4 | 5.2 | 107.0 | 248.6 | 71.4 |
| 2006/07 | 54.7 | 4.9 | 267.4 | 1.5 | 8.2 | 109.0 | 255.5 | 76.6 |
| 2007/08 | 55.6 | 4.8 | 268.5 | 1.2 | 3.7 | 114.7 | 263.9 | 78.6 |
| 2008/09 | 55.8 | 5.1 | 284.9 | 2.1 | 0.9 | 117.1 | 266.7 | 98.0 |
| 2009/10 | 57.6 | 4.9 | 284.9 | 5.2 | 1.1 | 129.1 | 280.3 | 106.7 |
| 2010/11 | 58.9 | 5.1 | 299.0 | 3.6 | 1.1 | 141.8 | 298.9 | 109.2 |
| 2011/12 | 59.8 | 5.3 | 316.0 | 10.9 | 1.1 | 156.0 | 318.7 | 116.3 |
| 2012/13 | 61.3 | 5.4 | 333.2 | 8.6 | 1.1 | 171.1 | 334.7 | 122.3 |
| 2013/14 | 62.4 | 5.6 | 347.3 | 19.2 | 0.9 | 173.8 | 340.0 | 147.9 |
| 2014/15 | 63.3 | 5.5 | 349.0 | 27.6 | 0.8 | 175.8 | 347.6 | 176.1 |
| 2015/16 | 64.3 | 5.6 | 361.8 | 18.8 | 1.1 | 178.1 | 353.5 | 202.1 |

Other Europe: Grain Supply and Demand

Wheat and Coarse Grains Millions of Metric Tons/Hectares

| | Area Harvested | Yield | Production | Imports | Exports | Feed Dom. | Domestic Consumption | Ending Stocks |
|--------------------------------|-----------------------|--------------|-------------------|----------------|----------------|------------------|-----------------------------|----------------------|
| Wheat | | | | | | | | |
| 2004/05 | 1.1 | 4.3 | 4.6 | 1.4 | 0.3 | 0.9 | 5.2 | 1.3 |
| 2005/06 | 1.0 | 3.8 | 3.8 | 1.4 | 0.2 | 0.9 | 5.1 | 1.1 |
| 2006/07 | 1.0 | 3.6 | 3.5 | 1.5 | 0.3 | 0.7 | 4.6 | 1.2 |
| 2007/08 | 1.0 | 3.8 | 3.7 | 1.9 | 0.5 | 1.0 | 4.8 | 1.5 |
| 2008/09 | 0.9 | 4.4 | 4.0 | 1.7 | 0.4 | 1.2 | 5.1 | 1.7 |
| 2009/10 | 1.0 | 3.9 | 3.8 | 1.7 | 0.5 | 1.0 | 4.9 | 1.7 |
| 2010/11 | 0.9 | 3.7 | 3.2 | 1.7 | 0.6 | 0.8 | 4.7 | 1.3 |
| 2011/12 | 0.9 | 4.2 | 3.6 | 1.9 | 0.5 | 1.0 | 4.9 | 1.5 |
| 2012/13 | 0.9 | 4.0 | 3.4 | 1.7 | 0.7 | 1.0 | 4.7 | 1.1 |
| 2013/14 | 0.9 | 4.4 | 4.1 | 1.9 | 1.3 | 1.1 | 4.8 | 1.1 |
| 2014/15 | 0.9 | 4.2 | 3.9 | 1.7 | 0.7 | 1.1 | 4.8 | 1.2 |
| 2015/16 | 1.0 | 4.3 | 4.1 | 1.9 | 1.1 | 1.1 | 4.9 | 1.3 |
| Coarse Grains | | | | | | | | |
| 2004/05 | 2.1 | 5.0 | 10.4 | 0.5 | 0.6 | 8.4 | 9.5 | 1.5 |
| 2005/06 | 2.1 | 4.8 | 10.1 | 0.6 | 1.3 | 8.5 | 9.7 | 1.3 |
| 2006/07 | 2.0 | 4.9 | 9.8 | 0.8 | 0.9 | 8.5 | 9.6 | 1.3 |
| 2007/08 | 2.0 | 3.4 | 6.9 | 0.9 | 0.1 | 6.8 | 7.9 | 1.1 |
| 2008/09 | 2.1 | 4.6 | 9.7 | 0.6 | 1.5 | 7.6 | 8.7 | 1.1 |
| 2009/10 | 2.0 | 4.9 | 9.7 | 0.7 | 1.4 | 7.5 | 8.7 | 1.4 |
| 2010/11 | 2.0 | 5.0 | 10.0 | 0.7 | 2.0 | 7.3 | 8.7 | 1.5 |
| 2011/12 | 2.1 | 4.6 | 9.5 | 0.8 | 2.4 | 7.0 | 8.4 | 1.0 |
| 2012/13 | 2.1 | 3.2 | 6.6 | 0.7 | 0.6 | 5.9 | 7.1 | 0.6 |
| 2013/14 | 2.0 | 4.4 | 8.8 | 0.9 | 1.8 | 6.3 | 7.7 | 0.8 |
| 2014/15 | 1.9 | 5.5 | 10.7 | 0.8 | 3.0 | 6.5 | 8.0 | 1.2 |
| 2015/16 | 1.9 | 4.4 | 8.4 | 0.9 | 1.7 | 6.5 | 8.0 | 0.8 |
| Wheat and Coarse Grains | | | | | | | | |
| 2004/05 | 3.2 | 4.8 | 15.1 | 1.9 | 0.9 | 9.3 | 14.8 | 2.8 |
| 2005/06 | 3.1 | 4.5 | 13.9 | 2.0 | 1.4 | 9.4 | 14.8 | 2.4 |
| 2006/07 | 3.0 | 4.5 | 13.3 | 2.3 | 1.2 | 9.2 | 14.2 | 2.5 |
| 2007/08 | 3.0 | 3.5 | 10.6 | 2.7 | 0.6 | 7.8 | 12.6 | 2.6 |
| 2008/09 | 3.0 | 4.6 | 13.7 | 2.3 | 1.9 | 8.8 | 13.8 | 2.8 |
| 2009/10 | 3.0 | 4.5 | 13.5 | 2.4 | 1.9 | 8.5 | 13.7 | 3.2 |
| 2010/11 | 2.9 | 4.6 | 13.2 | 2.4 | 2.6 | 8.1 | 13.4 | 2.7 |
| 2011/12 | 2.9 | 4.5 | 13.1 | 2.7 | 2.8 | 8.1 | 13.2 | 2.5 |
| 2012/13 | 2.9 | 3.4 | 10.0 | 2.4 | 1.3 | 7.0 | 11.8 | 1.8 |
| 2013/14 | 2.9 | 4.4 | 12.9 | 2.8 | 3.1 | 7.4 | 12.5 | 1.9 |
| 2014/15 | 2.9 | 5.1 | 14.6 | 2.5 | 3.7 | 7.6 | 12.8 | 2.4 |
| 2015/16 | 2.9 | 4.4 | 12.6 | 2.8 | 2.8 | 7.6 | 12.9 | 2.1 |

Former Soviet Union: Grain Supply and Demand
Wheat and Coarse Grains Millions of Metric Tons/Hectares

| | Area Harvested | Yield | Production | Imports | Exports | Feed Dom. | Domestic Consumpti | Ending Stocks |
|----------------------|-----------------------|--------------|-------------------|----------------|----------------|------------------|---------------------------|----------------------|
| Wheat | | | | | | | | |
| 2009/10 | 52.6 | 2.2 | 114.0 | 5.4 | 37.3 | 26.6 | 78.3 | 26.0 |
| 2010/11 | 45.8 | 1.8 | 81.0 | 5.5 | 13.9 | 24.4 | 75.6 | 23.1 |
| 2011/12 | 49.7 | 2.3 | 115.0 | 8.0 | 39.7 | 28.4 | 80.0 | 26.4 |
| 2012/13 | 44.0 | 1.8 | 77.8 | 7.2 | 25.4 | 21.6 | 71.7 | 14.3 |
| 2013/14 | 47.7 | 2.2 | 103.9 | 7.4 | 37.1 | 22.7 | 72.8 | 15.7 |
| 2014/15 | 46.7 | 2.4 | 112.7 | 7.7 | 40.2 | 24.7 | 75.9 | 20.0 |
| 2015/16 | 48.8 | 2.4 | 117.5 | 7.3 | 46.4 | 26.0 | 78.3 | 20.2 |
| Coarse Grains | | | | | | | | |
| 2009/10 | 27.2 | 2.5 | 67.6 | 0.4 | 15.0 | 39.0 | 55.0 | 7.4 |
| 2010/11 | 21.9 | 2.2 | 47.5 | 1.1 | 8.8 | 28.4 | 41.8 | 5.5 |
| 2011/12 | 27.0 | 2.9 | 78.6 | 1.0 | 24.6 | 38.6 | 54.4 | 6.2 |
| 2012/13 | 27.5 | 2.5 | 68.2 | 0.7 | 19.9 | 35.6 | 50.2 | 5.0 |
| 2013/14 | 29.4 | 3.0 | 87.7 | 0.8 | 30.8 | 40.0 | 55.7 | 7.1 |
| 2014/15 | 30.3 | 3.0 | 91.8 | 0.8 | 33.9 | 42.0 | 58.0 | 7.9 |
| 2015/16 | 28.0 | 2.9 | 82.0 | 0.8 | 28.4 | 40.8 | 56.2 | 6.1 |

Former Soviet Union: Grain Supply and Demand (Wheat)

Millions of Tons/Hectares

| Country Mktg Year | Area Harvested | Yield | Production | MY Imports | MY Exports | Feed and Residual | Total Consumption | Ending Stocks |
|---------------------------------------|----------------|-------|------------|------------|------------|-------------------|-------------------|---------------|
| Former Soviet Union - 12 | | | | | | | | |
| Kazakhstan | | | | | | | | |
| 2012/13 | 12.4 | 0.8 | 9.8 | 0.0 | 6.3 | 2.0 | 6.8 | 2.9 |
| 2013/14 | 13.0 | 1.1 | 13.9 | 0.0 | 8.1 | 2.0 | 6.8 | 2.0 |
| 2014/15 | 11.9 | 1.1 | 13.0 | 0.6 | 5.5 | 2.0 | 6.8 | 3.2 |
| 2015/16 | 11.5 | 1.2 | 14.0 | 0.1 | 6.5 | 2.1 | 6.9 | 3.9 |
| Russia | | | | | | | | |
| 2012/13 | 21.3 | 1.8 | 37.7 | 1.2 | 11.3 | 11.9 | 33.6 | 5.0 |
| 2013/14 | 23.4 | 2.2 | 52.1 | 0.8 | 18.6 | 12.5 | 34.1 | 5.2 |
| 2014/15 | 23.6 | 2.5 | 59.1 | 0.3 | 22.8 | 13.0 | 35.5 | 6.3 |
| 2015/16 | 25.6 | 2.4 | 61.0 | 0.4 | 23.5 | 14.0 | 37.0 | 7.1 |
| Ukraine | | | | | | | | |
| 2012/13 | 5.6 | 2.8 | 15.8 | 0.0 | 7.2 | 3.1 | 11.4 | 2.6 |
| 2013/14 | 6.6 | 3.4 | 22.3 | 0.1 | 9.8 | 3.4 | 11.5 | 3.7 |
| 2014/15 | 6.3 | 3.9 | 24.8 | 0.0 | 11.3 | 4.0 | 12.0 | 5.2 |
| 2015/16 | 7.0 | 3.9 | 27.0 | 0.1 | 15.5 | 4.5 | 12.5 | 4.2 |
| Uzbekistan | | | | | | | | |
| 2012/13 | 1.4 | 4.8 | 6.7 | 1.9 | 0.4 | 1.7 | 8.0 | 1.6 |
| 2013/14 | 1.4 | 4.9 | 6.8 | 2.2 | 0.3 | 1.9 | 8.4 | 1.9 |
| 2014/15 | 1.4 | 5.1 | 7.2 | 2.2 | 0.2 | 2.2 | 8.9 | 2.2 |
| 2015/16 | 1.4 | 5.1 | 7.2 | 2.4 | 0.2 | 2.2 | 9.3 | 2.3 |
| Other Former Soviet Union - 12 | | | | | | | | |
| 2012/13 | 3.2 | 2.4 | 7.8 | 4.1 | 0.3 | 2.9 | 12.0 | 2.2 |
| 2013/14 | 3.4 | 2.6 | 8.8 | 4.3 | 0.4 | 2.9 | 12.0 | 2.9 |
| 2014/15 | 3.4 | 2.6 | 8.8 | 4.5 | 0.4 | 3.5 | 12.7 | 3.1 |
| 2015/16 | 3.3 | 2.5 | 8.3 | 4.5 | 0.7 | 3.2 | 12.6 | 2.6 |
| Total Former Soviet Union - 12 | | | | | | | | |
| 2012/13 | 44.0 | 1.8 | 77.8 | 7.2 | 25.4 | 21.6 | 71.7 | 14.3 |
| 2013/14 | 47.7 | 2.2 | 103.9 | 7.4 | 37.1 | 22.7 | 72.8 | 15.7 |
| 2014/15 | 46.7 | 2.4 | 112.7 | 7.7 | 40.2 | 24.7 | 75.9 | 20.0 |
| 2015/16 | 48.8 | 2.4 | 117.5 | 7.3 | 46.4 | 26.0 | 78.3 | 20.2 |

Former Soviet Union: Grain Supply and Demand (Barley)

Millions of Tons/Hectares

| Country Mktg Year | Area Harvested | Yield | Production | MY Imports | MY Exports | Feed and Residual | Total Consumption | Ending Stocks |
|---------------------------------------|----------------|-------|------------|------------|------------|-------------------|-------------------|---------------|
| Former Soviet Union - 12 | | | | | | | | |
| Kazakhstan | | | | | | | | |
| 2012/13 | 1.6 | 0.9 | 1.5 | 0.0 | 0.2 | 1.2 | 1.4 | 0.2 |
| 2013/14 | 1.8 | 1.4 | 2.5 | 0.0 | 0.4 | 1.7 | 2.0 | 0.3 |
| 2014/15 | 1.9 | 1.3 | 2.4 | 0.0 | 0.5 | 1.7 | 2.0 | 0.2 |
| 2015/16 | 2.0 | 1.3 | 2.6 | 0.0 | 0.5 | 1.8 | 2.1 | 0.2 |
| Russia | | | | | | | | |
| 2012/13 | 7.6 | 1.8 | 14.0 | 0.3 | 2.2 | 7.7 | 12.1 | 0.7 |
| 2013/14 | 8.0 | 1.9 | 15.4 | 0.2 | 2.7 | 8.3 | 12.7 | 0.9 |
| 2014/15 | 8.8 | 2.3 | 20.0 | 0.0 | 5.3 | 9.2 | 14.1 | 1.6 |
| 2015/16 | 8.1 | 2.1 | 17.1 | 0.1 | 3.7 | 9.1 | 13.9 | 1.2 |
| Ukraine | | | | | | | | |
| 2012/13 | 3.3 | 2.1 | 6.9 | 0.0 | 2.1 | 3.5 | 5.1 | 0.9 |
| 2013/14 | 3.2 | 2.3 | 7.6 | 0.0 | 2.5 | 3.5 | 5.0 | 1.0 |
| 2014/15 | 3.2 | 3.0 | 9.5 | 0.0 | 4.5 | 3.0 | 4.5 | 1.5 |
| 2015/16 | 2.9 | 3.0 | 8.7 | 0.0 | 4.5 | 3.0 | 4.5 | 1.2 |
| Uzbekistan | | | | | | | | |
| 2012/13 | 0.1 | 3.2 | 0.2 | 0.0 | 0.0 | 0.2 | 0.3 | 0.0 |
| 2013/14 | 0.1 | 3.2 | 0.2 | 0.0 | 0.0 | 0.2 | 0.3 | 0.0 |
| 2014/15 | 0.1 | 3.2 | 0.2 | 0.1 | 0.0 | 0.2 | 0.3 | 0.0 |
| 2015/16 | 0.1 | 3.2 | 0.2 | 0.1 | 0.0 | 0.3 | 0.3 | 0.0 |
| Other Former Soviet Union - 12 | | | | | | | | |
| 2012/13 | 1.2 | 2.8 | 3.3 | 0.1 | 0.0 | 2.7 | 3.5 | 0.4 |
| 2013/14 | 1.3 | 2.5 | 3.4 | 0.1 | 0.0 | 2.7 | 3.5 | 0.4 |
| 2014/15 | 1.4 | 2.7 | 3.7 | 0.2 | 0.1 | 2.9 | 3.7 | 0.5 |
| 2015/16 | 1.4 | 2.6 | 3.6 | 0.2 | 0.1 | 3.1 | 3.9 | 0.3 |
| Total Former Soviet Union - 12 | | | | | | | | |
| 2012/13 | 13.8 | 1.9 | 26.0 | 0.4 | 4.6 | 15.2 | 22.3 | 2.2 |
| 2013/14 | 14.5 | 2.0 | 29.2 | 0.3 | 5.6 | 16.4 | 23.5 | 2.6 |
| 2014/15 | 15.3 | 2.3 | 35.8 | 0.3 | 10.3 | 17.0 | 24.6 | 3.8 |
| 2015/16 | 14.4 | 2.2 | 32.3 | 0.3 | 8.8 | 17.3 | 24.8 | 2.9 |

Former Soviet Union: Grain Supply and Demand (Corn)

Millions of Tons/Hectares

| Country Mktg Year | Area Harvested | Yield | Production | MY Imports | MY Exports | Feed and Residual | Total Consumption | Ending Stocks |
|---------------------------------------|----------------|-------|------------|------------|------------|-------------------|-------------------|---------------|
| Former Soviet Union - 12 | | | | | | | | |
| Kazakhstan | | | | | | | | |
| 2012/13 | 0.1 | 5.0 | 0.5 | 0.0 | 0.0 | 0.4 | 0.5 | 0.0 |
| 2013/14 | 0.1 | 5.3 | 0.6 | 0.0 | 0.0 | 0.5 | 0.6 | 0.0 |
| 2014/15 | 0.1 | 5.3 | 0.7 | 0.0 | 0.0 | 0.5 | 0.6 | 0.1 |
| 2015/16 | 0.1 | 5.0 | 0.5 | 0.0 | 0.0 | 0.5 | 0.6 | 0.0 |
| Russia | | | | | | | | |
| 2012/13 | 1.9 | 4.2 | 8.2 | 0.1 | 1.9 | 5.6 | 6.4 | 0.3 |
| 2013/14 | 2.3 | 5.0 | 11.6 | 0.1 | 4.2 | 6.6 | 7.5 | 0.3 |
| 2014/15 | 2.6 | 4.4 | 11.3 | 0.0 | 3.2 | 7.2 | 8.1 | 0.4 |
| 2015/16 | 2.7 | 4.9 | 13.0 | 0.1 | 3.8 | 8.2 | 9.2 | 0.4 |
| Ukraine | | | | | | | | |
| 2012/13 | 4.4 | 4.8 | 20.9 | 0.0 | 12.7 | 6.8 | 8.1 | 1.2 |
| 2013/14 | 4.8 | 6.4 | 30.9 | 0.1 | 20.0 | 8.3 | 9.7 | 2.5 |
| 2014/15 | 4.6 | 6.2 | 28.5 | 0.0 | 19.7 | 8.0 | 9.4 | 1.9 |
| 2015/16 | 4.1 | 5.7 | 23.5 | 0.1 | 15.5 | 7.0 | 8.4 | 1.5 |
| Uzbekistan | | | | | | | | |
| 2012/13 | 0.0 | 3.4 | 0.1 | 0.0 | 0.0 | 0.1 | 0.1 | 0.0 |
| 2013/14 | 0.0 | 3.4 | 0.1 | 0.0 | 0.0 | 0.1 | 0.1 | 0.0 |
| 2014/15 | 0.0 | 3.4 | 0.1 | 0.0 | 0.0 | 0.1 | 0.1 | 0.0 |
| 2015/16 | 0.0 | 3.4 | 0.1 | 0.0 | 0.0 | 0.1 | 0.1 | 0.0 |
| Other Former Soviet Union - 12 | | | | | | | | |
| 2012/13 | 1.0 | 2.7 | 2.6 | 0.2 | 0.4 | 2.6 | 3.0 | 0.5 |
| 2013/14 | 1.0 | 3.8 | 3.7 | 0.3 | 0.6 | 2.9 | 3.2 | 0.6 |
| 2014/15 | 0.9 | 3.7 | 3.2 | 0.4 | 0.3 | 2.9 | 3.2 | 0.7 |
| 2015/16 | 0.9 | 3.1 | 2.8 | 0.4 | 0.1 | 2.8 | 3.2 | 0.6 |
| Total Former Soviet Union - 12 | | | | | | | | |
| 2012/13 | 7.4 | 4.4 | 32.3 | 0.3 | 15.0 | 15.5 | 18.1 | 2.0 |
| 2013/14 | 8.3 | 5.7 | 46.9 | 0.4 | 24.8 | 18.4 | 21.1 | 3.4 |
| 2014/15 | 8.2 | 5.3 | 43.7 | 0.5 | 23.2 | 18.7 | 21.4 | 3.1 |
| 2015/16 | 7.8 | 5.1 | 39.9 | 0.5 | 19.4 | 18.6 | 21.5 | 2.5 |

Wheat Supply and Disappearance: Selected Exporters
Million Metric Tons/Hectares

| Country Mktg Year | Area Harvested | Yield | Production | MY Imports | MY Exports | Feed and Residual | Total Consumption | Ending Stocks |
|--------------------------|----------------|-------|------------|------------|------------|-------------------|-------------------|---------------|
| Wheat Competitors | | | | | | | | |
| Argentina | | | | | | | | |
| 2011/12 | 5.2 | 3.0 | 15.5 | 0.0 | 12.9 | 0.1 | 6.0 | 0.7 |
| 2012/13 | 3.6 | 2.6 | 9.3 | 0.0 | 3.6 | 0.3 | 6.2 | 0.3 |
| 2013/14 | 3.5 | 3.0 | 10.5 | 0.0 | 2.3 | 0.1 | 6.1 | 2.5 |
| 2014/15 | 4.2 | 3.0 | 12.5 | 0.0 | 5.5 | 0.3 | 6.4 | 3.2 |
| 2015/16 | 3.5 | 3.0 | 10.5 | 0.0 | 6.0 | 0.1 | 6.2 | 1.6 |
| Australia | | | | | | | | |
| 2011/12 | 13.9 | 2.2 | 29.9 | 0.1 | 24.7 | 3.2 | 6.5 | 7.1 |
| 2012/13 | 13.0 | 1.8 | 22.9 | 0.1 | 18.6 | 3.4 | 6.7 | 4.7 |
| 2013/14 | 12.6 | 2.0 | 25.3 | 0.2 | 18.6 | 3.6 | 7.0 | 4.6 |
| 2014/15 | 13.8 | 1.7 | 23.7 | 0.2 | 16.6 | 4.1 | 7.5 | 4.3 |
| 2015/16 | 13.8 | 1.9 | 26.0 | 0.2 | 18.0 | 4.0 | 7.4 | 5.0 |
| Canada | | | | | | | | |
| 2011/12 | 8.6 | 3.0 | 25.3 | 0.5 | 17.4 | 4.7 | 9.9 | 5.9 |
| 2012/13 | 9.5 | 2.9 | 27.2 | 0.5 | 19.0 | 4.3 | 9.5 | 5.1 |
| 2013/14 | 10.4 | 3.6 | 37.5 | 0.4 | 23.3 | 4.2 | 9.4 | 10.4 |
| 2014/15 | 9.5 | 3.1 | 29.4 | 0.5 | 24.1 | 3.8 | 9.1 | 7.1 |
| 2015/16 | 9.6 | 2.9 | 27.6 | 0.5 | 20.5 | 3.8 | 9.0 | 5.7 |
| European Union | | | | | | | | |
| 2011/12 | 25.8 | 5.3 | 138.2 | 7.4 | 16.7 | 57.5 | 127.2 | 13.5 |
| 2012/13 | 26.0 | 5.2 | 133.9 | 5.3 | 22.8 | 51.0 | 119.3 | 10.7 |
| 2013/14 | 25.9 | 5.6 | 144.6 | 4.0 | 32.0 | 49.0 | 117.3 | 9.9 |
| 2014/15 | 26.8 | 5.8 | 156.5 | 6.0 | 35.4 | 54.5 | 123.5 | 13.5 |
| 2015/16 | 26.7 | 5.9 | 158.0 | 6.0 | 32.5 | 57.0 | 125.8 | 19.3 |
| Kazakhstan | | | | | | | | |
| 2011/12 | 13.7 | 1.7 | 22.7 | 0.0 | 11.8 | 2.6 | 7.6 | 6.2 |
| 2012/13 | 12.4 | 0.8 | 9.8 | 0.0 | 6.3 | 2.0 | 6.8 | 2.9 |
| 2013/14 | 13.0 | 1.1 | 13.9 | 0.0 | 8.1 | 2.0 | 6.8 | 2.0 |
| 2014/15 | 11.9 | 1.1 | 13.0 | 0.6 | 5.5 | 2.0 | 6.8 | 3.2 |
| 2015/16 | 11.5 | 1.2 | 14.0 | 0.1 | 6.5 | 2.1 | 6.9 | 3.9 |
| Russia | | | | | | | | |
| 2011/12 | 24.8 | 2.3 | 56.2 | 0.6 | 21.6 | 15.5 | 38.0 | 10.9 |
| 2012/13 | 21.3 | 1.8 | 37.7 | 1.2 | 11.3 | 11.9 | 33.6 | 5.0 |
| 2013/14 | 23.4 | 2.2 | 52.1 | 0.8 | 18.6 | 12.5 | 34.1 | 5.2 |
| 2014/15 | 23.6 | 2.5 | 59.1 | 0.3 | 22.8 | 13.0 | 35.5 | 6.3 |
| 2015/16 | 25.6 | 2.4 | 61.0 | 0.4 | 23.5 | 14.0 | 37.0 | 7.1 |

Wheat Supply and Disappearance: Selected Exporters (Continued)

Million Metric Tons/Hectares

| Country Mktg Year | Area Harvested | Yield | Production | MY Imports | MY Exports | Feed and Residual | Total Consumption | Ending Stocks |
|--------------------------------|----------------|-------|------------|------------|------------|-------------------|-------------------|---------------|
| Ukraine | | | | | | | | |
| 2011/12 | 6.7 | 3.4 | 22.3 | 0.1 | 5.4 | 6.1 | 15.0 | 5.4 |
| 2012/13 | 5.6 | 2.8 | 15.8 | 0.0 | 7.2 | 3.1 | 11.4 | 2.6 |
| 2013/14 | 6.6 | 3.4 | 22.3 | 0.1 | 9.8 | 3.4 | 11.5 | 3.7 |
| 2014/15 | 6.3 | 3.9 | 24.8 | 0.0 | 11.3 | 4.0 | 12.0 | 5.2 |
| 2015/16 | 7.0 | 3.9 | 27.0 | 0.1 | 15.5 | 4.5 | 12.5 | 4.2 |
| Total Wheat Competitors | | | | | | | | |
| 2011/12 | 98.6 | 3.1 | 310.2 | 8.6 | 110.6 | 89.7 | 210.1 | 49.7 |
| 2012/13 | 91.4 | 2.8 | 256.6 | 7.1 | 88.7 | 76.0 | 193.5 | 31.3 |
| 2013/14 | 95.4 | 3.2 | 306.2 | 5.5 | 112.6 | 74.8 | 192.1 | 38.3 |
| 2014/15 | 96.1 | 3.3 | 318.9 | 7.6 | 121.2 | 81.7 | 200.8 | 42.8 |
| 2015/16 | 97.7 | 3.3 | 324.1 | 7.1 | 122.5 | 85.5 | 204.7 | 46.8 |

Corn Supply and Disappearance: Selected Exporters
Million Metric Tons/Hectares

| Country Mktg Year | Area Harvested | Yield | Production | MY Imports | MY Exports | Feed and Residual | Total Consumption | Ending Stocks |
|---------------------|----------------|-------|------------|------------|------------|-------------------|-------------------|---------------|
| Argentina | | | | | | | | |
| 2007/08 | 3.4 | 6.5 | 22.0 | 0.0 | 14.8 | 4.9 | 6.8 | 2.1 |
| 2008/09 | 2.5 | 6.2 | 15.5 | 0.0 | 10.3 | 4.5 | 6.4 | 0.9 |
| 2009/10 | 3.0 | 8.3 | 25.0 | 0.0 | 16.5 | 5.0 | 6.9 | 2.5 |
| 2010/11 | 3.8 | 6.7 | 25.2 | 0.0 | 16.3 | 5.3 | 7.3 | 4.0 |
| 2011/12 | 3.6 | 5.8 | 21.0 | 0.0 | 17.1 | 4.8 | 7.0 | 0.9 |
| 2012/13 | 4.0 | 6.8 | 27.0 | 0.0 | 18.7 | 5.3 | 7.9 | 1.3 |
| 2013/14 | 3.4 | 7.6 | 26.0 | 0.0 | 17.1 | 5.8 | 8.8 | 1.4 |
| 2014/15 | 3.2 | 8.3 | 26.5 | 0.0 | 17.5 | 6.0 | 9.3 | 1.1 |
| 2015/16 | 3.2 | 8.0 | 25.6 | 0.0 | 16.0 | 6.3 | 9.8 | 0.9 |
| Brazil | | | | | | | | |
| 2007/08 | 14.7 | 4.0 | 58.6 | 0.7 | 7.8 | 37.5 | 44.0 | 10.6 |
| 2008/09 | 14.1 | 3.6 | 51.0 | 1.1 | 7.1 | 38.5 | 45.5 | 10.1 |
| 2009/10 | 12.9 | 4.3 | 56.1 | 0.4 | 11.6 | 41.5 | 48.5 | 6.5 |
| 2010/11 | 13.8 | 4.2 | 57.4 | 0.8 | 8.4 | 43.0 | 50.0 | 6.3 |
| 2011/12 | 15.2 | 4.8 | 73.0 | 0.8 | 24.3 | 44.0 | 51.5 | 4.2 |
| 2012/13 | 15.8 | 5.2 | 81.5 | 0.9 | 24.9 | 44.5 | 52.5 | 9.2 |
| 2013/14 | 15.8 | 5.1 | 80.0 | 0.8 | 21.0 | 46.0 | 55.0 | 14.0 |
| 2014/15 | 15.8 | 5.4 | 85.0 | 0.6 | 32.5 | 48.0 | 57.0 | 10.1 |
| 2015/16 | 15.8 | 5.2 | 81.5 | 0.6 | 25.5 | 50.0 | 59.0 | 7.7 |
| China | | | | | | | | |
| 2007/08 | 29.5 | 5.2 | 152.3 | 0.0 | 0.5 | 106.0 | 150.0 | 38.4 |
| 2008/09 | 29.9 | 5.6 | 165.9 | 0.0 | 0.2 | 108.0 | 153.0 | 51.2 |
| 2009/10 | 31.2 | 5.3 | 164.0 | 1.3 | 0.2 | 118.0 | 165.0 | 51.3 |
| 2010/11 | 32.5 | 5.5 | 177.2 | 1.0 | 0.1 | 128.0 | 180.0 | 49.4 |
| 2011/12 | 33.5 | 5.7 | 192.8 | 5.2 | 0.1 | 131.0 | 188.0 | 59.3 |
| 2012/13 | 35.0 | 5.9 | 205.6 | 2.7 | 0.1 | 144.0 | 200.0 | 67.6 |
| 2013/14 | 36.3 | 6.0 | 218.5 | 3.3 | 0.0 | 150.0 | 208.0 | 81.3 |
| 2014/15 | 37.1 | 5.8 | 215.6 | 5.5 | 0.0 | 140.0 | 202.0 | 100.5 |
| 2015/16 | 38.1 | 5.9 | 224.6 | 2.5 | 0.1 | 150.0 | 214.0 | 113.5 |
| South Africa | | | | | | | | |
| 2007/08 | 3.3 | 4.0 | 13.2 | 0.0 | 2.2 | 4.8 | 10.1 | 1.4 |
| 2008/09 | 2.9 | 4.3 | 12.6 | 0.0 | 1.7 | 4.7 | 10.3 | 2.0 |
| 2009/10 | 3.3 | 4.1 | 13.4 | 0.0 | 2.1 | 4.9 | 10.6 | 2.8 |
| 2010/11 | 2.9 | 3.8 | 10.9 | 0.4 | 2.4 | 5.0 | 10.7 | 1.0 |
| 2011/12 | 3.1 | 4.1 | 12.8 | 0.0 | 1.8 | 5.0 | 10.7 | 1.3 |
| 2012/13 | 3.2 | 3.8 | 12.4 | 0.1 | 2.1 | 5.1 | 11.0 | 0.7 |

Corn Supply and Disappearance: Selected Exporters (Continued)

Million Metric Tons/Hectares

| Country Mktg Year | Area Harvested | Yield | Production | MY Imports | MY Exports | Feed and Residual | Total Consumption | Ending Stocks |
|-------------------------------|----------------|-------|------------|------------|------------|-------------------|-------------------|---------------|
| 2013/14 | 3.1 | 4.9 | 14.9 | 0.1 | 2.0 | 5.5 | 11.5 | 2.2 |
| 2014/15 | 3.0 | 3.5 | 10.8 | 1.2 | 0.7 | 5.5 | 11.2 | 2.3 |
| 2015/16 | 2.2 | 3.6 | 8.0 | 1.5 | 0.2 | 5.0 | 10.7 | 0.9 |
| Total Corn Competitors | | | | | | | | |
| 2007/08 | 50.9 | 4.8 | 246.1 | 0.8 | 25.3 | 153.2 | 210.9 | 52.5 |
| 2008/09 | 49.4 | 5.0 | 245.0 | 1.2 | 19.3 | 155.7 | 215.2 | 64.2 |
| 2009/10 | 50.4 | 5.1 | 258.5 | 1.7 | 30.3 | 169.4 | 231.0 | 63.0 |
| 2010/11 | 52.9 | 5.1 | 270.8 | 2.2 | 27.3 | 181.3 | 248.0 | 60.7 |
| 2011/12 | 55.5 | 5.4 | 299.5 | 6.0 | 43.4 | 184.8 | 257.2 | 65.7 |
| 2012/13 | 58.1 | 5.6 | 326.5 | 3.7 | 45.8 | 198.9 | 271.4 | 78.7 |
| 2013/14 | 58.6 | 5.8 | 339.4 | 4.1 | 40.0 | 207.3 | 283.3 | 98.9 |
| 2014/15 | 59.1 | 5.7 | 337.9 | 7.3 | 50.7 | 199.5 | 279.5 | 114.0 |
| 2015/16 | 59.3 | 5.7 | 339.7 | 4.6 | 41.8 | 211.3 | 293.5 | 123.0 |

Barley Supply and Disappearance: Selected Exporters
Million Metric Tons/Hectares

| Country Mktg Year | Area Harvested | Yield | Production | MY Imports | MY Exports | Feed and Residual | Total Consumption | Ending Stocks |
|-----------------------|----------------|-------|------------|------------|------------|-------------------|-------------------|---------------|
| Australia | | | | | | | | |
| 2007/08 | 4.9 | 1.5 | 7.2 | 0.0 | 3.4 | 2.1 | 3.1 | 1.7 |
| 2008/09 | 5.0 | 1.6 | 8.0 | 0.0 | 3.2 | 2.9 | 4.0 | 2.4 |
| 2009/10 | 4.4 | 1.8 | 7.9 | 0.0 | 3.9 | 3.3 | 4.5 | 1.9 |
| 2010/11 | 3.7 | 2.2 | 8.0 | 0.0 | 4.7 | 3.0 | 4.2 | 1.0 |
| 2011/12 | 3.7 | 2.2 | 8.2 | 0.0 | 5.4 | 2.1 | 3.3 | 0.5 |
| 2012/13 | 3.6 | 2.1 | 7.5 | 0.0 | 4.5 | 1.8 | 3.0 | 0.5 |
| 2013/14 | 3.8 | 2.4 | 9.2 | 0.0 | 6.2 | 1.5 | 2.8 | 0.7 |
| 2014/15 | 3.8 | 2.1 | 8.0 | 0.0 | 5.2 | 1.3 | 2.6 | 0.9 |
| 2015/16 | 4.0 | 2.2 | 8.7 | 0.0 | 6.0 | 1.3 | 2.6 | 1.0 |
| Canada | | | | | | | | |
| 2007/08 | 4.0 | 2.8 | 10.9 | 0.1 | 3.0 | 6.4 | 7.8 | 1.6 |
| 2008/09 | 3.5 | 3.4 | 11.8 | 0.0 | 1.5 | 7.6 | 8.9 | 3.0 |
| 2009/10 | 2.9 | 3.3 | 9.5 | 0.0 | 1.3 | 7.5 | 8.7 | 2.5 |
| 2010/11 | 2.4 | 3.2 | 7.6 | 0.0 | 1.2 | 6.3 | 7.5 | 1.5 |
| 2011/12 | 2.4 | 3.3 | 7.9 | 0.0 | 1.3 | 5.7 | 6.9 | 1.2 |
| 2012/13 | 2.8 | 2.9 | 8.0 | 0.0 | 1.4 | 5.7 | 6.8 | 1.0 |
| 2013/14 | 2.7 | 3.9 | 10.2 | 0.0 | 1.6 | 6.5 | 7.7 | 2.0 |
| 2014/15 | 2.1 | 3.3 | 7.1 | 0.1 | 1.5 | 5.2 | 6.5 | 1.2 |
| 2015/16 | 2.4 | 3.5 | 8.2 | 0.1 | 1.5 | 5.2 | 6.5 | 1.5 |
| European Union | | | | | | | | |
| 2007/08 | 13.9 | 4.2 | 57.8 | 0.3 | 3.8 | 38.9 | 54.5 | 5.7 |
| 2008/09 | 14.6 | 4.5 | 65.8 | 0.3 | 3.6 | 41.7 | 57.3 | 11.0 |
| 2009/10 | 14.0 | 4.5 | 62.4 | 0.1 | 1.1 | 41.7 | 56.8 | 15.6 |
| 2010/11 | 12.5 | 4.3 | 53.7 | 0.2 | 4.9 | 41.3 | 56.6 | 7.9 |
| 2011/12 | 11.9 | 4.3 | 51.9 | 0.5 | 3.0 | 35.8 | 51.2 | 6.1 |
| 2012/13 | 12.5 | 4.4 | 54.9 | 0.1 | 4.9 | 35.5 | 51.0 | 5.1 |
| 2013/14 | 12.4 | 4.8 | 59.7 | 0.0 | 5.7 | 38.0 | 53.4 | 5.6 |
| 2014/15 | 12.4 | 4.9 | 60.5 | 0.1 | 9.5 | 35.5 | 51.0 | 5.6 |
| 2015/16 | 12.3 | 4.9 | 61.0 | 0.3 | 8.6 | 37.5 | 53.1 | 5.2 |

Sorghum Supply and Disappearance: Selected Exporters

Million Metric Tons/Hectares

| Country Mktg Year | Area Harvested | Yield | Production | MY Imports | MY Exports | Feed and Residual | Total Consumption | Ending Stocks |
|-------------------|----------------|-------|------------|------------|------------|-------------------|-------------------|---------------|
| Argentina | | | | | | | | |
| 2007/08 | 0.6 | 4.7 | 2.9 | 0.0 | 1.2 | 1.0 | 1.2 | 0.7 |
| 2008/09 | 0.5 | 3.7 | 1.7 | 0.0 | 1.1 | 1.0 | 1.1 | 0.2 |
| 2009/10 | 0.8 | 4.8 | 3.6 | 0.0 | 1.8 | 1.7 | 1.9 | 0.2 |
| 2010/11 | 1.0 | 4.4 | 4.4 | 0.0 | 1.7 | 1.7 | 1.9 | 0.9 |
| 2011/12 | 1.0 | 4.2 | 4.2 | 0.0 | 3.1 | 1.7 | 1.9 | 0.2 |
| 2012/13 | 1.1 | 4.5 | 4.7 | 0.0 | 1.8 | 2.0 | 2.3 | 0.8 |
| 2013/14 | 1.0 | 4.4 | 4.4 | 0.0 | 1.3 | 2.3 | 2.7 | 1.2 |
| 2014/15 | 0.8 | 4.5 | 3.5 | 0.0 | 1.1 | 2.4 | 2.8 | 0.8 |
| 2015/16 | 0.9 | 4.5 | 3.9 | 0.0 | 1.1 | 2.5 | 2.9 | 0.7 |
| Australia | | | | | | | | |
| 2007/08 | 0.9 | 4.0 | 3.8 | 0.0 | 0.8 | 2.2 | 2.2 | 0.8 |
| 2008/09 | 0.8 | 3.5 | 2.7 | 0.0 | 1.0 | 1.8 | 1.8 | 0.7 |
| 2009/10 | 0.5 | 3.0 | 1.5 | 0.0 | 0.3 | 1.2 | 1.2 | 0.7 |
| 2010/11 | 0.6 | 3.1 | 1.9 | 0.0 | 0.9 | 1.4 | 1.4 | 0.4 |
| 2011/12 | 0.7 | 3.4 | 2.2 | 0.0 | 1.3 | 1.1 | 1.1 | 0.2 |
| 2012/13 | 0.6 | 3.4 | 2.2 | 0.0 | 1.2 | 1.1 | 1.1 | 0.2 |
| 2013/14 | 0.5 | 2.4 | 1.3 | 0.0 | 0.4 | 0.9 | 0.9 | 0.2 |
| 2014/15 | 0.7 | 3.2 | 2.1 | 0.0 | 1.7 | 0.5 | 0.5 | 0.1 |
| 2015/16 | 0.7 | 3.1 | 2.2 | 0.0 | 1.0 | 1.2 | 1.2 | 0.1 |

U.S. Grains Supply and Distribution: Wheat, Corn, Sorghum, Barley, Oats, Rye, and Rice

Thousand Metric Tons/Hectares

| | Area Harvested | Yield | Rough Production | Production | Imports | TY Imports | Exports | TY Exports | Feed Dom. Consumption | Domestic Consumption | Ending Stocks |
|---------------------|----------------|-------|------------------|------------|---------|------------|---------|------------|-----------------------|----------------------|---------------|
| Wheat | | | | | | | | | | | |
| 2013/14 | 18,345 | 3 | nr | 58,105 | 4,710 | 4,785 | 32,001 | 31,518 | 6,196 | 34,287 | 16,065 |
| 2014/15 | 18,771 | 3 | nr | 55,147 | 4,068 | 3,987 | 23,249 | 22,752 | 3,278 | 31,554 | 20,477 |
| 2015/16 | 19,058 | 3 | nr | 55,840 | 3,266 | 3,200 | 21,772 | 22,000 | 4,082 | 32,197 | 25,614 |
| Corn | | | | | | | | | | | |
| 2013/14 | 35,390 | 10 | nr | 351,272 | 909 | 727 | 48,783 | 50,684 | 128,023 | 292,965 | 31,292 |
| 2014/15 | 33,644 | 11 | nr | 361,091 | 804 | 809 | 47,359 | 46,773 | 135,014 | 301,854 | 43,974 |
| 2015/16 | 32,678 | 11 | nr | 345,486 | 1,016 | 1,000 | 43,182 | 43,500 | 134,626 | 301,512 | 45,782 |
| Sorghum | | | | | | | | | | | |
| 2013/14 | 2,665 | 4 | nr | 9,966 | 2 | 3 | 5,362 | 5,717 | 2,351 | 4,127 | 864 |
| 2014/15 | 2,590 | 4 | nr | 10,988 | 10 | 27 | 8,965 | 9,249 | 2,043 | 2,429 | 468 |
| 2015/16 | 3,177 | 5 | nr | 15,158 | 127 | 110 | 8,255 | 7,600 | 3,302 | 5,843 | 1,655 |
| Barley | | | | | | | | | | | |
| 2013/14 | 1,230 | 4 | nr | 4,719 | 408 | 522 | 311 | 336 | 1,440 | 4,775 | 1,791 |
| 2014/15 | 1,011 | 4 | nr | 3,953 | 513 | 430 | 312 | 292 | 938 | 4,234 | 1,711 |
| 2015/16 | 1,258 | 4 | nr | 4,666 | 370 | 450 | 261 | 300 | 1,089 | 4,420 | 2,066 |
| Oats | | | | | | | | | | | |
| 2013/14 | 408 | 2 | nr | 938 | 1,674 | 1,866 | 23 | 29 | 1,694 | 2,757 | 359 |
| 2014/15 | 419 | 2 | nr | 1,019 | 1,852 | 1,759 | 26 | 23 | 1,307 | 2,424 | 780 |
| 2015/16 | 516 | 3 | nr | 1,300 | 1,637 | 1,600 | 29 | 30 | 1,710 | 2,828 | 860 |
| Rye | | | | | | | | | | | |
| 2013/14 | 113 | 2 | nr | 194 | 234 | 204 | 7 | 6 | 184 | 424 | 7 |
| 2014/15 | 104 | 2 | nr | 183 | 237 | 262 | 6 | 3 | 164 | 406 | 15 |
| 2015/16 | 146 | 2 | nr | 292 | 216 | 200 | 6 | 5 | 221 | 467 | 50 |
| Rice, Milled | | | | | | | | | | | |
| 2013/14 | 999 | 9 | 8,615 | 6,117 | 734 | 755 | 3,005 | 2,998 | nr | 3,977 | 1,025 |
| 2014/15 | 1,187 | 8 | 10,079 | 7,106 | 783 | 765 | 3,207 | 3,500 | nr | 4,155 | 1,552 |
| 2015/16 | 1,042 | 8 | 8,724 | 6,107 | 762 | 775 | 3,239 | 3,325 | nr | 3,853 | 1,329 |

Notes: Wheat Trade Year (TY) statistics are on July/June years. Barley, corn, sorghum, rye and oats Trade Year (TY) statistics are on Oct/Sept years. Rice Trade Year (TY) statistics are for the subsequent calendar year; 'Imports' and 'Exports' columns contain data on the local marketing year: wheat, barley, oats and rye are June/May; corn and sorghum are Sept/Aug; rice is Aug/July.

Total Wheat and Coarse Grains: Supply and Demand

Millions of Metric Tons/Hectares

| | Area Harvested | Yield | Production | TY Exports | Feed Dom. | Domestic Consumption | Ending Stocks |
|--------------------------------|-----------------------|--------------|-------------------|-------------------|------------------|-----------------------------|----------------------|
| Wheat and Coarse Grains | | | | | | | |
| 1986/87 | 565.2 | 2.4 | 1,347.9 | 174.7 | 645.9 | 1,299.7 | 469.1 |
| 1987/88 | 544.3 | 2.4 | 1,285.9 | 202.2 | 656.6 | 1,329.8 | 422.8 |
| 1988/89 | 541.9 | 2.2 | 1,218.1 | 203.3 | 619.5 | 1,301.8 | 339.1 |
| 1989/90 | 548.2 | 2.4 | 1,327.5 | 208.9 | 644.5 | 1,346.3 | 320.3 |
| 1990/91 | 545.7 | 2.6 | 1,417.6 | 190.1 | 669.8 | 1,369.7 | 368.3 |
| 1991/92 | 543.3 | 2.5 | 1,355.7 | 207.5 | 653.5 | 1,366.1 | 357.9 |
| 1992/93 | 545.9 | 2.6 | 1,431.7 | 205.2 | 664.1 | 1,388.3 | 398.5 |
| 1993/94 | 536.1 | 2.5 | 1,356.6 | 188.2 | 657.1 | 1,389.1 | 366.0 |
| 1994/95 | 534.1 | 2.6 | 1,392.8 | 200.1 | 670.5 | 1,395.6 | 363.2 |
| 1995/96 | 527.2 | 2.5 | 1,338.7 | 187.5 | 641.8 | 1,381.6 | 320.3 |
| 1996/97 | 545.7 | 2.7 | 1,490.2 | 198.3 | 674.6 | 1,441.7 | 368.7 |
| 1997/98 | 535.2 | 2.8 | 1,490.8 | 190.4 | 685.7 | 1,443.4 | 416.1 |
| 1998/99 | 520.2 | 2.8 | 1,481.6 | 198.7 | 685.4 | 1,448.7 | 449.0 |
| 1999/00 | 506.2 | 2.9 | 1,465.8 | 214.0 | 690.0 | 1,470.2 | 444.1 |
| 2000/01 | 509.3 | 2.8 | 1,446.9 | 204.9 | 700.4 | 1,472.3 | 418.7 |
| 2001/02 | 511.7 | 2.9 | 1,480.2 | 208.3 | 713.7 | 1,495.8 | 403.2 |
| 2002/03 | 504.7 | 2.9 | 1,445.1 | 209.2 | 711.7 | 1,506.5 | 341.8 |
| 2003/04 | 511.2 | 2.9 | 1,472.9 | 205.8 | 718.0 | 1,535.5 | 279.1 |
| 2004/05 | 514.8 | 3.2 | 1,642.8 | 214.4 | 756.2 | 1,586.1 | 335.7 |
| 2005/06 | 517.4 | 3.1 | 1,599.9 | 222.5 | 757.5 | 1,617.2 | 318.5 |
| 2006/07 | 519.1 | 3.1 | 1,584.6 | 229.8 | 749.0 | 1,630.1 | 273.0 |
| 2007/08 | 534.6 | 3.2 | 1,692.6 | 244.7 | 763.7 | 1,675.7 | 290.0 |
| 2008/09 | 539.4 | 3.3 | 1,791.6 | 253.6 | 773.7 | 1,722.2 | 359.4 |
| 2009/10 | 533.5 | 3.4 | 1,803.7 | 254.1 | 781.7 | 1,767.7 | 395.4 |
| 2010/11 | 523.4 | 3.3 | 1,747.5 | 250.1 | 772.9 | 1,783.5 | 359.5 |
| 2011/12 | 537.9 | 3.4 | 1,853.2 | 287.1 | 806.8 | 1,853.1 | 359.6 |
| 2012/13 | 532.2 | 3.4 | 1,794.5 | 279.4 | 807.0 | 1,813.7 | 340.4 |
| 2013/14 | 541.5 | 3.7 | 1,996.4 | 327.0 | 859.8 | 1,931.8 | 405.0 |
| 2014/15 | 544.7 | 3.7 | 2,022.9 | 334.5 | 880.9 | 1,972.0 | 455.9 |
| 2015/16 | 545.0 | 3.7 | 1,997.3 | 328.9 | 897.7 | 1,976.4 | 476.8 |

Notes: Wheat and coarse grains trade data are on July/June years through 1975/76. From 1976/77 to the present, coarse grains data are on an Oct/Sept trade year.

World Wheat and Coarse Grains: Supply and Demand

Millions of Metric Tons/Hectares

| | Area Harvested | Yield | Production | TY Exports | Feed Dom. | Domestic Consumpti | Ending Stocks |
|----------------------|----------------|-------|------------|------------|-----------|--------------------|---------------|
| Wheat | | | | | | | |
| 1993/94 | 221.1 | 2.5 | 558.6 | 101.7 | 111.0 | 552.5 | 183.3 |
| 1994/95 | 213.4 | 2.5 | 523.1 | 101.5 | 103.0 | 541.7 | 164.7 |
| 1995/96 | 216.7 | 2.5 | 537.5 | 99.2 | 96.9 | 545.6 | 156.6 |
| 1996/97 | 227.1 | 2.6 | 581.3 | 104.0 | 101.4 | 572.6 | 165.3 |
| 1997/98 | 226.4 | 2.7 | 610.2 | 104.5 | 106.2 | 576.5 | 199.0 |
| 1998/99 | 219.2 | 2.7 | 590.5 | 102.0 | 109.4 | 579.0 | 210.5 |
| 1999/00 | 212.7 | 2.8 | 587.5 | 111.9 | 104.6 | 587.6 | 210.3 |
| 2000/01 | 215.6 | 2.7 | 583.3 | 102.1 | 111.2 | 587.1 | 206.5 |
| 2001/02 | 214.5 | 2.7 | 583.9 | 107.9 | 112.0 | 586.6 | 203.7 |
| 2002/03 | 213.9 | 2.7 | 569.7 | 106.5 | 116.1 | 603.9 | 169.5 |
| 2003/04 | 208.0 | 2.7 | 555.3 | 103.5 | 101.7 | 588.9 | 135.9 |
| 2004/05 | 215.8 | 2.9 | 626.8 | 113.2 | 110.7 | 606.3 | 156.4 |
| 2005/06 | 217.5 | 2.8 | 618.8 | 114.1 | 117.7 | 621.8 | 153.4 |
| 2006/07 | 212.3 | 2.8 | 596.7 | 115.3 | 113.1 | 616.5 | 133.6 |
| 2007/08 | 217.1 | 2.8 | 612.6 | 116.0 | 104.8 | 617.5 | 128.7 |
| 2008/09 | 224.1 | 3.1 | 683.6 | 143.2 | 124.4 | 643.2 | 169.1 |
| 2009/10 | 225.6 | 3.0 | 687.1 | 135.3 | 122.3 | 653.0 | 203.2 |
| 2010/11 | 216.9 | 3.0 | 649.3 | 134.1 | 116.8 | 653.9 | 198.7 |
| 2011/12 | 220.9 | 3.2 | 696.6 | 153.8 | 148.4 | 697.5 | 197.8 |
| 2012/13 | 215.8 | 3.1 | 658.3 | 147.2 | 138.2 | 679.0 | 177.0 |
| 2013/14 | 219.9 | 3.3 | 715.4 | 162.4 | 126.7 | 698.4 | 194.0 |
| 2014/15 | 222.5 | 3.3 | 725.9 | 161.3 | 132.8 | 707.2 | 212.8 |
| 2015/16 | 224.8 | 3.3 | 735.4 | 162.3 | 138.0 | 716.1 | 232.0 |
| Coarse Grains | | | | | | | |
| 1993/94 | 315.0 | 2.5 | 798.0 | 86.5 | 546.1 | 836.6 | 182.7 |
| 1994/95 | 320.8 | 2.7 | 869.7 | 98.6 | 567.6 | 853.9 | 198.5 |
| 1995/96 | 310.5 | 2.6 | 801.2 | 88.3 | 544.9 | 836.0 | 163.7 |
| 1996/97 | 318.6 | 2.9 | 908.9 | 94.3 | 573.3 | 869.1 | 203.5 |
| 1997/98 | 308.8 | 2.9 | 880.6 | 85.8 | 579.5 | 866.9 | 217.1 |
| 1998/99 | 301.0 | 3.0 | 891.1 | 96.7 | 575.9 | 869.7 | 238.6 |
| 1999/00 | 293.6 | 3.0 | 878.4 | 102.1 | 585.4 | 882.6 | 233.8 |
| 2000/01 | 293.7 | 2.9 | 863.6 | 102.8 | 589.3 | 885.2 | 212.3 |
| 2001/02 | 297.2 | 3.0 | 896.3 | 100.4 | 601.6 | 909.1 | 199.5 |
| 2002/03 | 290.9 | 3.0 | 875.4 | 102.7 | 595.6 | 902.6 | 172.3 |
| 2003/04 | 303.2 | 3.0 | 917.5 | 102.3 | 616.3 | 946.7 | 143.1 |
| 2004/05 | 299.0 | 3.4 | 1,016.0 | 101.2 | 645.5 | 979.8 | 179.4 |
| 2005/06 | 299.9 | 3.3 | 981.1 | 108.4 | 639.8 | 995.4 | 165.1 |
| 2006/07 | 306.8 | 3.2 | 988.0 | 114.5 | 635.9 | 1,013.6 | 139.5 |
| 2007/08 | 317.5 | 3.4 | 1,080.0 | 128.7 | 659.0 | 1,058.2 | 161.3 |
| 2008/09 | 315.3 | 3.5 | 1,107.9 | 110.4 | 649.3 | 1,078.9 | 190.3 |
| 2009/10 | 307.9 | 3.6 | 1,116.7 | 118.8 | 659.4 | 1,114.8 | 192.2 |
| 2010/11 | 306.5 | 3.6 | 1,098.2 | 116.0 | 656.1 | 1,129.6 | 160.8 |
| 2011/12 | 317.0 | 3.6 | 1,156.6 | 133.4 | 658.4 | 1,155.6 | 161.8 |
| 2012/13 | 316.5 | 3.6 | 1,136.2 | 132.2 | 668.8 | 1,134.6 | 163.4 |
| 2013/14 | 321.6 | 4.0 | 1,281.1 | 164.6 | 733.2 | 1,233.5 | 211.0 |
| 2014/15 | 322.2 | 4.0 | 1,297.0 | 173.2 | 748.1 | 1,264.9 | 243.1 |
| 2015/16 | 320.2 | 3.9 | 1,261.9 | 166.5 | 759.8 | 1,260.3 | 244.8 |

Notes: Wheat and coarse grains trade data are on July/June years through 1975/76. From 1976/77 to the present, coarse grains data are on an Oct/Sept trade year.

World Corn and Barley: Supply and Demand

Millions of Metric Tons/Hectares

| | Area Harvested | Yield | Production | TY Exports | Feed Dom. | Domestic Consumpti | Ending Stocks |
|---------------|----------------|-------|------------|------------|-----------|--------------------|---------------|
| Corn | | | | | | | |
| 1993/94 | 130.8 | 3.6 | 476.0 | 57.4 | 342.0 | 509.3 | 129.4 |
| 1994/95 | 135.2 | 4.1 | 559.4 | 71.9 | 371.6 | 535.5 | 153.3 |
| 1995/96 | 135.0 | 3.8 | 516.5 | 64.8 | 365.3 | 536.6 | 133.3 |
| 1996/97 | 141.5 | 4.2 | 593.0 | 66.6 | 387.9 | 560.0 | 166.3 |
| 1997/98 | 136.3 | 4.2 | 574.4 | 63.1 | 400.6 | 573.5 | 167.2 |
| 1998/99 | 139.0 | 4.4 | 606.1 | 68.7 | 404.4 | 582.0 | 191.4 |
| 1999/00 | 138.9 | 4.4 | 608.4 | 72.0 | 422.6 | 605.3 | 194.4 |
| 2000/01 | 137.1 | 4.3 | 591.8 | 75.9 | 427.4 | 610.9 | 175.3 |
| 2001/02 | 137.1 | 4.4 | 601.8 | 72.7 | 436.4 | 625.6 | 151.5 |
| 2002/03 | 137.8 | 4.4 | 603.9 | 76.8 | 433.4 | 628.6 | 126.8 |
| 2003/04 | 141.6 | 4.4 | 627.5 | 79.0 | 445.8 | 649.7 | 104.6 |
| 2004/05 | 145.3 | 4.9 | 716.9 | 76.0 | 476.0 | 690.4 | 131.1 |
| 2005/06 | 145.4 | 4.8 | 700.7 | 82.5 | 478.9 | 708.3 | 123.5 |
| 2006/07 | 150.5 | 4.8 | 716.3 | 91.3 | 479.7 | 730.9 | 108.9 |
| 2007/08 | 160.2 | 5.0 | 795.5 | 98.2 | 500.6 | 776.5 | 127.9 |
| 2008/09 | 158.7 | 5.0 | 799.8 | 83.6 | 481.4 | 784.4 | 143.3 |
| 2009/10 | 158.3 | 5.2 | 824.8 | 92.7 | 492.3 | 827.8 | 140.3 |
| 2010/11 | 164.5 | 5.1 | 835.5 | 91.7 | 502.8 | 852.8 | 123.1 |
| 2011/12 | 172.2 | 5.2 | 889.8 | 103.7 | 507.8 | 885.1 | 127.8 |
| 2012/13 | 177.5 | 4.9 | 869.5 | 100.5 | 518.3 | 864.7 | 132.6 |
| 2013/14 | 181.2 | 5.5 | 991.4 | 130.2 | 570.3 | 949.4 | 174.6 |
| 2014/15 | 178.6 | 5.6 | 1,008.5 | 127.8 | 582.2 | 975.9 | 207.2 |
| 2015/16 | 176.8 | 5.5 | 967.9 | 128.3 | 594.8 | 966.2 | 208.9 |
| Barley | | | | | | | |
| 1993/94 | 73.2 | 2.3 | 169.0 | 18.8 | 123.8 | 169.1 | 34.9 |
| 1994/95 | 72.2 | 2.2 | 160.7 | 15.3 | 120.9 | 165.6 | 30.0 |
| 1995/96 | 66.4 | 2.1 | 141.2 | 13.4 | 107.8 | 150.7 | 20.5 |
| 1996/97 | 64.3 | 2.4 | 153.2 | 17.9 | 106.3 | 149.5 | 24.1 |
| 1997/98 | 63.8 | 2.4 | 153.9 | 12.8 | 104.1 | 145.8 | 32.2 |
| 1998/99 | 56.7 | 2.4 | 136.0 | 17.8 | 99.5 | 139.3 | 29.0 |
| 1999/00 | 52.1 | 2.4 | 127.4 | 17.8 | 94.0 | 132.5 | 23.9 |
| 2000/01 | 52.9 | 2.5 | 133.0 | 16.3 | 94.6 | 134.3 | 22.6 |
| 2001/02 | 55.7 | 2.6 | 143.4 | 17.2 | 95.5 | 136.8 | 29.2 |
| 2002/03 | 54.7 | 2.5 | 134.3 | 16.3 | 94.7 | 135.9 | 27.6 |
| 2003/04 | 58.4 | 2.4 | 142.7 | 14.8 | 103.1 | 146.8 | 23.5 |
| 2004/05 | 57.4 | 2.7 | 152.1 | 17.0 | 100.0 | 142.5 | 33.1 |
| 2005/06 | 55.2 | 2.5 | 136.2 | 17.4 | 97.3 | 141.0 | 28.3 |
| 2006/07 | 56.3 | 2.4 | 136.8 | 14.6 | 98.4 | 143.6 | 21.5 |
| 2007/08 | 55.7 | 2.4 | 132.7 | 18.5 | 91.0 | 133.7 | 20.6 |
| 2008/09 | 55.0 | 2.8 | 154.9 | 18.2 | 100.4 | 143.8 | 31.6 |
| 2009/10 | 54.2 | 2.8 | 151.0 | 17.3 | 101.4 | 145.1 | 37.4 |
| 2010/11 | 47.1 | 2.6 | 123.0 | 15.2 | 91.3 | 136.1 | 24.3 |
| 2011/12 | 49.2 | 2.7 | 133.4 | 21.4 | 91.7 | 135.0 | 22.7 |
| 2012/13 | 49.9 | 2.6 | 128.8 | 22.1 | 88.6 | 131.1 | 20.4 |
| 2013/14 | 50.5 | 2.9 | 144.4 | 23.8 | 97.2 | 140.8 | 24.0 |
| 2014/15 | 49.6 | 2.8 | 141.2 | 30.1 | 96.4 | 140.6 | 24.6 |
| 2015/16 | 49.8 | 2.9 | 145.8 | 25.4 | 97.9 | 146.2 | 24.2 |

Notes: Coarse grains trade data are on July/June years through 1975/76. From 1976/77 to the present, coarse grains data are on an Oct/Sept trade year.

World Rice: Supply and Demand

Millions of Metric Tons/Hectares

| | Area Harvested | Yield | Rough Production | Production | TY Exports | Domestic Consumption | Ending Stocks |
|---------------------|----------------|-------|------------------|------------|------------|----------------------|---------------|
| Rice, Milled | | | | | | | |
| 1986/87 | 144.8 | 3.2 | 464.6 | 316.1 | 12.9 | 310.4 | 103.3 |
| 1987/88 | 141.4 | 3.3 | 464.8 | 315.1 | 11.4 | 313.1 | 105.3 |
| 1988/89 | 146.6 | 3.3 | 490.8 | 332.1 | 14.0 | 325.7 | 111.7 |
| 1989/90 | 147.8 | 3.5 | 510.4 | 345.3 | 11.7 | 336.3 | 120.6 |
| 1990/91 | 147.0 | 3.5 | 519.4 | 351.4 | 12.3 | 345.3 | 126.7 |
| 1991/92 | 147.5 | 3.5 | 522.8 | 353.2 | 14.4 | 353.2 | 126.7 |
| 1992/93 | 146.5 | 3.6 | 524.2 | 354.0 | 14.9 | 357.5 | 123.2 |
| 1993/94 | 145.3 | 3.6 | 526.1 | 354.7 | 16.6 | 358.9 | 119.0 |
| 1994/95 | 147.3 | 3.7 | 540.0 | 364.1 | 20.8 | 365.5 | 117.6 |
| 1995/96 | 148.4 | 3.7 | 547.3 | 368.8 | 19.7 | 368.3 | 118.1 |
| 1996/97 | 150.1 | 3.8 | 565.3 | 381.4 | 18.9 | 379.2 | 120.3 |
| 1997/98 | 151.7 | 3.8 | 575.2 | 387.4 | 27.6 | 380.0 | 127.7 |
| 1998/99 | 153.1 | 3.8 | 587.0 | 394.9 | 24.8 | 388.7 | 134.0 |
| 1999/00 | 155.9 | 3.9 | 608.8 | 409.3 | 22.8 | 400.3 | 143.1 |
| 2000/01 | 152.4 | 3.9 | 594.1 | 399.3 | 24.3 | 395.6 | 146.7 |
| 2001/02 | 151.3 | 3.9 | 594.3 | 399.5 | 27.9 | 413.3 | 132.9 |
| 2002/03 | 146.9 | 3.8 | 563.1 | 378.2 | 27.6 | 408.1 | 103.0 |
| 2003/04 | 149.3 | 3.9 | 585.4 | 392.5 | 27.3 | 413.8 | 81.7 |
| 2004/05 | 151.8 | 3.9 | 596.4 | 400.8 | 28.9 | 408.5 | 74.0 |
| 2005/06 | 153.9 | 4.0 | 622.2 | 417.8 | 29.0 | 415.4 | 76.5 |
| 2006/07 | 154.5 | 4.0 | 625.0 | 420.1 | 31.8 | 421.2 | 75.4 |
| 2007/08 | 154.8 | 4.2 | 643.5 | 433.6 | 29.5 | 428.1 | 80.9 |
| 2008/09 | 158.2 | 4.2 | 668.7 | 449.4 | 29.4 | 437.6 | 92.7 |
| 2009/10 | 155.8 | 4.2 | 656.2 | 440.7 | 31.8 | 438.4 | 95.0 |
| 2010/11 | 158.4 | 4.2 | 672.1 | 450.4 | 36.5 | 445.3 | 100.0 |
| 2011/12 | 160.7 | 4.3 | 697.2 | 467.6 | 39.9 | 460.9 | 106.8 |
| 2012/13 | 158.5 | 4.4 | 704.5 | 472.5 | 39.5 | 468.8 | 110.5 |
| 2013/14 | 161.7 | 4.4 | 713.6 | 478.5 | 43.4 | 481.6 | 107.5 |
| 2014/15 | 160.0 | 4.5 | 713.0 | 478.3 | 42.0 | 481.9 | 103.9 |
| 2015/16 | 158.9 | 4.4 | 700.8 | 470.1 | 42.1 | 484.3 | 89.7 |

Notes: Stocks, exports and consumption are expressed on a milled basis in marketing years.

ENDNOTES TO GRAIN: WORLD MARKETS AND TRADE

REGIONAL TABLES

North America: Canada, Mexico, the United States.

Central America: Belize, Costa Rica, El Salvador, Guatemala, Honduras, Nicaragua, Panama.

Caribbean: Anguilla, Antigua and Barbuda, Aruba, Bahamas, Barbados, Bermuda, British Virgin Islands, Cayman Islands, Cuba, Dominica, Dominican Republic, French West Indies, Grenada, Guadeloupe, Haiti, Jamaica and Dep, Leeward-Windward Islands, Martinique, Montserrat, Netherlands Antilles, Puerto Rico, Kitts and Nevis, St. Lucia, St. Vincent and the Grenadines, Trinidad and Tobago, Turks and Caicos Islands, Virgin Islands of the U.S.

South America: Argentina, Bolivia, Brazil, Chile, Colombia, Ecuador, Falkland Islands (Islas Malvinas), French Guiana, Guyana, Paraguay, Peru, Suriname, Uruguay, Venezuela.

EU: Austria, Belgium/Luxembourg, Bulgaria, Croatia, Cyprus, Czech Republic, Denmark, Estonia, Finland, France, Germany, Greece, Hungary, Ireland, Italy, Latvia, Lithuania, Malta, Netherlands, Poland, Portugal, Romania, Slovakia, Slovenia, Spain, Sweden, United Kingdom.

Other Europe: Albania, Azores, Bosnia and Herzegovina, Former Yugoslavia, Gibraltar, Iceland, Macedonia, Montenegro, Norway, Serbia, Switzerland.

Former Soviet Union: Armenia, Azerbaijan, Belarus, Georgia, Kazakhstan, Kyrgyzstan, Moldova, Russia, Tajikistan, Turkmenistan, Ukraine, Uzbekistan.

Middle East: Bahrain, Iran, Iraq, Israel, Jordan, Kuwait, Lebanon, Oman, Qatar, Saudi Arabia, Syria, Turkey, United Arab Emirates, Yemen.

North Africa: Algeria, Egypt, Libya, Morocco, Tunisia.

Sub-Saharan Africa: all African countries except North Africa.

East Asia: China, Hong Kong, Japan, South Korea, North Korea, Macau, Mongolia, Taiwan.

South Asia: Afghanistan, Bangladesh, Bhutan, India, Nepal, Pakistan, Sri Lanka, Maldives.

Southeast Asia: Brunei, Burma, Cambodia, Indonesia, Laos, Malaysia, Philippines, Singapore, Thailand, Vietnam.

Oceania: Australia, Fiji, New Zealand, Papua New Guinea.

OTHER NOTES

Local Marketing Years (LMY): LMY refers to the 12-month period at the onset of the main harvest, when the crop is marketed (i.e., consumed, traded, or stored). The year first listed begins a country's LMY for that commodity (2015/16 starts in 2015); except for summer grains in certain Southern Hemisphere countries and for rice in selected countries, where the second year begins the LMY (2015/16 starts in 2016). Key exporter LMY's are:

| Wheat | Corn | Barley | Sorghum |
|--------------------------|-------------------------|--------------------------|-------------------------|
| Argentina (Dec/Nov) | Argentina (Mar/Feb) | Australia (Nov/Oct) | Argentina (Mar/Feb) |
| Australia (Oct/Sep) | Brazil (Mar/Feb) | Canada (Aug/Jul) | Australia (Mar/Feb) |
| Canada (Aug/Jul) | China (Oct/Sep) | European Union (Jul/Jun) | United States (Sep/Aug) |
| China (Jul/Jun) | South Africa (May/Apr) | Russia (Jul/Jun) | |
| European Union (Jul/Jun) | United States (Sep/Aug) | Ukraine (Jul/Jun) | |
| India (Apr/Mar) | | United States (Jun/May) | |
| Kazakhstan (Jul/Jun) | | | |
| Russia (Jul/Jun) | | | |
| Turkey (Jun/May) | | | |
| Ukraine (Jul/Jun) | | | |
| United States (Jun/May) | | | |

For a complete list of local marketing years, please see the FAS website (<http://www.fas.usda.gov/psdonline/psdAvailability.aspx>).

Stocks: Unless otherwise stated, stock data are based on an aggregate of differing local marketing years and should not be construed as representing world stock levels at a fixed point in time.

Consumption: World totals for consumption reflect total utilization, including food, seed, industrial, feed, and waste; as well as differences in local marketing year imports and local marketing year exports. Consumption statistics for regions and individual countries, however, reflect food, seed, industrial, feed, and waste only.

Trade: All PSD tables are balanced on the different local marketing years. All trade tables contain Trade Year (TY) data which puts all countries on a uniform, 12-month period for analytical comparisons: wheat is July/June; coarse grains, corn, barley, sorghum, oats, and rye are Oct/Sept; and rice is calendar year.

EU Consolidation: The trade figures starting from 1999/00 represent the European Union (Croatia plus the former EU-27) and exclude all intra-trade. For the years 1960/61 through 1998/99, figures are the EU-15 and also exclude all intra-trade. EU-15 member states' data for grains are no longer maintained in the official USDA database. Data for the individual NMS-10, plus Bulgaria, Romania, and Croatia, exists only prior to 1999/00.

Statistics: (1) Wheat trade statistics include wheat, flour, and selected pasta products on a grain equivalent basis. (2) Rice trade statistics include rough, brown, milled, and broken on a milled equivalent basis. (3) Coarse grains statistics include corn, barley, sorghum, oats, rye, millet, and mixed grains but exclude trade in barley malt, millet, and mixed grains.

Unaccounted: This term includes grain in transit, reporting discrepancies in some countries, and trade to countries outside the USDA database.

The Global Commodity Analysis Division, Office of Global Analysis, Foreign Agricultural Service, USDA, Washington, DC 20250, prepared this circular. Information is gathered from official statistics of foreign governments and other foreign source materials, reports of U.S. agricultural attachés and Foreign Service officers, office research, and related information. Further information may be obtained by writing the Division or telephoning (202) 720-3448.

Note: The previous report in this series was Grain: World Markets and Trade December 2015. For further details on world grain production, please see World Agricultural Production January 2016.

This circular is available in its entirety on the Internet via the Foreign Agricultural Service Home Page. The address is: <http://www.fas.usda.gov>

Questions may be directed to the following staff:

| | | | |
|------------------|----------------|--|---------------|
| Teresa McKeivier | (202) 690-1151 | Teresa.McKeivier@fas.usda.gov | Wheat |
| Daniel Archibald | (202) 720-9432 | Dan.Archibald@fas.usda.gov | Wheat |
| Rachel Trego | (202) 720-1073 | Rachel.Trego@fas.usda.gov | Rice |
| Kyle Bonsu | (202) 260-8370 | Kyle.Bonsu@fas.usda.gov | Rice |
| Yoonhee Macke | (202) 690-4199 | Yoonhee.Macke@fas.usda.gov | Coarse Grains |
| Barrett Bumpas | (202) 692-0337 | Barrett.Bumpas@fas.usda.gov | Coarse Grains |
| Andrew Sowell | (202) 720-0262 | Andrew.Sowell@fas.usda.gov | Coarse Grains |